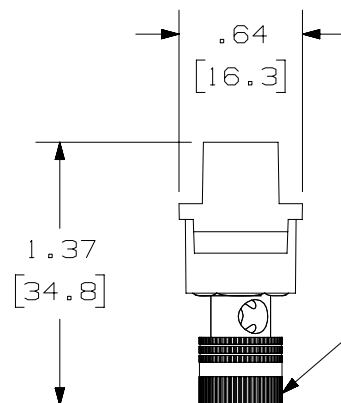
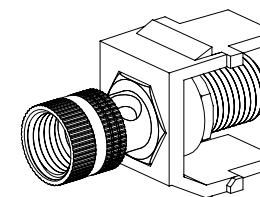
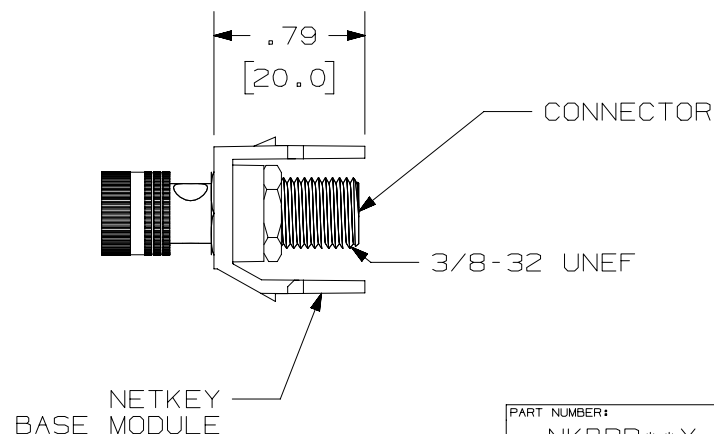
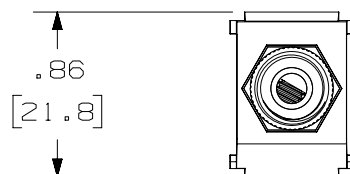


THIS COPY IS PROVIDED ON A RESTRICTED BASIS AND IS NOT TO BE USED IN ANY WAY DETRIMENTAL TO THE INTERESTS OF PANDUIT CORP.



KNURLED NUT WITH
COLOR BAND



PANDUIT P/N

WEIGHT

NKBPR**Y

.25 LB/10 PCS
(115.2 g/10 PCS)

NKBPB**Y


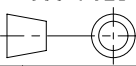
.25 LB/10 PCS
(115.2 g/10 PCS)

NOTES:

1. SEE CURRENT CATALOG FOR ADDITIONAL PART NUMBER SUFFIXES TO INDICATE COLOR AND OR PACKAGE QUANTITY.
2. SEE CATALOG FOR COMPLETE LIST OF PARTS APPLICABLE FOR USE WITH THIS PART.
3. DIMENSIONS IN PARENTHESES ARE IN METRIC.

PART NUMBER: NKBPR**Y, NKBPB**Y	PRODUCT SPECIFICATION NUMBER: NA
FMEA/CONTROL PLAN NUMBER: NA	PACKAGING INSTRUCTION NUMBER: NA
INSPECTION INSTRUCTION NUMBER: NA	WORK INSTRUCTION NUMBER: NA

TITLE NETKEY 5-WAY BINDING POST MODULE CUSTOMER DRAWING

ITEM REVISION NAME M00741A0/01					
DATASET FILE NAME M00741A0_DC73/01A					
UNLESS OTHERWISE SPECIFIED, DIMENSIONAL TOLERANCES ARE: IN [mm] .x ± .1 [2.54] .xxx ± .005 [.127] .xx ± .01 [.25] ANGLES ± 5 °  THIRD ANGLE PROJECTION				MATERIAL: CONNECTOR - GOLD PLATED BRASS NETKEY MODULE - ABS	
				DRAWING NUMBER: 00741 - 73	
DRAWN BY JSP	DATE 10-2-01	CHK MJD	SCALE FULL	SHT 1 OF 1	SIZE A

REV	DATE	BY	CHK	APR	DESCRIPTION	ECN
1	5-12-17	MDJR	NAGL	AMY	A. UPDATED ASSEMBLY MODEL VIEWS AND TITLE BLOCK	00741-73
R	10-2-01	JSP	MJD	MJD	RELEASED TO PRODUCTION	00741-73