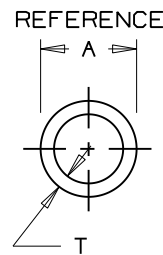
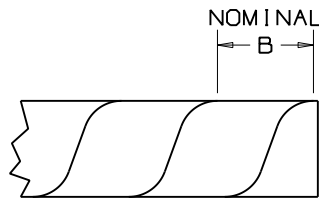


THIS COPY IS PROVIDED ON A RESTRICTED BASIS AND IS NOT TO BE USED IN ANY WAY DETRIMENTAL TO THE INTERESTS OF PANDUIT CORP.

*PANDUIT PART NUMBER	A IN (mm)	B IN (mm)	T IN (mm)	WEIGHT LBS (g) / 100 FT
T12N	.125 (3.2)	.218±.047 (5.5±1.2)	.015±.004 (0.4±0.1)	0.3 (136.1)
T19N	.188 (4.8)	.250±.047 (6.4±1.2)	.020±.008 (0.5±0.2)	0.6 (250.0)
T25N	.250 (6.4)	.375±.047 (9.5±1.2)	.023±.008 (0.6±0.2)	0.8 (362.9)
T38N	.375 (9.5)	.437±.047 (11.1±1.2)	.030±.010 (0.8±0.3)	1.5 (680.4)
T50N	.500 (12.7)	.500±.047 (12.7±1.2)	.032±.012 (0.8±0.3)	2.3 (1043.3)
T62N	.625 (15.9)	.625±.047 (15.9±1.2)	.035±.020 (0.9±0.5)	3.1 (1406.1)
T75N	.750 (19.1)	.875±.047 (22.2±1.2)	.040±.020 (1.0±0.5)	4.2 (1905.1)
T100N	1.000 (25.4)	1.125±.047 (28.6±1.2)	.045±.020 (1.1±0.5)	6.2 (2800.0)



- \* Notes:
- 1) See current price sheet for part number suffix designations, package size and part color.
  - 2) For roll sizes larger than 10 ft., splicing may occur.
  - 3) Reverse Cut.

DIMENSIONS IN PARENTHESES ARE IN METRIC UNITS  
 CAD FILENAME/LAYERS G03597BG\_DC\_G00239BN\_PB\_NYLONWRAP\_04/00A

**PANDUIT** CORP. TINLEY PARK, ILLINOIS

(NATURAL) SPIRAL WRAP

UNLESS OTHERWISE SPECIFIED, DIMENSIONAL TOLERANCES ARE:  
 (.X) ± ---- (.XXX) ± ----  
 (.XX) ± ---- ANGLES ± ----

UNLESS OTHERWISE SPECIFIED, ALL DIMENSIONS ARE GIVEN IN INCHES, THIRD ANGLE PROJECTION.

REV	DATE	BY	CHK	DESCRIPTION	ECN	R	CUST	SUP
4	5/10/11	LEF	VJS	A REMOVED REF. TO PHONE NUMBERS IN NOTE 2 B ADDED NOTE 3 REVERSE CUT	GB0239BN	4	RAMI	
3	6-24-97	JAD		ADDED NOTE 2	GB0239BN	3		
2	1-20-97	RJK		ADDED T19N TO DRAWING	GB0239BN	2		
1	6-5-96	CJG		REMOVED TOLERANCES FROM DIM. 'A'	GB0239BN	1		
R	5-11-93	SJSU		INITIAL RELEASE	GB0239BN	R		

DRAWN BY  
SJSU  
DATE  
5-11-93  
CHK'D  
JVL

MAT'L:  
NYLON 6/6

SCALE NONE  
DRAWING NO. GB0239BN  
DWG SIZE A