

2

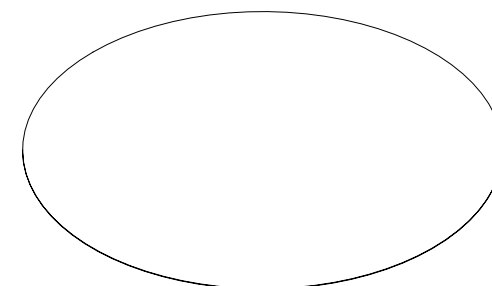
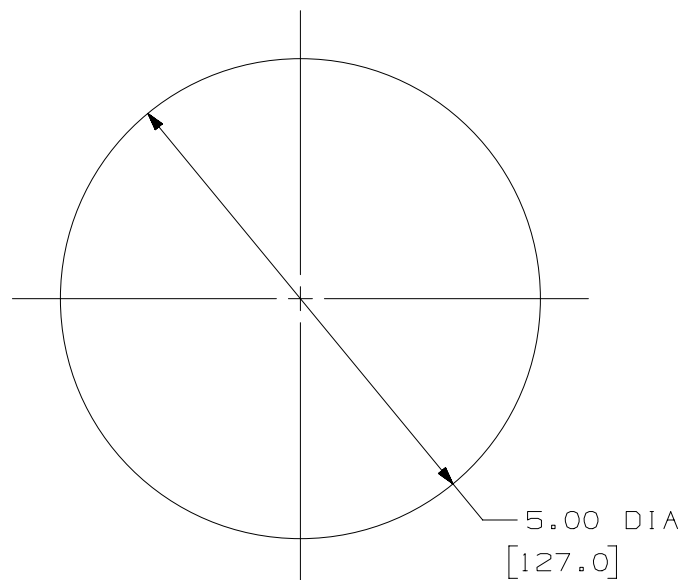
1

THIS COPY IS PROVIDED ON A RESTRICTED BASIS AND IS NOT TO BE USED IN ANY WAY DETRIMENTAL TO THE INTERESTS OF PANDUIT CORP.

PANDUIT PART NUMBER	WEIGHT
FLCFPLF - X	0.04 LB./PACKAGE 18.0 GRAMS/PACKAGE

## NOTES:

1. SEE CURRENT CATALOG FOR ADDITIONAL PART NUMBER SUFFIXES TO INDICATE PACKAGE QUANTITIES.
2. STANDARD PACKAGE QUANTITY:  
10 SHEETS PER PACKAGE
3. PROPER USE OF THIS FILM WILL PROVIDE THE REQUIRED END FACE POLISH FOR SINGLEMODE TYPE CONNECTORS.
4. POLISHING FILM CONSISTS OF A LAPPING MEDIA BONDED TO A MYLAR BACKING.
5. ALL DIMENSIONS IN [ ] ARE METRIC.



PART NUMBER		FLCFPLF - X	
TITLE			
FINAL POLISH LAPPING FILM			
CUSTOMER DRAWING			
ITEM REVISION NAME		M01575BD/00	
DATASET FILE NAME		M01575BD_DC/00E	
UNLESS OTHERWISE SPECIFIED, DIMENSIONAL TOLERANCES ARE: IN ( mm )		MATERIAL:	
.X ± .XX ±		.XXX ± ANGLES ±	
THIRD ANGLE PROJECTION		DRAWING NUMBER: 01575-05	
DRAWN BY EFK	DATE 10-21-03	CHK RTFI	SCALE NONE
SHT 1 OF 1			SIZE A

2

1

4	5/19/15	JSP	WJM	RWB	A. REVISED DRAWING TITLE BLOCK.	01575-05
REV	DATE	BY	CHK	APR	DESCRIPTION	ECN

B

A



B

A



B

A



B

A



B

A



B

A



B

A



B

A



B

A



B

A



B

A



B

A



B

A



B

A



B

A



B

A



B

A



B

A



B

A



B

A



B

A



B

A



B

A



B

A



B

A



B

A



B

A



B

A



B

A



B

A



B

A



B

A



B

A



B

A



B

A



B

A



B

A



B

A



B

A



B

A



B

A



B

A



B

A



B

A



B

A



B

A



B

A



B

A



B

A



B

A



B

A



B

A



B

A



B

A



B

A



B

A



B

A



B

A



B

A



B

A



B

A



B

A



B

A



B

A



B

A



B

A



B

A



B

A



B

A



B

A



B

A



B

A



B

A



B

A



B

A



B

A



B

A



B

A



B

A



B

A



B

A



B

A



B

A



B

A



B

A



B

A



B

A