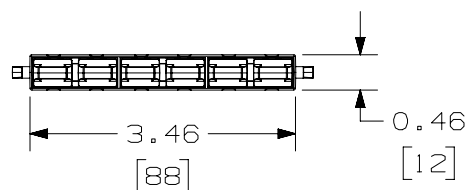
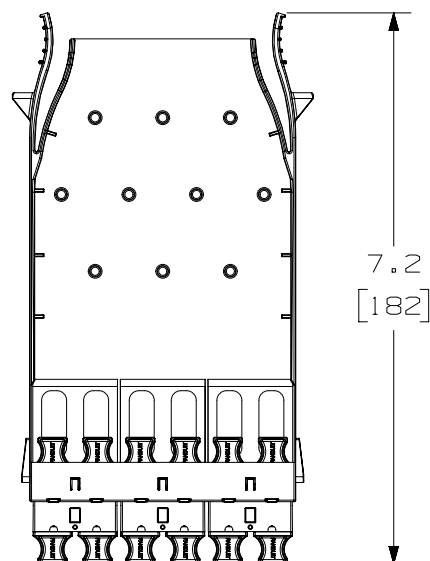
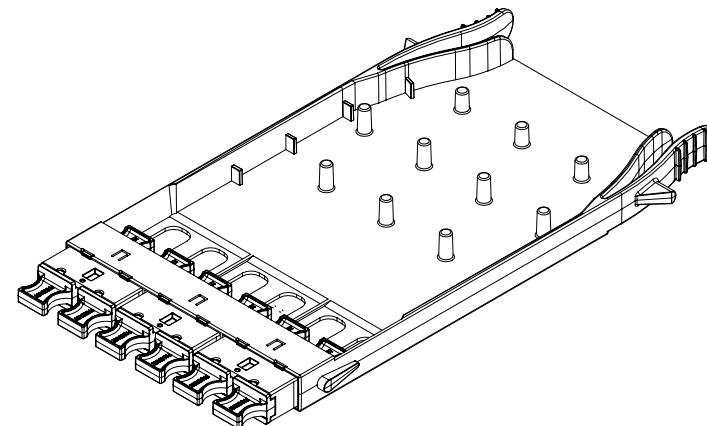


THIS COPY IS PROVIDED ON A RESTRICTED BASIS AND IS NOT TO BE USED IN ANY WAY DETRIMENTAL TO THE INTERESTS OF PANDUIT CORP.

NOTES:

1. SEE CURRENT CATALOG FOR PART NUMBER SUFFIXES TO INDICATE COLOR AND/OR PACKAGE QUANTITIES.
2. SEE CATALOG FOR COMPLETE LIST OF PARTS APPLICABLE FOR USE WITH THIS PRODUCT.
3. PART NUMBERS:SEE TABLE
4. MATERIALS:
A. FIBER ADAPTER PANEL: PLASTIC
B. ADAPTER: COMPOSITE PLASTIC
5. FIBER ADAPTER PANEL WEIGHT: 3.53oz [100g]
6. DIMENSIONS IN BRACKETS ARE METRIC.

**FRONT VIEW****HD FLEX FIBER ADAPTER PANEL 6-PORT MPO CASSETTE**

PART NUMBER	DISCRIPTION	ADAPTER COLOR
FHMP-6-ABL	DUPLEX MPO ADAPTER (KEY UP/KEY DOWN)	BLACK
FHMP-6-BCG	DUPLEX MPO ADAPTER (KEY UP/KEY UP)	GREY
FHMP-6-ARD	DUPLEX MPO ADAPTER (KEY UP/KEY DOWN)	RED

TITLE

HD FLEX FIBER ADAPTER PANEL 6-PORT
MPO CASSETTE

CUSTOMER DRAWING

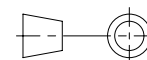
ITEM REVISION NAME

12F187HP/00

DATASET FILE NAME

12F187HP_DC/00A

ALL DIMENSIONS ARE FOR REFERENCE



THIRD ANGLE
PROJECTION

MATERIAL:

SEE NOTES

DRAWING NUMBER:

12F187HP-DC

DRAWN BY

SAT

DATE

01-12-15

CHK

JESA

SCALE

NONE

SHT 1 OF 1

SIZE

A

00	01-15-15	SAT	JESA	RAR	RELEASED TO PRODUCTION	12F187HP-DC
REV	DATE	BY	CHK	APR	DESCRIPTION	ECN