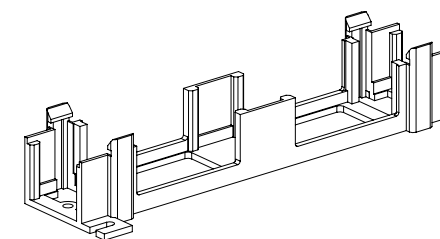
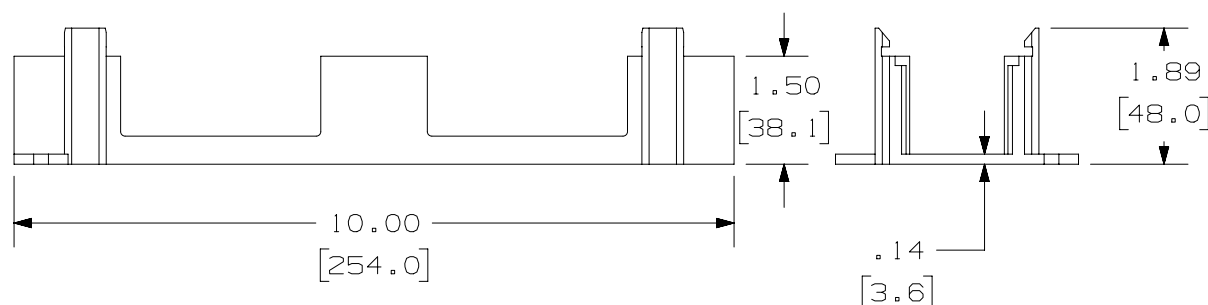
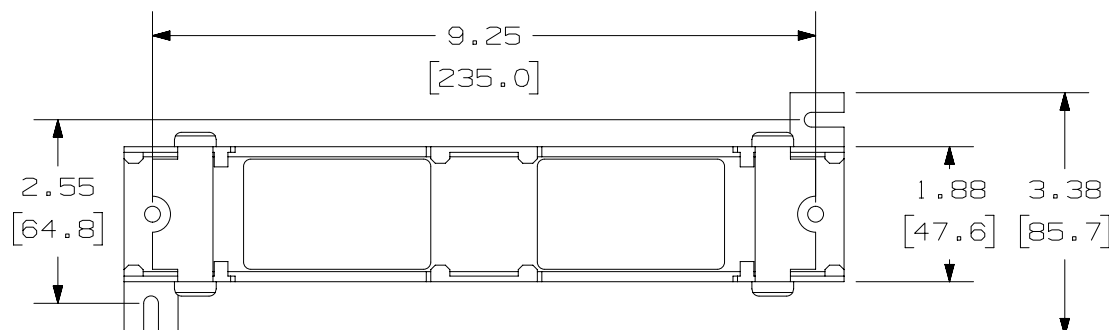



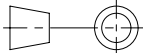
THIS COPY IS PROVIDED ON A RESTRICTED BASIS AND IS NOT TO BE USED IN ANY WAY DETRIMENTAL TO THE INTERESTS OF PANDUIT CORP.

PANDUIT P/N	WEIGHT
WB89D	1.6 LB/10 PCS (725g/10 PCS)

NOTES :

1. SEE CURRENT CATALOG FOR ADDITIONAL PART NUMBER SUFFIXES TO INDICATE COLOR AND OR PACKAGE QUANTITY.
2. SEE CATALOG FOR COMPLETE LIST OF PARTS APPLICABLE FOR USE WITH THIS PART.
3. DIMENSIONS IN [] ARE IN METRIC.



PART NUMBER		WB89D	
TITLE			
89D MOUNTING BRACKET			
CUSTOMER DRAWING			
ITEM REVISION NAME			
D35543BD/01			
DATASET FILE NAME			
D35543BD_DC/01C			
UNLESS OTHERWISE SPECIFIED, DIMENSIONAL TOLERANCES ARE: IN [mm] .X ± .XXX ± .010 [.3] .XX ± .03 [.8] 		MATERIAL : THERMOPLASTIC	
THIRD ANGLE PROJECTION		DRAWING NUMBER: 35543-04	
DRAWN BY	DATE	CHK	SIZE
DW	3-19-96	CEF	A
		SCALE	
		NONE	
		SHT 1 OF 1	

4	5/21/14	JSP	REFR	MMR	REVISED AND REDRAWN, PREVIOUS REVISIONS HAVE BEEN OMITTED.	35543-04
REV	DATE	BY	CHK	APR	DESCRIPTION	ECN