

2

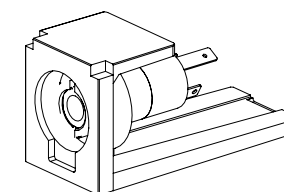
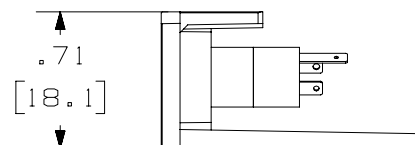
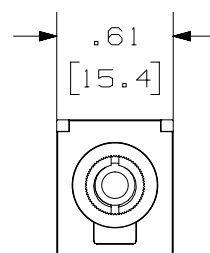
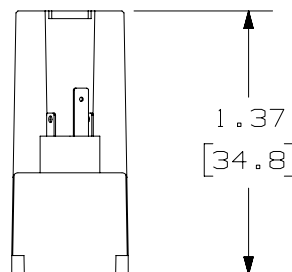
1

THIS COPY IS PROVIDED ON A RESTRICTED BASIS AND IS NOT TO BE USED IN ANY WAY DETRIMENTAL TO THE INTERESTS OF PANDUIT CORP.

PANDUIT P/N	WEIGHT
CM35MSS**	.09 LB/10 PCS (42.5 g/10 PCS)

NOTES:

1. SEE CURRENT CATALOG FOR ADDITIONAL PART NUMBER SUFFIXES TO INDICATE COLOR AND OR PACKAGE QUANTITY.
2. SEE CATALOG FOR COMPLETE LIST OF PARTS APPLICABLE FOR USE WITH THIS PART.
3. DIMENSIONS IN [ ] ARE IN METRIC.
4. PART INCLUDES:  
1- MODULE BASE  
1- 3.5mm (1/8") SOLDER TYPE CONNECTOR  
(ASSEMBLED TO MODULE BASE)



PART NUMBER		CM35MSS**	
TITLE			
MINI-COM 3.5mm(1/8") HEAD PHONE JACK MODULE SOLDER TYPE			
CUSTOMER DRAWING			
ITEM REVISION NAME		M01611AA/00	
DATASET FILE NAME		M01611AA_DC/00B	
UNLESS OTHERWISE SPECIFIED, DIMENSIONAL TOLERANCES ARE: IN [ mm ]		PANDUIT	
.X ± .03 [ .8 ]		MATERIAL:	
.XXX ± .010 [ .3 ]		MODULE: ABS	
ANGLES ±		CONNECTOR: PBT	
THIRD ANGLE PROJECTION		DRAWING NUMBER:	
DRAWN BY		02479-185	
DATE		SHT 1 OF 1	
CHK		SIZE	
MJD		A	
SCALE			
NONE			

2	5/21/14	JSP	REFR	MMR	REVISED AND REDRAWN, PREVIOUS REVISIONS HAVE BEEN OMITTED.	02479-185
REV	DATE	BY	CHK	APR	DESCRIPTION	ECN

2

1

B

A



B

A



B

A



B

A



B

A



B

A



B

A



B

A



B

A



B

A



B

A



B

A



B

A



B

A



B

A



B

A



B

A



B

A



B

A



B

A



B

A



B

A



B

A



B

A



B

A



B

A



B

A



B

A



B

A



B

A



B

A



B

A



B

A



B

A



B

A



B

A



B

A



B

A



B

A



B

A



B

A



B

A



B

A



B

A



B

A



B

A



B

A



B

A



B

A



B

A



B

A



B

A



B

A



B

A



B

A



B

A



B

A



B

A



B

A



B

A



B

A



B

A



B

A



B

A



B

A



B

A



B

A



B

A



B

A



B

A



B

A

