

Panduit Pre-Configured Physical Infrastructure Cisco® Catalyst 6509

PANDUIT®
DATA SHEET

Overview

The Cisco® Catalyst 6509 Switch provides high port densities that are ideal for many wiring closet, distribution, and core network deployments. Panduit's Pre-Configured Physical Infrastructures support the deployment of the Cisco® Nexus 6509 switch with pre-assembled configurations that are offered in versions that meet 10 GbE density copper and fiber line card provisioning schemes, including:

- Base configuration does not include connectivity, allows flexibility to mix and match copper and fiber media types
- "Medium Fiber" for switch provisions requiring up to (4) 32-port fiber line cards
- "Medium Copper" for switch provisions requiring up to (4) 48-port copper line cards
- "Heavy Copper" for switch provisions requiring up to (6) 48-port copper line cards

Key Features

Pre-engineered design with validated power, thermal, and space optimization for the Cisco® Catalyst 6509 Switch Platform

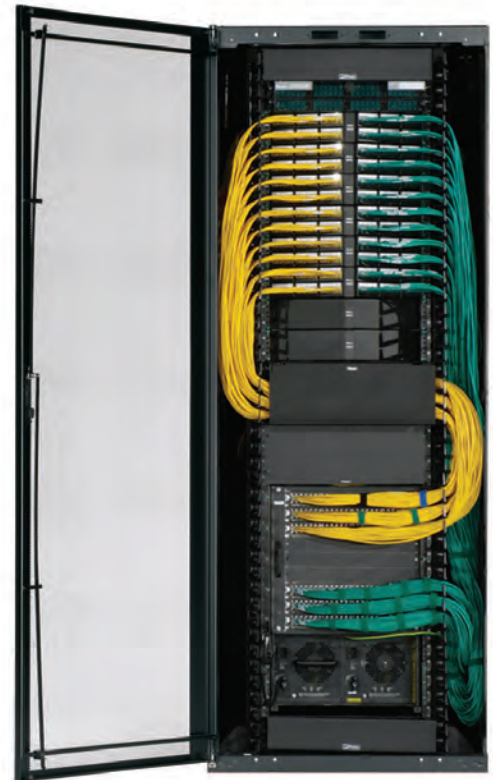
Cisco Compatible Exhaust Ducting (co-engineered and validated with Cisco) that optimizes cooling system efficiency by establishing front to back airflow patterns

Specify and procure cabinet, cabling, cable and thermal management, and grounding and bonding all with **one part number**

Ordering Information

CQ6509B	Pre-Configured Physical Infrastructure for 6509 Base with all necessary cable management, grounding jumpers, and patch panels pre-assembled together. Featuring a 32.0" W x 83.0" H x 40.5" D (812mm x 2108mm x 1028mm) 45 RU Net-Access™ N-Type Cabinet with full perforated front door, split perforated rear doors, side panels, cable management fingers, and POU brackets.
CQ6509F4	Pre-Configured Physical Infrastructure for 6509 Medium Fiber begins with the base configuration and adds enough fiber connectivity to deploy (4) 32-port fiber line cards.
CQ6509C4	Pre-Configured Physical Infrastructure for 6509 Medium Copper begins with the base configuration and adds enough copper connectivity to deploy (4) 48-port copper line cards.
CQ6509C6	Pre-Configured Physical Infrastructure for 6509 Heavy Copper begins with the base configuration and adds enough copper connectivity to deploy (6) 48-port copper line cards.

*Cisco Catalyst 6509 not included in the part numbers above. Always follow active equipment manufacturer's recommended installation practices. Panduit Pre-Configured Physical Infrastructures are shipped on standard pallets. For applications that require shock-resistant packaging to facilitate pre-mounting active equipment, please contact customer service.



Cisco® Catalyst 6509* Pre-Configured Solution shown in a Net-Access™ N-Type Cabinet (Connectivity is offered as an option.)

Solution Components

- (2) 19" High capacity horizontal cable manager, 2 RU
- (2) 19" High capacity horizontal cable manager, 4 RU
- (16) 24-port QuickNet™ Angled Patch Panel
- (1) Cisco 6509 Panduit exhaust duct
- (1) 1 RU Angled filler panel
- (1) 1 RU Filler panel
- (2) Cool Boot® for cabinet top
- (1) Common bonding network jumper kit
- (1) Equipment bonding jumper kit
- (1) ESD port kit
- (1) ESD wrist strap
- (5) Strain relief bar

WORLDWIDE SUBSIDIARIES AND SALES OFFICES

PANDUIT CANADA
Markham, Ontario
cs-cdn@panduit.com
Phone: 800.777.3300

PANDUIT EUROPE LTD.
London, UK
cs-emea@panduit.com
Phone: 44.20.8601.7200

PANDUIT SINGAPORE PTE. LTD.
Republic of Singapore
cs-ap@panduit.com
Phone: 65.6305.7575

PANDUIT JAPAN
Tokyo, Japan
cs-japan@panduit.com
Phone: 81.3.6863.6000

PANDUIT LATIN AMERICA
Guadalajara, Mexico
cs-la@panduit.com
Phone: 52.33.3777.6000

PANDUIT AUSTRALIA PTY. LTD.
Victoria, Australia
cs-aus@panduit.com
Phone: 61.3.9794.9020

For a copy of Panduit product warranties, log on to www.panduit.com/warranty

For more information

Visit us at www.panduit.com

Contact Customer Service by email: cs@panduit.com
or by phone: 800.777.3300

PANDUIT®

©2014 Panduit Corp.
ALL RIGHTS RESERVED.
RKDS02--WW-ENG
7/2014