

HDF3168 Fiber Distribution Frame

APPLICATION

The HDF3168 Fiber Distribution Frame is designed to house patching for cross-connect and interconnect applications between backbone cables and active equipment within a frame or adjoining rack or cabinet. The frame is designed with integrated horizontal and vertical cable management and scalable modular decks for patching and splicing. The frame is ideal for use in data center (Main Distribution Area) and central office (head end) applications where there is a high concentration or aggregation of fibers.

SPECIFICATION

Fiber distribution frame shall stand seven feet tall and occupy a maximum 2' x 2' (24" x 24") floor tile footprint. It shall accommodate up to 3,168 fibers using LC and up to 15,552 fibers using MTP®. The frame shall be cULus 2416 Listed and certified to GR-63-CORE for seismic zone 4 rating. Horizontal and built-in vertical cable managers shall protect, route, and ensure the recommended bend radius for all fiber cables. Patch cables and trunk cables shall be segregated from one another to avoid intermixing. Patching and splicing solutions shall be modular and scalable. The frame shall allow for routing patch cords to adjoining frame, rack, or cabinet at any point in the frame. Port, deck, and tray positions shall be visible from the front of the frame and deck and tray positions from the rear of the frame for ease of identification. Front and rear doors shall be included or offered as an accessory item. System solution shall provide an easy migration path from 10G to 40G/100G. System solution shall allow for a pre-configured frame requiring one part number for ordering. Country of origin for product shall be the United States of America.



FEATURES

- Industry-leading fiber density per square foot (or floor tile space) – 3,168 fibers or 1,584 channels (for 10G) per frame (using LC)
- Aesthetically pleasing look for data centers and showrooms
- Ease of migration to 40G/100G using modular HDX MTP® cassettes and adapter plates
- Modular 3.5" high deck for patching and/or splicing capability
- Simple ease of routing patch cords to adjacent frame or cabinets at any point in the frame
- Use of only one length of patch cord (3 meters) necessary when patching within frame
- Overhead and/or under floor fiber trunk access
- Open design allows for easy cross-connect patching within frame
- Rear doors included with frame to protect backbone fiber cabling
- Minimum bend radius protection designed throughout frame
- Frame with decks and accessories can be pre-configured as part of the Leviton Make-to-Order program

DESIGN CONSIDERATIONS

- Frame includes horizontal and vertical cable management
- Optional front door kits sold separately
- Patch Decks accept HDX MTP Cassettes or Adapter Plates
- Applicable for use with Leviton Overhead Infrastructure Platform
- Seismic Zone 4 Earthquake Kit sold separately

STANDARDS COMPLIANCE

ANSI/TIA-568-C.3 Optical Fiber Cabling Components Standards
ANSI/TIA-942 Telecommunications Infrastructure Standard for Data Centers
cULus 2416 Listed for Information Technology and Communications Equipment Cabinet, Enclosure, and Rack Systems

PHYSICAL SPECIFICATIONS

Dimensions: See page two
Materials: Cold-rolled 12-gauge steel
Load rating: 396 lbs
Shipping weight: 292 lbs (empty frame)

COUNTRY OF ORIGIN

United States

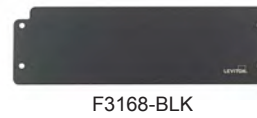
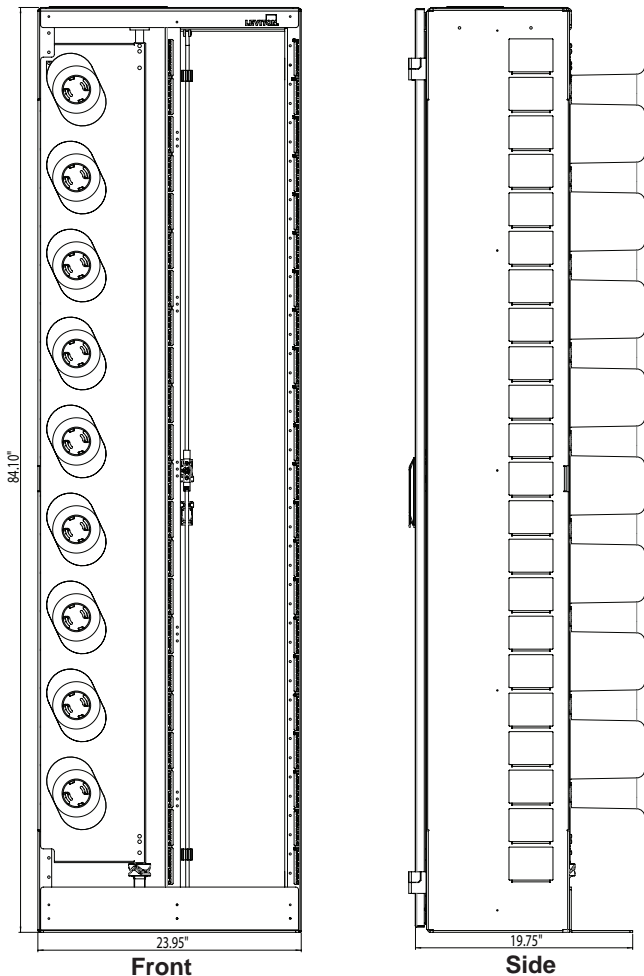
F3168P-22F

WARRANTY INFORMATION

For a copy of Leviton warranties, visit www.leviton.com/warranty.

ELECTRONIC FILES

For CAD files, typical specs, or technical drawings (.DXF, .DWG), visit www.leviton.com.



F3168-22F

HDF3168 Fiber Distribution Frame & Decks

Description	Part No.
Fiber Distribution Frame	F3168-22F*
Patch Deck, empty, 2RU (includes horizontal cable management and cable clamp kit)	F3168-DCK
Splice Deck, empty, 2RU (includes VELCRO® Brand ties, mesh sleeve, and cable clamp kit)	F3168-SPD
24-fiber Heat-Shrink-Style Molded Splice Tray (includes 60 mm splice sleeves)	T5PLS-24F

Kits & Accessories

Description	Part No.
Cross Frame Routing Kit	F3168-CFR
Front Doors Kit	F3168-FDR*
Cable Clamp Kit	F3168-CCK
Seismic Zone 4 Kit	F3168-EQK
2RU Blank Panel	F3168-BLK

* Items do not qualify for prepaid freight program

HDF3168 Frame Options							
# OF PATCH DECKS	# OF CASSETTES OR ADAPTER PLATES PER PATCH DECK	FIBER COUNT MTP CASSETTE	FIBER TYPE	CASSETTE/ PLATE CONNECTOR TYPE (FRONT)	CASSETTE CONNECTOR TYPE (REAR)	POLARITY (CASSETTE)	FRONT DOORS KIT
• 1-22	• 1-12	<ul style="list-style-type: none"> • 12 • 24 • 48 	<ul style="list-style-type: none"> • OM2 • OM3 • OM4 • OS2 	<ul style="list-style-type: none"> • LC • OM3 • SC • MTP 	<ul style="list-style-type: none"> • 12-Fiber MTP • 24-Fiber MTP 	<ul style="list-style-type: none"> • Method A • Method B (Core) • Method B (Edge) • Method C 	<ul style="list-style-type: none"> • Yes • No



Leviton Network Solutions
2222 - 222nd St. SE
Bothell, WA 98021-4416

Asia / Pacific
T +1.631.812.6228
E infoasean@leviton.com

Canada
T +1.514.954.1840
E pcservice@leviton.com

Caribbean
T +1.954.593.1896
E infocaribbean@leviton.com

China
T +852.2774.9876
E infochina@leviton.com

Colombia
T +57.1.743.6045
E infocolombia@leviton.com

tel 1-800-824-3005
tel +1-425-486-2222
appeng@leviton.com
www.leviton.com

Europe
T +33.6.8869.1380
E infoeurope@leviton.com

India / SAARC
T +91.80.4322.5678
E infoindia@leviton.com

Mexico
T +52.55.5082.1040
E lsamarketing@leviton.com

Middle East & Africa
T +971.4.886.4722
E lmeinfo@leviton.com

South Korea
T +82.2.3273.9963
E infokorea@leviton.com