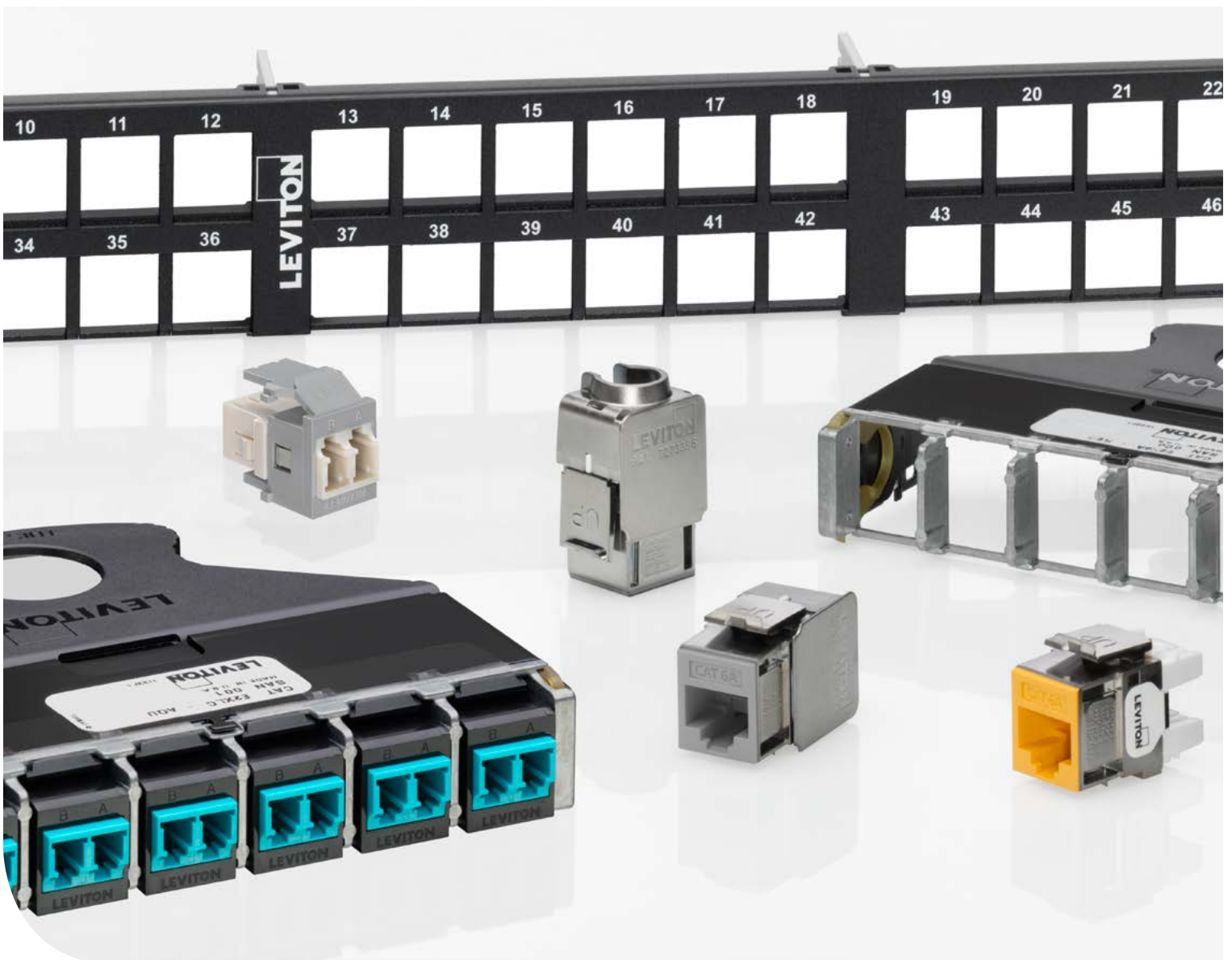
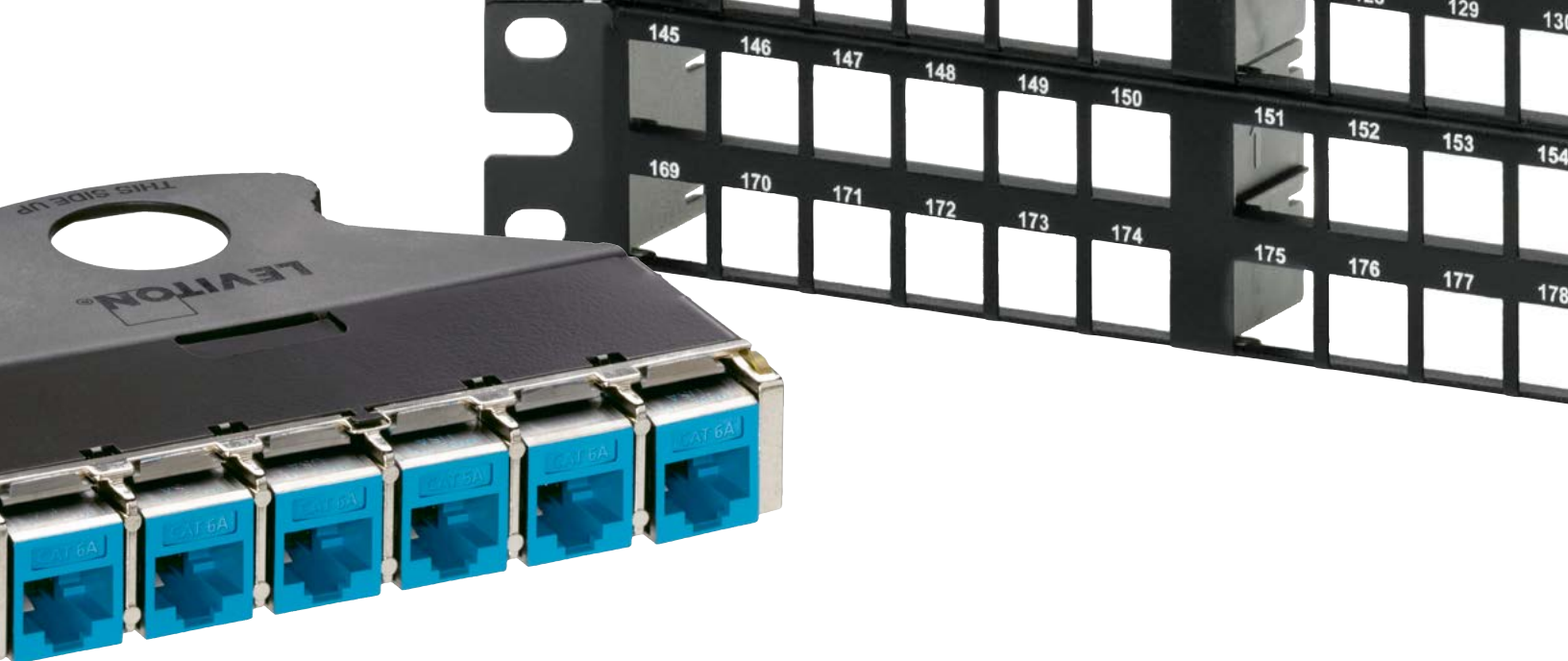


## e2XHD Patching System

Simplify installation and add flexibility  
to copper and fiber cabling applications





The e2XHD Patching System provides a high-density solution for enterprise and data center applications, where fast deployment and simple maintenance are priorities. e2XHD fiber and copper cassettes quickly snap in and pull out of the high-density 1RU and 4RU panels, making installation, moves, adds, and changes easier than ever.

- Flat and angled panels allow a mix-and-match of Leviton fiber and copper snap-in cassettes
- e2XHD cassettes work exclusively with e2XHD panels
- Fiber cassettes are available in 12- or 24-fiber options and OM3, OM4, or single-mode fiber types
- Copper cassettes are available on pre-terminated trunks
- Copper connectors easily snap into cassette after termination
- System accessories include a rear cable manager that snaps directly into the panel, blank cassette inserts for unused cassette openings, and a top cover for the angled panel, minimizing dust or debris

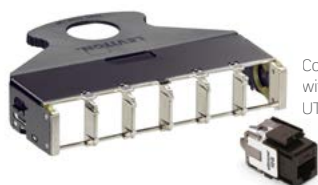
## Simple Installation, Removal, and Cable Routing



- Alignment tabs on rear of cassette makes insertion into patch panel easy
- To remove cassette from panel, simply pull out handle using release latch; no tools required
- Rear cable manager supports both copper and fiber cables, and includes cable management rings and tie downs



MTP adapter on rear of fiber cassette swivels to three positions for easier cable routing.



Copper Cassette is compatible with eXtreme® CAT 6 or CAT 6A UTP QuickPort Connectors

## e2XHD Copper Cassette

- Cassette fits six eXtreme CAT 6A or CAT 6 QuickPort® Connectors
- AXT barrier reduces alien crosstalk between ports
- Cassettes are also available pre-terminated on Leviton trunk cables



MTP-LC 24-Fiber Core Cassette



1x24-Fiber to 3x8-Fiber MTP-MTP Core Cassette



MTP-MTP Pass-Through Core Cassette



12-Fiber QuickPort® LC Cassette



2x12-Fiber to 3x8-Fiber MTP-MTP Edge Cassette



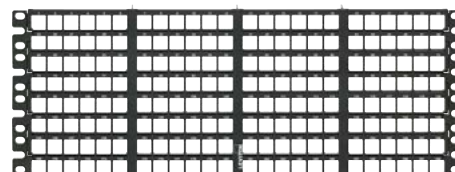
MTP-LC 24-Fiber Edge Cassette, Rear

## e2XHD Fiber Cassettes

- Available in 12- or 24-fiber, OM3, OM4, OM4+, and OS2
- Allows for simple migration path to 40GbE or 100GbE networks with MTP® cassettes
- All cassettes use either 24- or 12-fiber low-loss MTP connectors
- TIA Method B polarity installations require one core cassette for each edge cassette; White fiber cassettes designate edge applications, and black designate core applications



1RU High-Density Angled Panel



4RU High-Density Flat Panel

## e2XHD High-Density Patch Panels

- Holds up to 48 fiber channels or 48 copper ports per rack unit
- Accepts up to 8 copper cassettes per RU
- Accepts up to 8-single or 4-double height fiber cassettes per RU
- Mounts on standard 19-inch relay racks or cabinets

### e2XHD Patch Panel Capacity 24-fiber MTP Cabling

APPLICATION	MAX # OF FIBERS		MAX # OF CHANNELS	
	1RU	4RU	1RU	4RU
10GbE	96	384	48	192
40GbE	192	768	24	96
100GbE	768	3072	32	128

## Accessories

### Rear Cable Managers

- Cable management rings included to help manage and route incoming cables
- Built-in Velcro® Brand tie downs secure fiber or copper cables

### Angled Panel Top and Bottom Cover

- Uses no additional rack space
- Minimizes dust and debris behind panels
- Can be retrofitted after panel is installed

### Angled Panel Blank Insert

- Blocks any unused cassette openings
- Easily snaps into rear of panel



### Universal Clamp Kits

- Mount to rear cable manager or rack, single grommet or multiple cable grommet available

### QuickPort® Connector Removal Tool

- Removes QuickPort modular copper connectors and fiber adapters from cassettes

### ID Label Kit

- Label holder is movable to support network changes
- Non-slip design eliminates gaps on panel face
- Protective window prevents damage to label



## e2XHD PATCHING SYSTEM

PATCH PANELS	1RU	4RU
Angled High-Density e2XHD Patch Panel	E2X1A-D48	E2X4A-192
Flat High-Density e2XHD Patch Panel	E2X1F-D48	E2X4F-192
CASSETTES	PART NO.	
e2XHD 24-fiber MTP <sup>®</sup> -LC Fiber Cassette, Core or Edge	(see options below)	
e2XHD 12-fiber MTP-LC Fiber Cassette, Core	(see options below)	
e2XHD MTP-MTP Fiber Cassette, Core	(see options below)	
e2XHD 24-fiber MTP-MTP Fiber Cassette, Edge	(see options below)	
e2XHD 12-fiber MTP-MTP Fiber Cassette, Edge	(see options below)	
e2XHD 12-fiber QuickPort <sup>®</sup> LC Cassette, OM3 - aqua	E2XLC-AQU	
e2XHD 12-fiber QuickPort LC Cassette, OS2 - blue	E2XLC-BLU	
e2XHD MTP-MTP Pass-Through Cassette, four key-up/key-down adapters	E2XHD-4MP	
e2XHD MTP-MTP Pass-Through Cassette, four key-up/key-up adapters	E2XHD-4MB	
e2XHD Copper Cassette, terminated to trunk cable	Configure online at <a href="http://leviton.com/e2XHD">leviton.com/e2XHD</a>	
e2XHD 6-port Cassette, empty*	E2XHD-BRK	
ACCESSORIES	PART NO.	
e2XHD Angled Panel, Blank Insert	E2XHD-BLK	
e2XHD Rear Cable Manager for Angled Panel, with cable management rings	E2XHD-CMB	
e2XHD Rear Cable Manager for Flat Panel, with cable management rings	E2X1F-CMB	
e2XHD Angled Panel Cover	E2XHD-COV	
QuickPort Connector Removal Tool	E2XHD-JRT	
Universal Opt-X <sup>®</sup> Clamp Kit, Single Cable Grommet (mounts to Rear Cable Manager)	5RCMP-KIT	
Universal Opt-X Clamp Kit, Multiple Cable Grommet (mounts to Rear Cable Manager)	5RCMP-KT2	
Universal Clamp Kit, Single and Multiple Cable Grommet (for rack mounting)	5RCMR-KIT	
e2XHD Label Kit (4 pack)+	E2XHD-LBL	

+ = Label kit occupies one row of panel. \* = QuickPort connectors sold separately

### Make to order! e2XHD MTP FIBER CASSETTE OPTIONS

FIBER TYPE	FIBER COUNT	CONNECTOR TYPE	MTP FIBER COUNT	FOOTPRINT	COLOR	POLARITY
<ul style="list-style-type: none"> <li>OM3</li> <li>OM4 (aqua)</li> <li>OM4+ (violet)</li> <li>OS2</li> </ul>	<ul style="list-style-type: none"> <li>8</li> <li>12</li> <li>24</li> </ul>	<ul style="list-style-type: none"> <li>LC</li> <li>8F MTP (female)</li> </ul>	<ul style="list-style-type: none"> <li>12F MTP</li> <li>24F MTP</li> </ul>	<ul style="list-style-type: none"> <li>12 Fiber (single cassette height)</li> <li>24 Fiber (double cassette height)</li> </ul>	<ul style="list-style-type: none"> <li>MM aqua adapter</li> <li>SM blue adapter</li> <li>Black (MTP only)</li> <li>MM Violet Adapter (OM4 only)</li> </ul>	<ul style="list-style-type: none"> <li>Method A</li> <li>Method B, Core, black</li> <li>Method B, Edge, white</li> <li>Method C</li> </ul>

For assistance customizing your cassettes, please visit [leviton.com/configurator](http://leviton.com/configurator) or call Tech Support at 800.824.3005.

### Packaging

All cassettes are shipped in durable plastic clamshell packaging.



Empty Cassette



Copper Cassette Terminated to Leviton Trunk Cables



MTP-LC 24-fiber Cassette