

## Versi-Duct® Vertical Cable Management System

### APPLICATION

A vertical cable management system in a slotted duct configuration designed to route cable and mount onto an industry standard equipment rack. Two vertical 40" ducts, or one 80" duct (comprised of two 40" ducts) span the full length of a standard 7-foot equipment rack. The Horizontal and Vertical Slotted Ducts come with cable concealing covers and an assortment of accessories.



### SPECIFICATION

A vertical cable management system in a slotted duct configuration for copper and fiber cable systems. The management system shall be cULus listed, PVC rated for 94V-0, ABS rated for UL94HB, and compliant with ANSI/TIA/EIA 568-B standards. It shall mount onto an industry standard 19" equipment rack. The management system shall offer an assortment of accessories including a bend-radius compliant cable router to transition cable from a horizontal to vertical slotted duct.

### FEATURES

- Versatile solution for fiber/copper cable organization and management
- Front only and front/rear configurations
- Cable concealing covers
- Mount on standard equipment racks with top, bottom, and side cable entry
- Finger alignment with rack spacing

### DESIGN CONSIDERATIONS

- Use on side of rack to route, protect and manage fiber or copper cable
- Bend-Radius Compliant Cable Router complies with ANSI/TIA/EIA standards, ensuring 1.18" bend radius

### STANDARDS COMPLIANCE

Meets or exceeds all applicable standards: cULus Listed; complies with TIA/EIA-568-B; and meets FCC Part 68

### PHYSICAL SPECIFICATIONS

Dimensions:	See second page
Materials (channel):	ABS rated for UL94HB
Materials (cover):	PVC rated for UL94V-0

### ACCESSORIES

- **Cable Retainer** - Mounts on the duct fingers. Cable Retainer is adjustable to slide along the duct finger and includes break-away detail to accommodate all duct sizes.
- **Mounting Bracket Kit** - Used to attach a vertical duct to an adjacent equipment rack. Each kit comes with #8 screws.
- **Bend-Radius Compliant Cable Router** - Routes copper or fiber cable from inside the horizontal duct to the vertical duct. Maintains 1.18" bend-radius minimum.
- **Cable Retainer** - Mounts on the duct fingers. Each Cable Retainer is adjustable to slide along the duct finger and includes break-away detail to accommodate all duct sizes.
- **Slack Loop Storage Organizer** - Stores slack cable and maintains a minimum of 1.18" bend-radius. Designed to be mounted on the duct fingers and it can be adjusted to a variety of slack loop sizes.
- **Duct Cover Hinge** - Designed to easily open and close duct cover for increased protection and easy access.

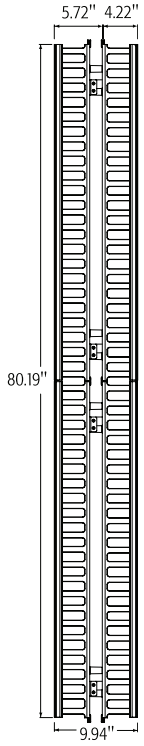
Accessories sold separately

### WARRANTY INFORMATION

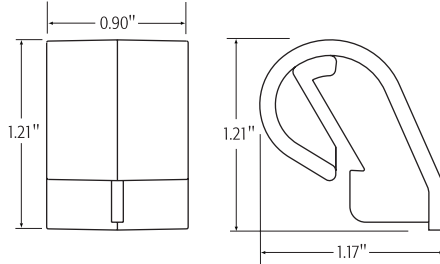
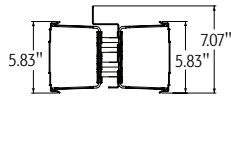
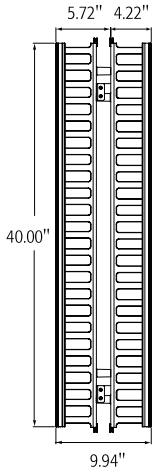
For a copy of Leviton product warranties, visit [www.leviton.com](http://www.leviton.com).

**ELECTRONIC FILES**

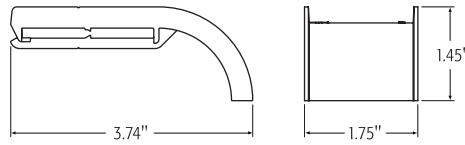
For CAD files, Typical specs, or Dimensional Line Art. (.DXF, .DWG, MS-DOS.eps or .TXT), visit [www.leviton.com](http://www.leviton.com).



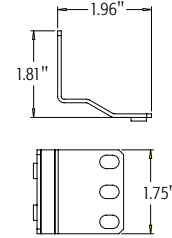
Vertical Slotted Duct  
(front and rear)



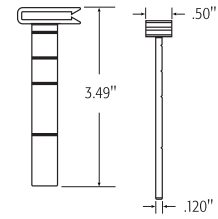
Duct Cover Hinge



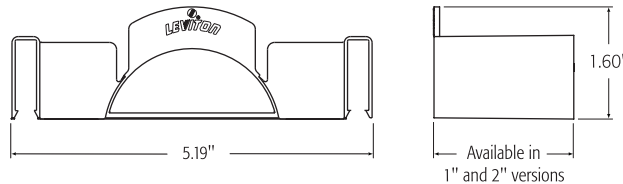
Bend-Radius Compliant Router



Mounting Bracket



Cable Retainer



Slack Loop Organizer and Extended Version

4940L-VFx 4980L-VFx 49265-xxx

**PART NUMBERS**

Description	Part No.
Versi-Duct Vertical Slotted Duct - 4x5 rear and 4x5 front (front and rear) 40"H	4940L-VFR
Versi-Duct Vertical Slotted Duct - 4x5 (front only) 40"H	4940L-VFO
Versi-Duct Vertical Slotted Duct - 4x5 rear and 4x5 front (front and rear) 80"H	4980L-VFR
Versi-Duct Vertical Slotted Duct 4x5 (front only) 80"H	4980L-VFO
Versi-Duct Cable Retainer	49265-WR1
Versi-Duct Slack Loop Organizer	49265-SL1
Versi-Duct Slack Loop Organizer (Extended)	49265-SL2
Versi-Duct Mounting Bracket	49265-BKT
Versi-Duct Duct Cover Hinge	49265-HNG

