

Cable Management Accessories

3" Vertical Manager Ring

APPLICATION

3" wide, vertical distribution ring for equipment rack cords/cables. Mounts on side of rack, providing two separate distribution rings for front and rear cable routing. Optional interbay tie bracket (49261-BKT).

STANDARDS COMPLIANCE

Meets or exceeds all applicable standards: UL Listed; CSA Certified; complies with TIA/EIA-568-A and TIA/EIA-606.

PHYSICAL SPECIFICATIONS

Dimensions: 3" W x 4.5" D
Capacity: 180 cables or patch cords (.25" O.D., 4-pair, UTP cable)
Materials: 3/16" x 3/8" radius-edged steel, black powder coat finish

FRONT RING:

Dimensions: 3" W x 6" D
Capacity: 250 cables or patch cords (.25" O.D. 4-pair, UTP cable)
Materials: 3/16" x 3/8" radius-edged steel, black powder coat finish

MOUNTING BRACKET:

Materials: 12 gauge steel, black powder coat finish

Mounting: Two #12-24 pilot-point screws are included. Mounting holes are elongated.

DESIGN CONSIDERATIONS

- Specify this component as your primary vertical management for racks when used in combination with horizontal manager panels 49253-BCM or 49253-LPM.
- Specify this component as interbay vertical management (between racks) to distribute large volumes of patch cords when used with horizontal manager panels 49252-P02 and 49252-PCM. Note: These panels include vertical management more suitable to routing interbay patch cords (on the same rack).
- Allow for 3" rack spacing on center in multi-bay rack arrangements.
- Use 3-5 rings per side for adequate containment of patch cord and station cable bundles. Place rings on both sides of rack for more balanced patch cord distribution.
- Include one interbay tie bracket 49261-BKT to secure each ring to adjacent rack.

See ELECTRONIC FILES for CAD files (.DXF, .DWG, MS-DOS.EPS) on disk



For ELECTRONIC Typical Specs see (.TXT) file on disk.



TYPICAL SPECIFICATION

Vertical manager rings shall mount on the side of a standard equipment rack and provide two separate distribution rings for front and rear cable management. The rear rings shall be 3" wide x 4.5" deep and provide the capacity to manage and store 180 cords/cables. The front rings shall be 3" x 6" and provide the capacity to manage and store 250 cords/cables. The vertical manager rings shall be capable of securing adjacent racks to one another with an optional interbay tie bracket. The rings shall have edges with a radius to protect cables from nicks and tears. The bracket material shall be .075" steel and the ring shall be 3/16" x 3/8" steel with black powder coat finish. The manufacturer shall provide a one-year limited product warranty and 15 year product performance guarantee. The manufacturer shall provide a lifetime warranty against defects in material and workmanship, and an application guarantee when installed as part of a certified system.

INSTALLATION NOTES

- Temporarily install two rings, at top and bottom, between racks before securing racks to the floor.
- Adjust ring locations to meet as built arrangement of equipment, patch panels, and horizontal wire manager panels.
- Attach one interbay tie bracket 49261-BKT to secure each ring to adjacent rack.

UNIQUE FEATURES

- Rings have edges with a radius to protect cable from nicks or wear.

WARRANTY INFORMATION

- One-year limited product warranty and 15-year performance guarantee are standard.
- Product and performance warranties are extended to a Lifetime as part of Leviton's Certified Cabling System.



For Applications Engineering Support – Call 1-425-485-4288; in USA call 1-800-722-2082
Spec sheets and updates are also available at www.levitonvoicedata.com.
See page T57 for dimensions and other pertinent information.



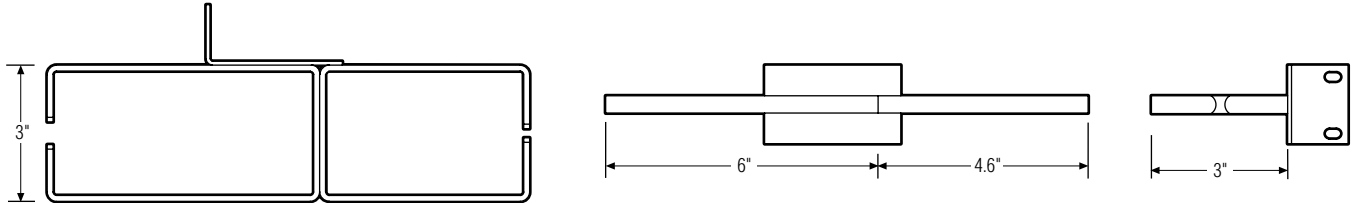
Cable Management Accessories

Part Number 49260-MR3

.....

DIMENSIONAL LINE ART

See ELECTRONIC FILES for CAD images
(.DXF, .DWG, MS-DOS.EPS)



PART NUMBER

Description	Part No.
3" Wide Vertical Manager Ring	49260-MR3

For Applications Engineering Support – Call 1-425-485-4288; in USA call 1-800-722-2082.
Spec sheets and updates are also available at www.levitonvoicedata.com.



2222 – 222nd St. SE • Bothell, WA 98021 USA • Tel: 1-800-722-2082 / 1-425-485-4288 • Fax: 1-425-483-5270 • Int'l Fax: 1-425-485-9170