



F84540-000 | FOSC400-A8-NT-0-NGV

FOSC™400 A8 Fiber Optic Splice Closure, Heat Shrink Cable sealing, no pre-installed trays, ground feedthrough lugs, with test valve

- Single-ended, O-ring sealed dome closure for splicing feeder and distribution cables
- Compatible with most common cable types: e.g. loose tube, central core, ribbon fiber
- FOSC splice trays hinged for access to any splice without disturbing other trays
- Closure can be used in aerial, pedestal and underground (up to 5 meters) environments
- Compatible with CommScope's CWDM modules and optical splitter trays

Product Classification

Brand	FOSC™
Product Series	FOSC 400
Product Type	Butt feeder and distribution closure
Regional Availability	Latin America North America

Body Features

Cable Seal	Heat Shrink
Color	Black

Configuration Features

Splice Capacity	144
Port Shape	Oval (1) and round (8)
Flash Test Valve	Yes
Number of Pre-installed Splice Trays	none
Cable Blocking	No
Ground Feedthrough	Yes
Ground Feedthrough Lugs	1
Slack Basket	Optional
Splice Capacity (Mass Fusion)	144
Splice Capacity (Single Splice, SM12 Modules)	96
Splice Capacity (Single Splice, SM6 Modules)	48

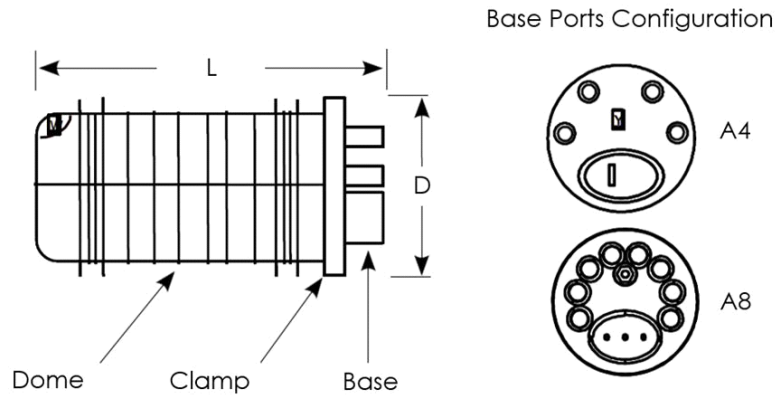
Dimensions

Closure Diameter	150.000 mm 5.906 in
Length	420.00 mm 16.54 in

Operation/Application

Environment	Direct burial Manholes
-------------	--------------------------

Outline Drawing



Packaging Features

Minimum Order Quantity	1
Packaging Method	Box/Carton

Regulatory Compliance/Certifications

Agency
RoHS 2011/65/EU

Classification
Compliant