



915207-000 | FOSC400-A4-24-1-NGV

**FOSC™400 A4 Fiber Optic Splice Closure, Heat Shrink Cable sealing, one pre-installed 24-splice tray, ground feedthrough lugs, with test valve**

- Single-ended, O-ring sealed dome closure for splicing feeder and distribution cables
- Compatible with most common cable types: e.g. loose tube, central core, ribbon fiber
- FOSC splice trays hinged for access to any splice without disturbing other trays
- Closure can be used in aerial, pedestal and underground (up to 5 meters) environments
- Compatible with CommScope's CWDM modules and optical splitter trays

## Product Classification

Brand	FOSC™
Product Series	FOSC 400
Product Type	Butt feeder and distribution closure
Regional Availability	Latin America   North America

## Body Features

Cable Seal	Heat Shrink
Color	Black

## Configuration Features

Port Shape	Oval (1) and round (4)
Flash Test Valve	Yes
Number of Pre-installed Splice Trays	24-fiber (1)
Ground Feedthrough	Yes
Slack Basket	Optional

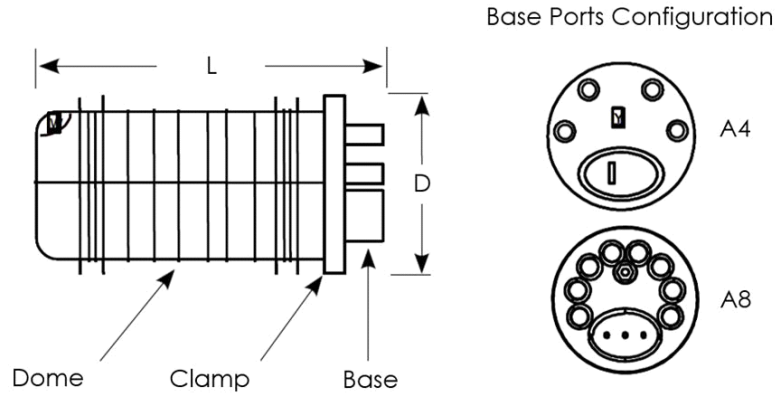
## Dimensions

Closure Diameter	150.000 mm   5.906 in
Length	420.00 mm   16.54 in

## Operation/Application

Environment	Direct burial   Manholes
-------------	--------------------------

## Outline Drawing



## Packaging Features

Minimum Order Quantity	1
Packaging Method	Box/Carton

## Regulatory Compliance/Certifications

**Agency**  
RoHS 2011/65/EU

**Classification**  
Compliant