



SP Series

Gigabit Small Form-Factor Pluggable Modules

The Allied Telesis SP Series delivers flexible, full-duplex Ethernet connectivity. These hot-swappable fiber and copper interfaces simply plug into the SFP slot on all SFP-compatible devices. Configuration can be optimized to meet a wide variety of distance and service requirements.

Compatibility

Allied Telesis SP Series Gigabit Small Form-Factor Pluggables (SFPs) are supported on all Allied Telesis devices with SFP uplink connections.

SP Series SFPs are Multi-Sourcing Agreement (MSA)-compliant, and fully adhere to industry standard networking regulations. This allows the SP Series to be used with other MSA-compliant platforms that support SFP uplink connections.

For Cisco compatibility please refer to the "SFP Compatibility Flyer".

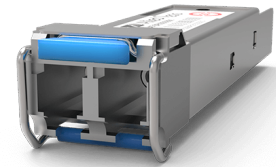
Options

SP Series SFPs offer short-haul, long-haul and Bi-Directional (BiDi) solutions. This flexibility allows network managers to easily extend network distance and bandwidth.

Using an SFP BiDi transceiver can upgrade transmission capacity on a typical network—without installing new fibers—by utilizing a single fiber for both the send and receive signals.

Multiple temperature ranges

Different network environments call for a variety of temperature ranges. The SP Series is available in standard (0-70°C), industrial (-40 to 85°C), and extended (-40 to 105°C) temperature variants.



Key Features

- Fiber and copper solutions
- Compact size
- Flexible architecture
- Plug and Play for ease of use
- Self-locking mechanism
- MSA-compliant
- Two year warranty*

* Warranties may be region-specific. For local warranty periods, please visit alliedtelesis.com/support, or contact your local sales office

Specifications

Standard Gigabit SFPs

PRODUCT	FIBER TYPE	CONNECTOR TYPE	MAXIMUM DISTANCE	WAVELENGTH Tx/Rx (nm)	TRANSMIT (dBm) (dBm)			RECEIVE SENSITIVITY (dBm)	POWER BUDGET (dBm)	OVERLOAD (dBm)	OPERATING TEMPERATURE
					DDM*	MIN	MAX				
SPTX	10/100/1000T	RJ45	100 m	-	-	-	-	-	-	-	0°C to 70°C (32°F to 158°F)
SPTX-90	10/100/1000T	RJ45	100 m	-	-	-	-	-	-	-	0°C to 70°C (°F to 158°F)
SPTX/I	10/100/1000T	RJ45	100 m	-	-	-	-	-	-	-	-40°C to 85°C (-40°F to 185°F)
SPEX	MMF	LC	2 km	1310	-	-9	-1	-19	10	-3	0°C to 70°C (32°F to 158°F)
SPEX/E	MMF	LC	2 km	1310	-	-9	-1	-21	12	-3	-40°C to 105°C (-40°F to 221°F)

PRODUCT	FIBER TYPE	CONNECTOR TYPE	MAXIMUM DISTANCE	WAVELENGTH Tx/Rx (nm)	TRANSMIT (dBm) (dBm)			RECEIVE SENSITIVITY (dBm)	POWER BUDGET (dBm)	OVERLOAD (dBm)	OPERATING TEMPERATURE
					DDM*	MIN	MAX				
SPSX	MMF	LC	220-550 m	850	-	-9.5	-3	-17	7.5	-3	0°C to 70°C (32°F to 158°F)
SPSX-90	MMF	LC	220-550 m	850	-	-8	-3	-19	11	-3	0°C to 70°C (32°F to 158°F)
SPSX/I	MMF	LC	220-550 m	850	Yes	-9.5	-4	-17	7.5	-3	-40°C to 85°C (-40°F to 185°F)
SPSX/E	MMF	LC	220-550 m	850	-	-9	-1	-18	9	-3	-40°C to 105°C (-40°F to 221°F)
SPLX10	SMF	LC	10 km	1310	-	-9	-3	-20	11	-3	0°C to 70°C (32°F to 158°F)
SPLX10-90	SMF	LC	10 km	1310	-	-9	-3	-23	14	-3	0°C to 70°C (32°F to 158°F)
SPLX10/I	SMF	LC	10 km	1310	Yes	-9	-3	-19	10	-3	-40°C to 85°C (-40°F to 185°F)
SPLX10/E	SMF	LC	10 km	1310	-	-9	-3	-21	12	-3	-40°C to 105°C (-40°F to 221°F)
SPLX40	SMF	LC	40 km	1310	Yes	-4	1	-23	19	-1	0°C to 70°C (32°F to 158°F)
SPLX40/E	SMF	LC	40 km	1310	-	-5	0	-23	18	-3	-40°C to 105°C (-40°F to 221°F)
SPZX80	SMF	LC	80 km	1550	Yes	0	5	-24	24	-1	0°C to 70°C (32°F to 158°F)

MMF = Multi Mode Fiber, SMF = Single Mode Fiber

*Digital Diagnostics Monitoring

BiDi SFPs

PRODUCT	FIBER TYPE	CONNECTOR TYPE	MAXIMUM DISTANCE	WAVELENGTH Tx/Rx (nm)	TRANSMIT (dBm) (dBm)			RECEIVE SENSITIVITY (dBm)	POWER BUDGET (dBm)	OVERLOAD (dBm)	OPERATING TEMPERATURE
					DDM*	MIN	MAX				
SPBD10-13	SMF	LC	10 km	1310 /1490	-	-9	-3	-20	11	-3	-40°C to 85°C (-40°F to 185°F)
SPBD10-14	SMF	LC	10 km	1490/1310	-	-9	-3	-20	11	-3	-40°C to 85°C (-40°F to 185°F)
SPBD20-13/I	SMF	SC	20 km	1310 /1490	-	-9	-3	-23	14	-3	-40°C to 95°C (-40°F to 203°F)
SPBD20-14/I	SMF	SC	20 km	1490/1310	-	-9	-3	-23	14	-3	-40°C to 95°C (-40°F to 203°F)
SPBD20LC/I-13	SMF	LC	20 km	1310 /1490	-	-5	0	-20	15	0	-40°C to 85°C (-40°F to 185°F)
SPBD20LC/I-14	SMF	LC	20 km	1490/1310	-	-5	0	-20	15	0	-40°C to 85°C (-40°F to 185°F)
SPBD20-14-EXT	SMF	SC	20 km	1490/1310	Yes	2	7	-29	31	-1	-40°C to 85°C (-40°F to 185°F)
SPBD20EPON-13/I	SMF	SC	20 km	1310 /1490	Yes	-9	-1	-2	1	-1	-40°C to 85°C (-40°F to 185°F)

PRODUCT	FIBER TYPE	CONNECTOR TYPE	MAXIMUM DISTANCE	WAVELENGTH Tx/Rx (nm)	DDM*	TRANSMIT (dBm) (dBm)		RECEIVE SENSITIVITY (dBm)	POWER BUDGET (dBm)	OVERLOAD (dBm)	OPERATING TEMPERATURE
						MIN	MAX				
SPBD20DUAL-14	SMF	LC	20 km	1490/1310	Yes	-8	-3	-23	15	-3	-40°C to 85°C (-40°F to 185°F)
SPBD40DUAL-14	SMF	LC	40 km	1490/1310	Yes	-3	2	-23	20	-3	-40°C to 85°C (-40°F to 185°F)
SPBD40-13/I	SMF	LC	40 km	1310 /1490	Yes	-3	2	-23	20	-3	-40°C to 85°C (-40°F to 185°F)
SPBD40-14/I	SMF	LC	40 km	1490/1310	Yes	-3	2	-23	20	-3	-40°C to 85°C (-40°F to 185°F)

MMF = Multi Mode Fiber, SMF = Single Mode Fiber

*Digital Diagnostics Monitoring

Ordering Information

AT-SPTX

10/100/1000T SFP, RJ-45 (100 m)

AT-SPTX-90

10/100/1000T SFP, RJ-45 (100 m), TAA**

AT-SPTX/I

10/100/1000T SFP, RJ-45 (100 m), I-Temp

AT-SPEX

1000EX SFP, LC, MMF, 1310 nm, TAA**

AT-SPEX/E

1000EX SFP, LC, MMF, Ext. Temp, TAA**

AT-SPSX

1000SX SFP, LC, MMF, 850 nm

AT-SPSX-90

1000SX SFP, LC, MMF, 850 nm, TAA**

AT-SPSX/I

1000SX SFP, LC, MMF, 850 nm, I-Temp

AT-SPSX/E

1000SX SFP, LC, MMF, Ext. Temp, TAA**

AT-SPLX10

1000LX SFP, LC, SMF, 1310 nm (10 km)

AT-SPLX10/I

1000LX SFP, LC, SMF, 1310 nm, (10 km), I-Temp

AT-SPLX10-90

1000LX SFP, LC, SMF, (10 km), TAA**

AT-SPLX10/E

1000LX SFP, LC, SMF, (10 km), Ext. Temp, TAA**

AT-SPLX40

1000LX SFP, LC, SMF, 1310 nm, (40 km)

AT-SPLX40/E

1000LX SFP, LC, SMF, (40 km) Ext. Temp

AT-SPBD10-14

10 km, 1G, SMF, BiDi, LC
(1490Tx/1310Rx)

AT-SPBD20-13/I

20 km, 1G, SMF, BiDi, SC
(1310Tx/1490Rx)

AT-SPBD20-14/I

20 km, 1G, SMF, BiDi, SC
(1490Tx/1310Rx)

AT-SPBD20LC/I-13

20 km, 1G, SMF, BiDi, LC, TAA**
(1310Tx/1490Rx)

AT-SPBD20LC/I-14

20 km, 1G, SMF, BiDi, LC, TAA**
(1490Tx/1310Rx)

AT-SPBD20-14-EXT

20 km, 1G, SMF, BiDi, SC
(1310Tx/1490Rx)

AT-SPBD20EPON-13/I

20 km, 1G, EPON, SMF, BiDi, LC
(1310Tx, 1490Rx)

AT-SPBD20DUAL-14

20 km, 2x1G, CSFP, SMF, BiDi, LC
(1490Tx/1310Rx)

AT-SPBD40DUAL-14

40 km, 2x1G, CSFP, SMF, BiDi, LC
(1490Tx/1310Rx)

AT-SPBD40-13/1

40 km, 1G, SMF, BiDi, LC, TAA**
(1310Tx/1490Rx)

AT-SPBD40-14/1

40 km, 1 G, SMF, BiDi, LC, TAA**
(1490Tx/1310Rx)

AT-SPZX80

1000ZX SFP, LC, SMF, 1550 nm, (80 km)

TAA = Trade Act Agreement Compliant***NETWORK SMARTER*North America Headquarters**

19800 North Creek Parkway

Suite 100

Bothell, WA 98011 USA

T: +1 800 424 4284

F: +1 425 481 3895

Asia-Pacific Headquarters

11 Tai Seng Link

Singapore 534182

T: +65 6383 3832

F: +65 6383 3830

EMEA & CSA Operations

Incheonweg 7

1437 EK Rozenburg

The Netherlands

T: +31 20 7950020

F: +31 20 7950021

© 2018 Allied Telesis, Inc. All rights reserved. Information in this document is subject to change without notice. All company names, logos, and product designs that are trademarks or registered trademarks are the property of their respective owners.

617-000592 RevF