

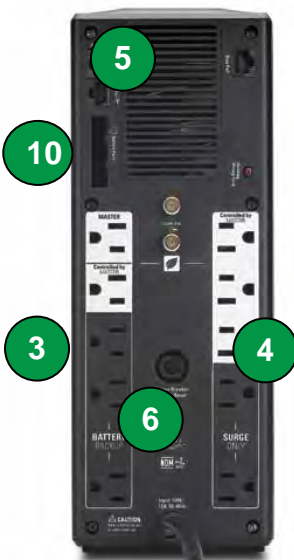
APC Back-UPS® Pro 1300/1500

Power-Saving, high performance power protection for office computers

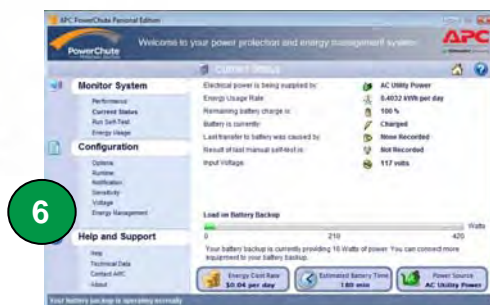
The Back-UPS Pro provides abundant battery backup power, so you can work through medium and extended length power outages. It safeguards your equipment against damaging surges and spikes that travel along utility and data lines. The Back-UPS Pro also features automatic voltage regulation (AVR), which instantly adjusts high and low voltages to safe levels, so you can work indefinitely during brownouts and overvoltages.

The Back-UPS Pro also includes unique “green” features, like power-saving outlets that automatically turn off idle peripherals. A high efficiency charging system and “AVR Bypass” also reduce power consumption. With the rest of the Back-UPS Pro’s standard features, this is the perfect unit to protect your productivity from the constant threat of bad power and lost data.

Product Features:



- 1 **LCD (Liquid Crystal Display)** gives the status of over 20 different utility and battery backup conditions.
- 2 **Automatic Voltage Regulation (AVR)** instantly corrects voltage fluctuations so you can work indefinitely through brownouts and overvoltages.
- 3 **5 “Battery Backup & Surge Protected” Outlets** keep a CPU, monitor and other critical devices running when the power goes out or fluctuates outside safe levels. (Includes one power-saving “Controlled” outlet).
- 4 **5 “Surge Only” Outlets** protect printers, faxes or other equipment without reducing battery capacity. (Includes three power-saving “Controlled” outlets).
- 5 **Data Line Surge Protection** guards against surges and spikes traveling over Ethernet or coax cable lines.
- 6 **PowerChute Software** lets you use your computer to access additional power protection and management features:
 - Preserves your work, shuts down system during outages
 - Restarts your system, minimizing work disruptions
 - Enables customization of your Back-UPS settings
 - Monitors and displays power and battery status
- 7 **Push Button Circuit Breaker** enables quick recovery from overloads.
- 8 **3 Yr Warranty, \$150,000 Equipment Protection Policy, free technical support and data recovery services.**
- 9 **Automatic Diagnostic Testing** ensures your unit is ready when you need it.
- 10 **External Battery Pack Compatibility** allows you to dramatically increase your run time. (BR1500G only)



Back-UPS Pro 1300 & 1500 Specifications

Model Number	BR1300G	BR1500G
Output		
Output Capacity	1300 VA / 780 Watts	1500 VA / 865 Watts
Output Volt., Freq. (on utility)	120V, 50 or 60 Hz, +/- 3Hz (auto sensing)	120V, 50 or 60 Hz, +/- 3Hz (auto sensing)
Output Volt., Freq. (on battery)	115V +/-8%, 50 or 60Hz +/-1Hz (auto sensing)	115V +/-8%, 50 or 60Hz +/-1Hz (auto sensing)
Output Connections	10 total NEMA 5-15R outlets: 5 battery & surge (incl. 1 <i>Master</i> & 1 <i>Controlled</i>) 5 surge protection only (incl. 3 <i>Controlled</i> outlets)	10 total NEMA 5-15R outlets: 5 battery & surge (incl. 1 <i>Master</i> & 1 <i>Controlled</i>) 5 surge protection only (incl. 3 <i>Controlled</i> outlets)
Waveform Type	Stepped Approximation to Sine Wave	Stepped Approximation to Sine Wave
Input		
Input Voltage, Frequency	120V, 50 or 60 Hz, +/- 3 Hz	120V, 50 or 60 Hz, +/- 3 Hz
Input Connection	6 ft cord with NEMA 5-15 plug	6 ft cord with NEMA 5-15 plug
Surge Protection		
AC Power Surge Protection	All outlets	All outlets
Data Line Surge Protection	Network: 10/100/1000 Base-T (gigabit) Ethernet Coax cable (CATV, SATV, modem, A/V)	Network: 10/100/1000 Base-T (gigabit) Ethernet Coax cable (CATV, SATV, modem, A/V)
Physical		
Unit Dimensions (H x W x D)	11.9 x 4.4 x 15.0" (30.2 x 11.2 x 38.1 cm)	11.9 x 4.4 x 15.0" (30.2 x 11.2 x 38.1 cm)
Unit Weight	28.3 lbs (12.9 kg)	29.4 lbs (13.4 kg)
Shipping Dims. (H x W x D)	15.0 x 9.25 x 19.0" (38.1 x 22.9 x 48.3 cm)	15.0 x 9.25 x 19.0" (38.1 x 22.9 x 48.3 cm)
Shipping Weight	30.8 lbs (14.0 kg)	31.9 lbs (14.5 kg)
Color	Black	Black
UPC Code	731304268765	731304268772
Battery		
Battery Type	Sealed, lead-acid, maintenance-free	Sealed, lead-acid, maintenance-free
Extended run battery pack compatibility	No	Yes p/n: BR24BPG
Management		
Alarms	Visual (LCD) and audible alarms	Visual (LCD) and audible alarms
Auto-Shutdown Software	PowerChute Personal Edition (via USB and serial interface)	PowerChute Personal Edition (via USB and serial interface)
Safety		
Certification/Approvals	FCC Part 15 Class B, NOM, TUV, UL1778	FCC Part 15 Class B, NOM, TUV, UL1778

APC by Schneider Electric
 132 Fairgrounds Rd
 West Kingston, RI 02892
 Tel: 800-800-4272
 www.apc.com

