

A close-up photograph of a Schlage B500 Series deadbolt and lever handle installed on a dark wood door. The deadbolt is at the top, and the lever handle is at the bottom. Both are finished in a brushed metal, likely 626 satin chrome. The deadbolt has a keyhole and the Schlage logo. The lever handle is a modern, curved design with a keyhole on its end. The background is a blurred indoor scene with people sitting at a table.

B500 Series

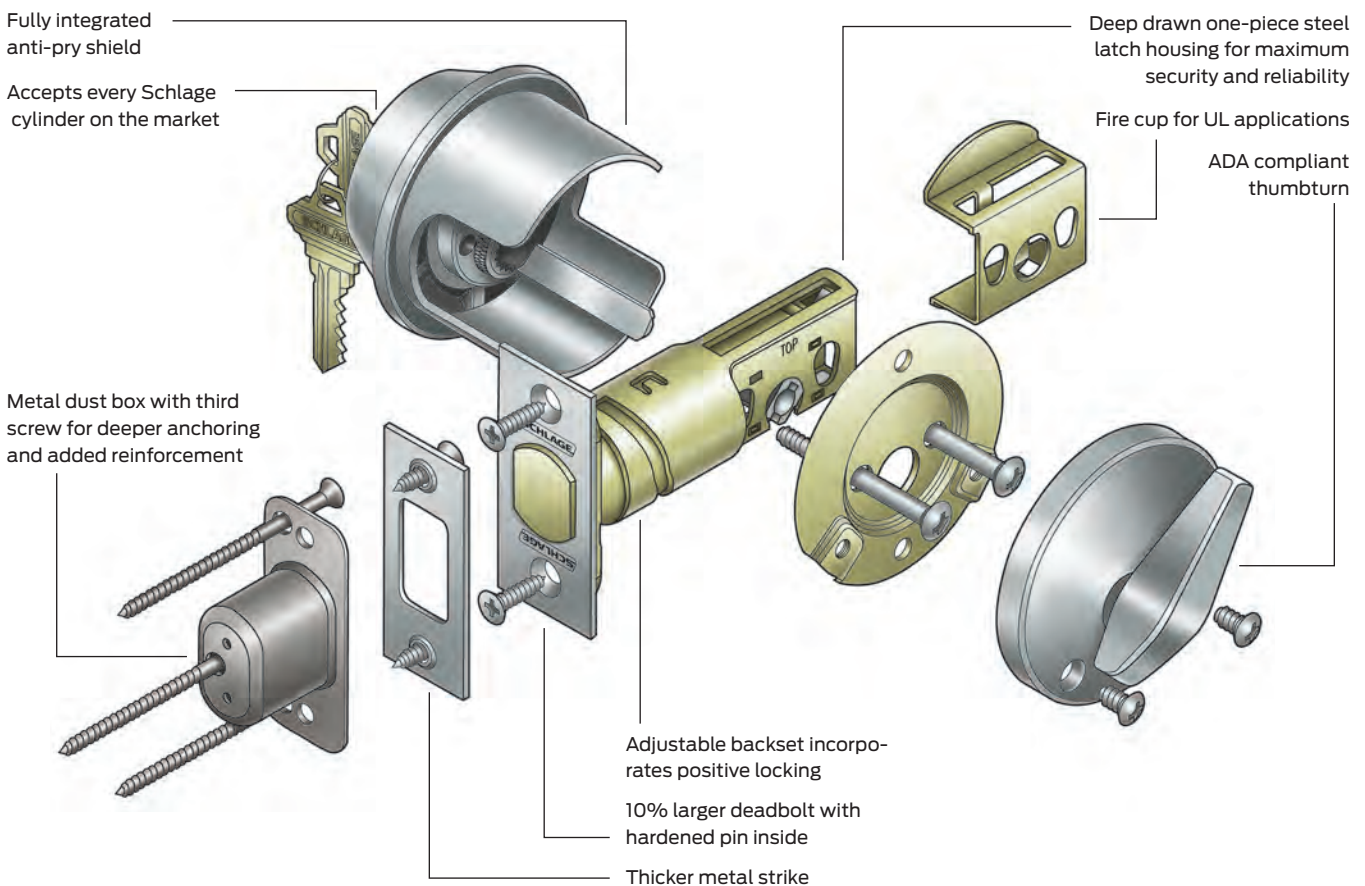
The B500 Series deadbolt is a revolutionary new deadbolt that delivers higher security, tougher performance and the ultimate in installation versatility.

Designed by locksmiths for locksmiths, the B500 Series deadbolt can be fitted with any Schlage cylinder, fits virtually every door you service, enhances lock strength on the jamb side of the door and will change forever the way you look at deadbolts.

Pictured here: B500 (Grade 2) deadbolt with ND Series Athens lever shown in 626 satin chrome

The best deadbolt ever designed by locksmiths

- Adjustable backset with lock-in-place helix design
- Integrated anti-pry shield protects latch
- Thicker metal security strike back-up on jamb side
- Security strike on jamb has third screw for stronger, deeper anchoring
- Added space inside strike box for true deadlatch
- Seamless steel latch construction along the entire length of the bolt housing
- 10% larger diameter deadbolt
- Zinc bolt with spinning hardened steel pin inside
- Tapered front housing that can't be unscrewed
- Integrated trim piece for fewer pieces out of the box
- Large, easy-to-use, ADA compliant thumbturn
- Meets UL 10B and UL 10C requirements



Deadbolt designs

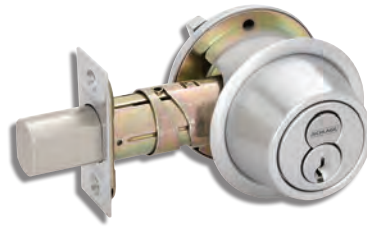
B500 Series

A versatile and economical Grade 2 deadbolt for medium duty commercial and heavy duty residential applications.

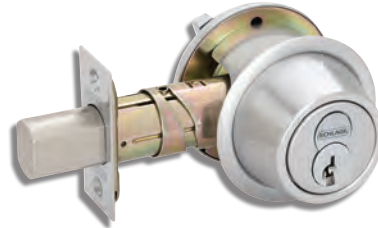
Furnished with conventional cylinder standard.

Available with Primus XP high security cylinder, Primus XP UL437 Listed high security cylinder, full size interchangeable core cylinder, Primus XP interchangeable core cylinder, or small format interchangeable core (SFIC) cylinder.

Fits 2 1/8" (54 mm) prep standard and anti-pry shield can be removed to fit 1 1/2" (38 mm) prep. See function charts for required cross bore dimensions.



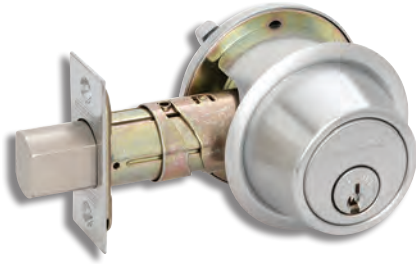
Full size interchangeable core



Small format interchangeable core



Thumbturn for B500



Design shown in 626 satin chrome plated



B500 Series with occupied indicator (B571); 61-509 Emergency key included

Deadbolt finishes

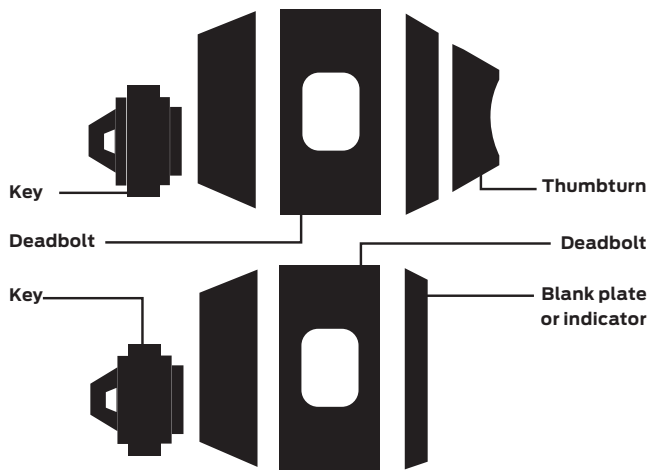
605 Bright brass	606 Satin brass	609 Antique brass	612 Satin bronze	613 Oil rubbed bronze	619 Satin nickel	622 Matte black	625 Bright chromium plated	626 Satin chromium plated	626AM Anti-microbial coating	643e Aged bronze





Product	605	606	609	612	613	619	622	625	626	626AM	643e
B500	•	•	•	•	•	•	•	•	•	•	•

e = an equivalent finish to the BHMA standard.

Deadbolt functions

ANSI A156.36 bored deadbolt locks



-  Standard cylinder.
-  FSIC - full size interchangeable core option.
-  SFIC - small format interchangeable core option.
-  Complies with ADA Accessibility Guidelines.

***Caution:**

Double cylinder locks on any door are a life safety hazard in times of emergency and their use is not recommended. Installation should be in accordance with existing codes only.

ADA compliant:

Schlage Lock Company offers a wide selection of locks designed to meet the Americans with Disabilities Act.

Schlage	ANSI
B560P	E0152
Single cylinder deadbolt	
<ul style="list-style-type: none"> ▪ Deadbolt thrown or retracted by key outside or thumbturn inside 	

Outside Inside



Schlage	ANSI
B561	E0162
Cylinder only x blank plate deadbolt	
<ul style="list-style-type: none"> ▪ Deadbolt thrown or retracted by key outside ▪ Blank plate with exposed screws inside 	

Outside Inside



Schlage	ANSI
B562P*	E0142
Double cylinder deadbolt	
<ul style="list-style-type: none"> ▪ Deadbolt thrown or retracted by key either side ▪ Not UL rated 	

Outside Inside



Schlage	ANSI
B563	E0172
Classroom deadbolt	
<ul style="list-style-type: none"> ▪ Deadbolt thrown or retracted by key outside ▪ Inside units retracts bolt only 	

Outside Inside



Schlage	ANSI
B571	-
Door bolt occupancy indicator	
<ul style="list-style-type: none"> ▪ Deadbolt thrown or retracted by thumbturn inside ▪ Outside indicator displays "In use" or "Vacant" ▪ Requires 1 1/2" cross bore prep ▪ Not UL rated ▪ 61-509 Emergency key included 	

Outside Inside



Schlage	ANSI
B580	E0192
Door bolt	
<ul style="list-style-type: none"> ▪ Deadbolt thrown or retracted by trim unit only ▪ Requires 1 1/2" cross bore prep 	

Outside Inside



Schlage	ANSI
B581	E01112
Door bolt with trim	
<ul style="list-style-type: none"> ▪ Deadbolt thrown or retracted by trim unit only ▪ Blank plate outside ▪ Requires 1 1/2" cross bore prep 	

Outside Inside

