

MNT-RIS-FDC Red Iron Steel Ceiling Support Kit for FLEXIDOME cameras

www.boschsecurity.com



BOSCH

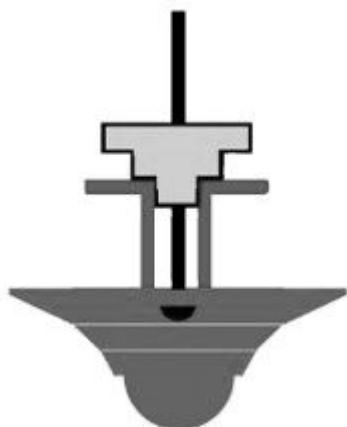
Invented for life



- ▶ Allows mounting of FLEXIDOME cameras onto 2 and 4 inch "red iron" steel ceiling joist
- ▶ For use with all FLEXIDOME IP in-ceiling cameras

This ceiling support kits allows installation of a FLEXIDOME camera onto red iron steel. When used with MNT-ICP-FDC, it allows installation of FLEXIDOME IP in-ceiling cameras (2000, 4000, 5000, 7000 families in suspension ceiling.

Installation/configuration notes



Example: MNT-RIS-FDC installed on 2" red iron



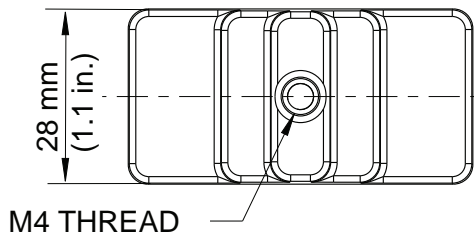
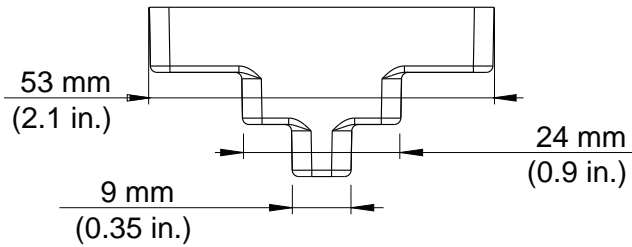
Example: MNT-RIS-FDC installed on 4" red iron

Parts included

2	MNT-RIS-FDC
2	Screws, 127 mm (5 in.)
2	Screws, 78 mm (3 in.)
2	M4 x 14 washers
1	Quick Installation Guide

Technical specifications

Dimensions	53 mm x 28 mm (2.1 in. x 1.1 in.)
Weight	0.055 kg (0.12 lb)
Construction Material	Plastic
Standard Color / Finish	Off-white



Ordering information

MNT-RIS-FDC Red Iron Steel Ceiling Support Kit for FLEXIDOME cameras

Open web steel joist (red iron) ceiling support kit for all FLEXIDOME IP series cameras; designed for 2-inch and 4-inch joist

Order number **MNT-RIS-FDC**

Represented by:

Europe, Middle East, Africa:
 Bosch Security Systems B.V.
 P.O. Box 80002
 5600 JB Eindhoven, The Netherlands
 Phone: + 31 40 2577 284
 emea.securitysystems@bosch.com
 emea.boschsecurity.com

Germany:
 Bosch Sicherheitssysteme GmbH
 Robert-Bosch-Ring 5
 85630 Grasbrunn
 Germany
 www.boschsecurity.com

North America:
 Bosch Security Systems, Inc.
 130 Perinton Parkway
 Fairport, New York, 14450, USA
 Phone: +1 800 289 0096
 Fax: +1 585 223 9180
 onlinehelp@us.bosch.com
 www.boschsecurity.us

Asia-Pacific:
 Robert Bosch (SEA) Pte Ltd, Security Systems
 11 Bishan Street 21
 Singapore 573943
 Phone: +65 6571 2808
 Fax: +65 6571 2699
 apr.securitysystems@bosch.com
 www.boschsecurity.asia