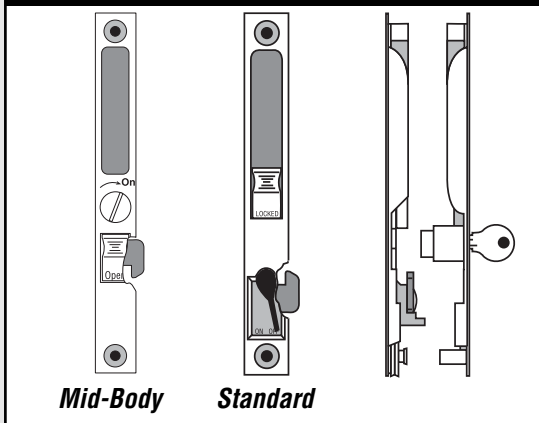


The following pages offer
a comprehensive selection of:

Flush Mount HANDLE SETS

Hook Locations



141638 (Black)
14420 (Chrome)

**Standard
Hook**

Handle Set

Contents: 1 inside latch with deluxe wood pull; 1 outside pull; 1 keeper; installation fasteners; **4 hook assortment**; 1 locking cylinder with 2 keys.

Description: Diecast construction fits most popular flush lock cut-outs; comes complete with keyed cylinder lock; **reversible** for left or right hand; complete with 4 different hook lengths.

You may also wish to stock this related parts: **141640, 141639, 14436, 141688, 141975, 14416, 141388, 142029, 14504, 14418, 141389, 152495, 152500.**

141640 (Black - Keyed)
141639 (Black - Non-keyed)
142370 (White - Keyed)

**Standard
Hook**

Handle Set

Contents: 1 inside latch; 1 outside pull; with (locking cylinder) and **4 hook assortment**; 1 keeper; installation fasteners.

Description: Diecast construction fits flush lock cut-outs; **reversible** latch; complete with keeper; same as 141638 without wood pull.

You may also wish to stock these related parts: **141642, 141688, 141388, 142029, 14418, 142495.**

14903 (Keyed)
14902 (Non-keyed)

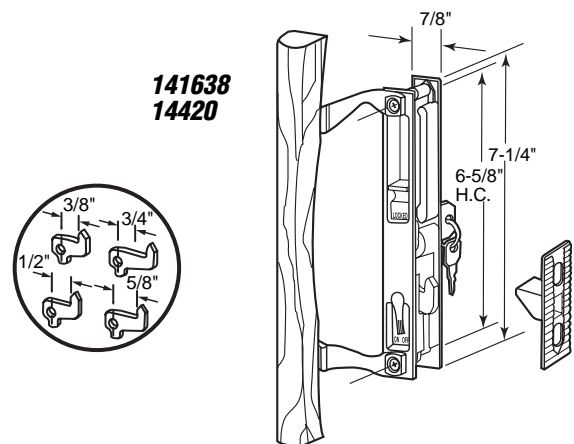
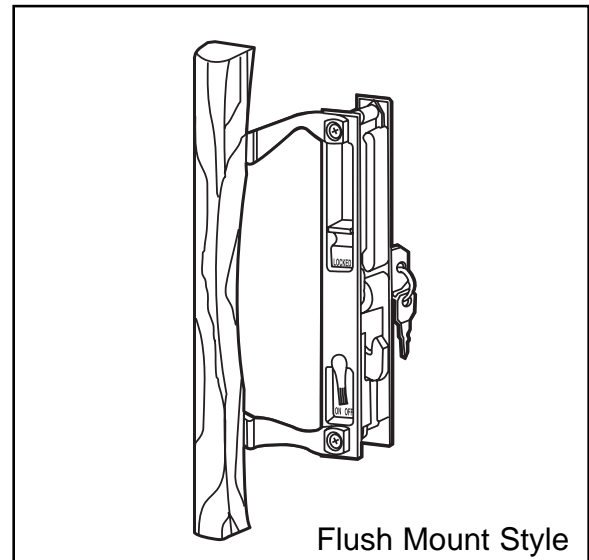
**Unique
Hook**

Handle Set (Chrome)

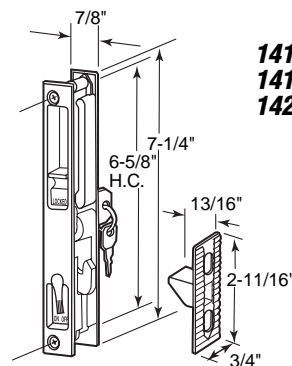
Contents: 1 inside latch and pull; 1 outside latch; (1 locking cylinder); 1 set installation fasteners.

Description: Diecast construction; has push button activator with **diecast** hook; nite latch feature; fits on **Crossly** doors.

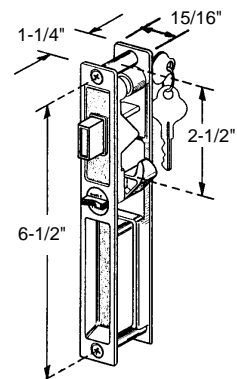
You may also wish to stock this related parts: **152491.**



**141638
14420**



**141640
141639
142370**



**14903
14902**