



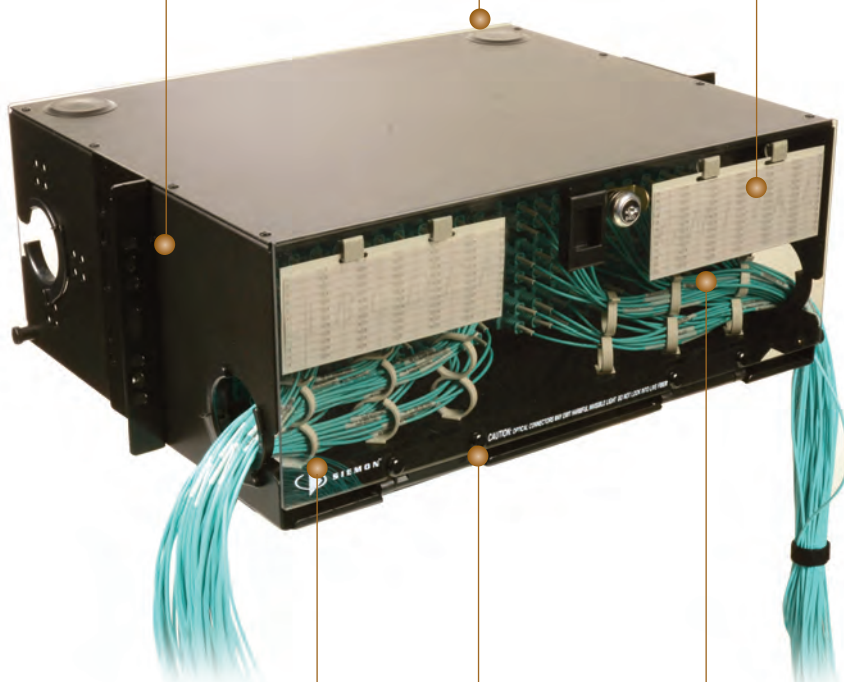
# Rack Mount Interconnect Center (RIC3)

The RIC3 provides the best overall value for exceptional fiber management. The RIC3 enclosure offers superior fiber density without sacrificing fiber protection and accessibility. Features include a fully removable tray, improved labeling, standard front and rear door locks, and single-finger door latches. With superior cable management, port identification, fiber accessibility and security, the RIC3 is the best way to protect mission critical fiber connections.

**Superior Design** — Top and bottom access holes located at the rear of the enclosure allow fibers to be routed between tandem enclosures without having to run fibers outside of the enclosure

**Complete Access** — Management tray has a positive stop in both front and rear working positions providing complete access for moving, adding, changing, or cleaning of fiber connections

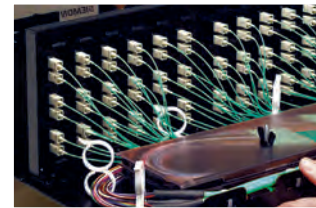
**Enhanced Labeling** — Label virtually any port configuration with our hinged labels. The labels hang on the front door for improved visibility. When the door is opened, labels flip down allowing ready viewing of the label and corresponding ports



**Rotating Grommets** — Patented rotating grommets facilitate loading and retention of jumpers and fiber while minimising microbending stress when using the sliding tray

**Quick-Release Hinges** — Spring loaded quick-release hinges enable easy opening and removal of front and rear doors for complete access to fiber connections

**Maximum Capacity** — The RIC3 enables a maximum amount of fibers to be patched or patched and spliced in a 2, 3, and 4U enclosure without compromising accessibility. This allows more efficient utilisation of rack space



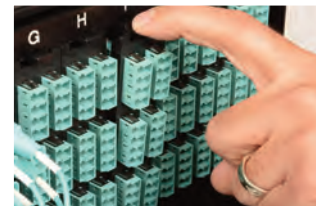
## Removable Tray

The RIC3 cable management tray is fixed in place, but can be removed from the front or rear of the enclosure and moved to a work table for greater convenience.



## Latching and Locking

The RIC3 features a single-finger latch on both front and rear doors. Front and rear doors include a lock for added security.



## Quick-Pack® Adapter Plates

Siemon Quick-Pack adapter plates can be inserted or removed with a single-finger latch for quick and easy access to fiber connections.





Rack Mount Interconnect Center (RIC3)

Siemon RIC3 enclosures are designed for enhanced fiber management and ease of use. They are compatible with an array of Siemon fiber Quick-Pack® and MTP adapter plates for your choice of fiber adapters and port density.



**Part #**                      **Description**  
RIC3-24-01 ..... 24- to 96-fiber (384 fibers with MTP adapter plates)  
Rack Mount Interconnect Center, accepts (4)  
Quick-Pack adapter plates, 2U, black  
*height: 86.6mm (3.4 in.)*  
*width: 432mm (17.0 in.)*  
*depth: 380mm (15.0 in)*



**Part #**                      **Description**  
RIC3-36-01 ..... 36- to 144-fiber (up to 576 fibers with MTP adapter plates)  
Rack Mount Interconnect Center, accepts (6)  
Quick-Pack adapter plates, 2U, black  
*height: 86.6mm (3.4 in.)*  
*width: 432mm (17.0 in.)*  
*depth: 380mm (15.0 in)*



RIC3-48-01 ..... 48- to 192-fiber (up to 768 fibers with MTP adapter plates)  
Rack Mount Interconnect Center, accepts (8)  
Quick-Pack adapter plates, 3U, black  
*height: 133mm (5.2 in.)*  
*width: 432mm (17.0 in.)*  
*depth: 380mm (15.0 in)*



RIC3-72-01 ..... 72- to 288-fiber (up to 1152 fibers with MTP adapter plates)  
Rack Mount Interconnect Center, accepts (2)  
Quick-Pack adapter plates, 4U, black  
*height: 178mm (7.0 in.)*  
*width: 432mm (17.0 in.)*  
*depth: 380mm (15.0 in)*

*Note: 1U = 44.5mm (1.75 in.)*  
*Note: All RIC products include laser-printable labels\*, cable ties, rack-mounting hardware, and pre-installed fiber management clips.*  
*\*Visit [www.siemon.com](http://www.siemon.com) for labelling software.*

MAXIMUM RIC3 FIBER CAPACITY

# Fibers per Quick-Pack	Adapter Options	RIC24	RIC36	RIC48	RIC72
6	ST, SC	24	36	48	72
8	ST, SC	32	48	64	96
12	ST, SC, LC	48	72	96	144
16	LC	64	96	128	192
24	LC	96	144	192	288
96	MTP	384	567	768	1152

MAXIMUM SPLICING CAPACITY

Splice Type	RIC24	RIC36	RIC48	RIC72
Fusion	96	96	96	144





Quick-Pack® Adapter Plates

Siemon's patented Quick-Pack adapter plates feature an integrated latch, which provides single-finger access to fiber even in fully populated enclosures.

XGLO® & LightSystem®

RIC-F-SC6-01.....  
3 duplex SC adapters  
(6 fibers)



RIC-F-SC8-01.....  
4 duplex SC adapters  
(8 fibers)



RIC-F-SC12-01.....  
6 duplex SC adapters  
(12 fibers)



RIC-F-SCQ6-01.....  
3 duplex SC adapters  
(6 fibers), aqua adapters  
(not shown)

RIC-F-SCQ8-01.....  
4 duplex SC adapters  
(8 fibers), aqua adapters  
(not shown)

RIC-F-SCQ12-01.....  
6 duplex SC adapters  
(12 fibers), aqua adapters  
(not shown)

RIC-F-SCE6-01.....  
3 duplex SC adapters  
(6 fibers), erika violet adapters  
(not shown)

RIC-F-SCE8-01.....  
4 duplex SC adapters  
(8 fibers), erika violet adapters  
(not shown)

RIC-F-SCE12-01.....  
6 duplex SC adapters  
(12 fibers), erika violet adapters  
(not shown)

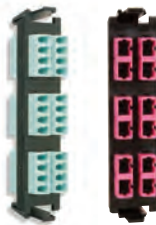
RIC-F-LC12-01C.....  
3 quad LC adapters  
(12 fibers), beige adapters  
(not shown)



RIC-F-LC16-01C.....  
4 quad LC adapters  
(16 fibers), beige adapters  
(not shown)



RIC-F-LC24-01C.....  
6 quad LC adapters  
(24 fibers), beige adapters  
(not shown)



RIC-F-LCU12-01C.....  
3 quad LC adapters  
(12 fibers), blue adapters  
(not shown)

RIC-F-LCU16-01C.....  
4 quad LC adapters  
(16 fibers), blue adapters  
(not shown)

RIC-F-LCU24-01C.....  
6 quad LC adapters  
(24 fibers), blue adapters  
(not shown)

RIC-F-LCQ12-01C.....  
3 quad LC adapters  
(12 fibers), aqua adapters

RIC-F-LCQ16-01C.....  
4 quad LC adapters  
(16 fibers), aqua adapters

RIC-F-LCQ24-01C.....  
6 quad LC adapters  
(24 fibers), aqua adapters

RIC-F-LCE12-01C.....  
3 quad LC adapters  
(12 fibers), erika violet adapters

RIC-F-LCE16-01C.....  
4 quad LC adapters  
(16 fibers), erika violet adapters

RIC-F-LCE24-01C.....  
6 quad LC adapters  
(24 fibers), erika violet adapters

LightSystem®

RIC-F-SA6-01.....  
3 duplex ST adapters  
(6 fibers)



RIC-F-SA8-01.....  
4 duplex ST adapters  
(8 fibers)



RIC-F-SA12-01.....  
6 duplex ST adapters  
(12 fibers)  
*Only recommended for  
push-pull ST connectors  
due to limited access*



RIC-F-BLNK-01.....  
Blank adapter plate



Each adapter plate with icon pockets includes red, blue, black, and clear icons with paper labels. All SC and ST adapters are "universal" to support Multimode and Singlemode.

Fiber Management Tray (FMT)

The Siemon Fiber Management Tray (FMT) is an economical solution for managing fiber cable slack and splice trays. The management tray has been designed to easily retrofit any standard 1 RMS CT® or MAX® Series Patch Panel and can organise up to 32 fibers. The tray is only 254mm deep, allowing it to readily fit into cabinet enclosures. Each enclosure can accept up to two fiber splice trays.

Part #	Description	RMS
CT-FMT-16.....	Fiber tray for 1U CT or MAX Panel.....	1

Note: 1U = 44.5mm





*Because we continuously improve our products, Siemon reserves the right to change specifications and availability without prior notice.*

**Worldwide Headquarters  
North America**  
Watertown, CT USA  
Phone (1) 860 945 4200

**Regional Headquarters  
Europe Russia Africa**  
Chertsy, Surrey, England  
Phone (44) 0 1932 571771

**Regional Headquarters  
China**  
Shanghai, P.R. China  
Phone (86) 215385 0303

**Regional Headquarters  
Latin America**  
Bogota, Colombia  
Phone (571) 657 1950/51/52

**Regional Headquarters  
India Middle East**  
Dubai, United Arab Emirates  
Phone (971) 4 3689743

**Regional Headquarters  
Asia Pacific**  
Sydney, Australia  
Phone (61) 2 8977 7500

**Siemon Interconnect Solutions  
Watertown, CT USA**  
Phone (1) 860 945 4213 US  
[www.siemon.com/SIS](http://www.siemon.com/SIS)

