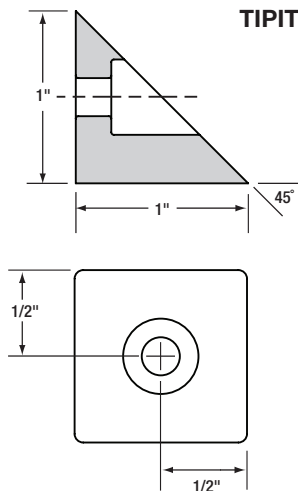
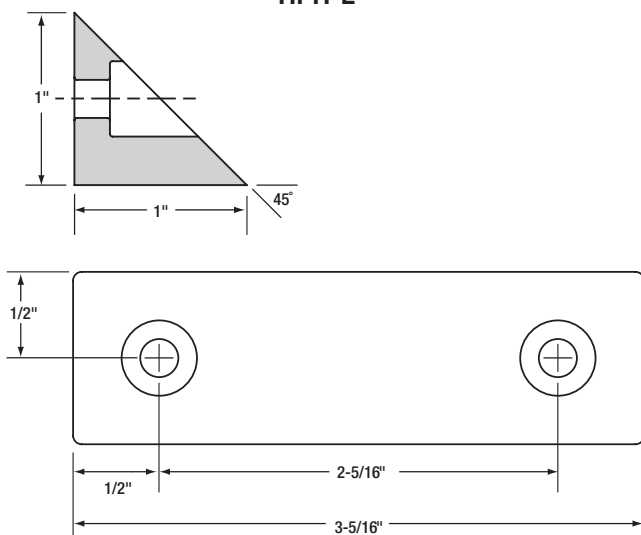


TIPIT® Ligature-Resistant Hospital Tip

TIPIT C

TIPIT L


APPLICATION: Patented SELECT TIPIT® Hospital Tips work with a new or an existing continuous hinge to meet institutional requirements for preventing objects from being hung from the hinge (detering people from harming themselves).

INSTALLATION: SELECT TIPIT Hospital Tips are mounted on the surface of the frame, above continuous hinges.

MATERIAL: Durable, high-tech polymer.

SIZE: TIPIT C = 1" x 1" x 1". TIPIT L = 3-5/16" x 1" x 1".

COLOR: Gray (for use with clear anodized hinges) or Black (for use with dark bronze anodized hinges).

FASTENERS: Includes #10 Torx® SST security screw(s).

ORDER: If ordering only the TIPIT for a hinge already in the field, simply specify TIPIT C or TIPIT L, then the color. If ordering the TIPIT with a hinge, specify the full description of the hinge first, TIPIT C or TIPIT L as a suffix, then the color. Then specify TIPIT PREP as another suffix if necessary. See details below.

■ Specify TIPIT C for use with the SL11, SL14, SL18, SL24, SL26, SL27, SL31, SL38, SL44, SL48 and most brands of concealed continuous geared hinges (excluding the SL71 and other safety-type concealed hinges). Includes small TIPIT and (1) #10 Torx® security screw.

■ Specify TIPIT L for use with the SL21, SL41, SL53, SL54, SL57, SL71 and most brands of full surface, half surface, swing clear and concealed safety hinges. Includes large TIPIT and (4) #10 Torx® security screws.

■ Hinge preparation for use of TIPIT L with SL21, SL53, SL54 and SL57 hinges: Specify TIPIT PREP for factory preparation of door leaf covers for field installation of TIPIT L.

NOTE: Order TIPIT L separately.

NOTE: Not necessary for SL41 swing clear or SL71 safety hinges.

TIPIT® SCREW COUNT

| TIPIT L | TIPIT C |
|---------|---------|
| 4 | 1 |

SPECIFICATIONS

TIPIT® Ligature-Resistant Hospital Tip



Use for existing entrances or on new geared hinges

Make rooms safer and meet legal requirements by retrofitting doors with the patented SELECT TIPIT® hospital tip. Deters patients or inmates from harming themselves by hanging objects from the hinge.

For use in:

- Hospitals
- Correctional facilities
- Schools
- Other institutions

The SELECT TIPIT hospital tip works with our geared hinges (excluding SL40, SL60 and SL62) to meet institutional requirements for preventing objects from being hung from the hinge.

Order the SELECT TIPIT hospital tip with any new SELECT geared hinge (excluding SL40, SL60 and SL62). Fits most other brands of full surface, half surface, concealed or swing clear geared continuous hinges (new or retrofit applications).

- Prevents objects from being attached to top of hinge (ligature-resistant)
- Made from durable, high-tech polymer
- Securely fastens to door frame header
- Works for retrofit or new applications
- Fits most other brands of geared continuous hinges
- Includes #10 Torx® SST security screw(s)



Dark bronze anodized full surface hinge with black TIPIT



Dark bronze anodized concealed hinge with black TIPIT



Clear anodized full surface hinge with gray TIPIT



Clear anodized concealed hinge with gray TIPIT