

PRO-Strike™ Punchdown Tool

Precise terminations.
Maximum performance.
Ergonomic handle.



The new PRO-Strike Punchdown Tool combines rugged design, an ergonomic comfort grip handle and enhanced functions. The primary tool for all telecom and datacom installers working with 110, 66, Krone and BIX™ style cross connects. This professional tool will provide precise, repeatable and reliable terminations that helps ensure installations pass certification and your peace-of-mind.

- Terminate and cut Cat3/5/5e/6 cables
- Spring loaded for fast, low effort wire seating and termination
- Bayonet style (twist & lock) blade retention socket is compatible with industry standard tools and blades
- New built-in hook – feeds or removes wire
- New multi-use spudger – for screwdriver, IDC insert tool or to clean debris
- 110, 66, 630, Krone and BIX™ style interchangeable blades
- Color coded yellow on the cut side of the tool per industry standard
- Adjustable low and high force impact settings are precisely controlled to meet the industry standard 8762D spec
- Will not damage sensitive circuitry
- Spare blade storage compartment in the handle

Application

- Terminate and trim wires in 66, 110, Krone and BIX™ style cross connect blocks
- Terminate and trim wires in 110 & 630 style wall jack modules

Technical Data

- Dimensions: 6" x 1.5" x 1" (152 x 38 x 25mm)
- Weight: 5.7oz (162g)

See reverse for more information

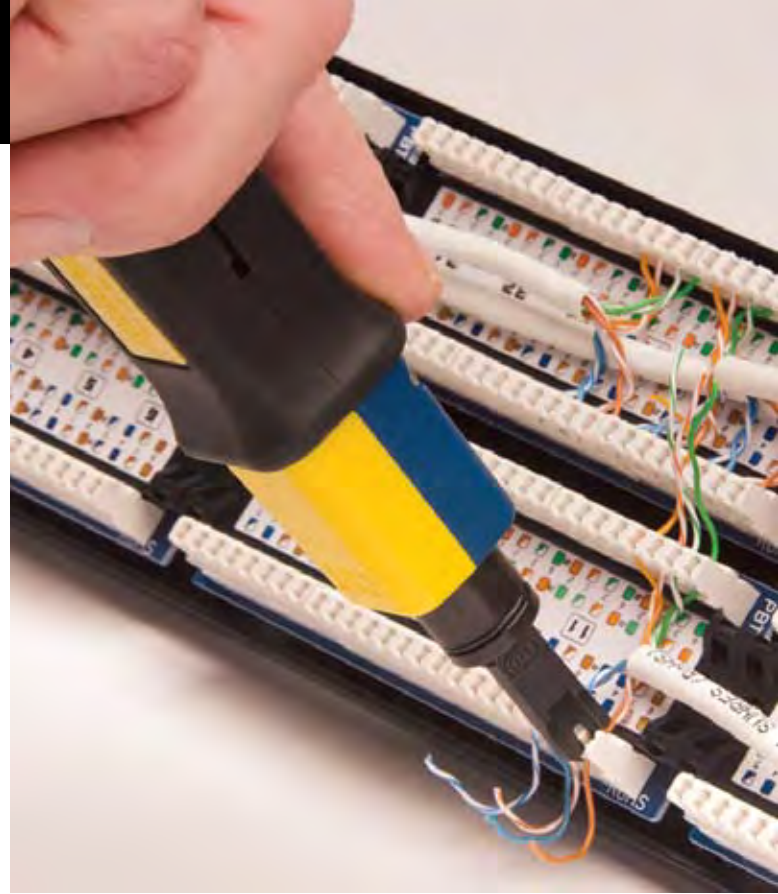
Phone: 800.749.5783
Fax: 800.749.5784

806 Calle Plano
Camarillo, CA 93012
www.platinumtools.com

We Make Connections EZ!

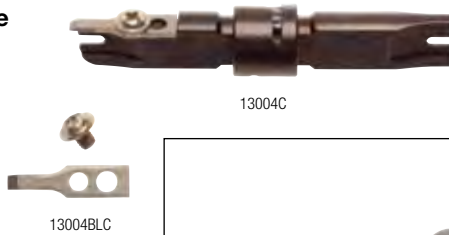
Punchdown Blades

Quality you demand. All blades and accessories are manufactured from high-carbon, tool grade steel and heat treated for durability.



110 EZ-Data Cut Blade

Easily replace cutting knives.



Bayonet style (twist & lock) blade retention socket is compatible with industry standard tools and blades.



Ordering Information:

| Tool/Blade Combinations | P/N | UPC CODE |
|---|--------|--------------|
| PRO-Strike Punchdown Tool, handle only | 13150C | 849160006466 |
| PRO-Strike Punchdown Tool, w/66 blade | 13155C | 849160006473 |
| PRO-Strike Punchdown Tool, w/110 blade | 13156C | 849160006480 |
| PRO-Strike Punchdown Tool, w/66 & 110 blades | 13157C | 849160006497 |
| PRO-Strike Punchdown Tool, w/66/110 Combo blade | 13159C | 849160006503 |

Blades and Accessories

| | | |
|---|-----------|--------------|
| 66 Style blade | 13001C | 899740000193 |
| 110 Style blade | 13002C | 899740000209 |
| 630 Style blade | 13003C | 899740000216 |
| 110 Style EZ Data Cut blade | 13004C | 899740000704 |
| 110 Style EZ Data Cut blade replacement knives (3 pk) | 13004BL-C | 899740001299 |
| 66/110 Combo blade | 13021C | 899740001305 |
| Punchdown Tool Extension | 13022C | 899740001343 |
| BIX™ Style blade | 13023C | 899740001459 |
| Krone Style blade | 13024C | 899740001466 |

PLATINUM TOOLS®

Phone: 800.749.5783

Fax: 800.749.5784

806 Calle Plano
Camarillo, CA 93012

www.platinumtools.com

We Make Connections EZ!