

SFIC SERIES - SHACKLELESS

SMALL FORMAT INTERCHANGEABLE CORE



PACLOCK's unique patented solid body, Small Format Interchangeable Core (SFIC) Shackleless hockey-puck padlocks accept 5, 6, and 7-pin cores (cores not included). With the largest variety of padlock styles, shackle options and shackleless padlocks to choose from, PACLOCK leads the way for your SFIC security needs.

All of the solid padlock bodies featured in this catalog are designed, precision CNC'd, assembled, quality tested and approved in the USA. The steel locks are heat treated and nickel plated in the USA. The brass locks are nickel plated in the USA. And the aluminum locks are anodized in the USA. Your support of PACLOCK supports a variety of American businesses.



"2170-IC2" Series

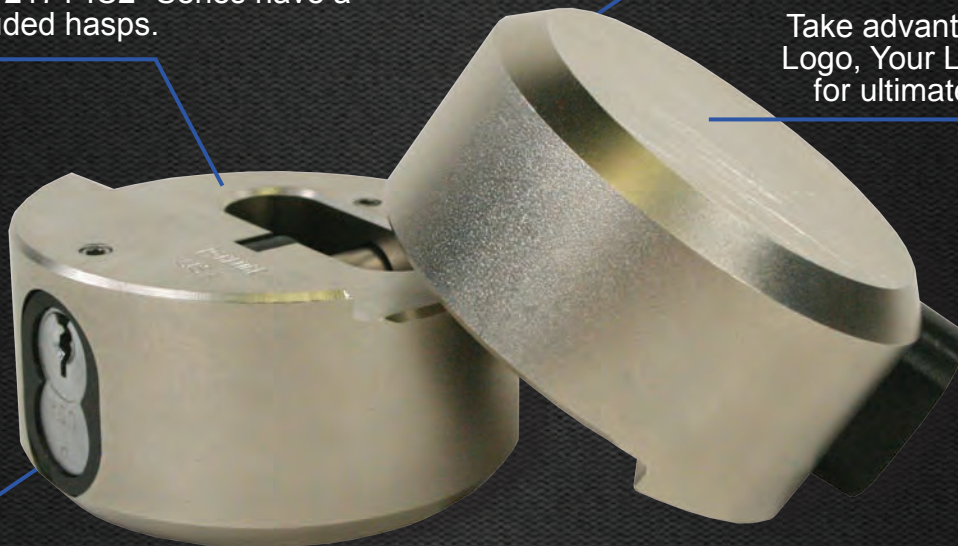


U.S. Patent 8,776,557

The "400-IC2" Series has a stepped back cut-out for bar-style hasps. The "2170-IC2", "2170A-IC2" and "2171-IC2" Series have a flat back for shrouded hasps.

The "2170-IC2" Series available in aluminum and hardened steel bodies. The "400-IC2" and "2171-IC2" Series available in hardened steel.

Take advantage of the "Your Logo, Your Locks"™ program for ultimate customization.



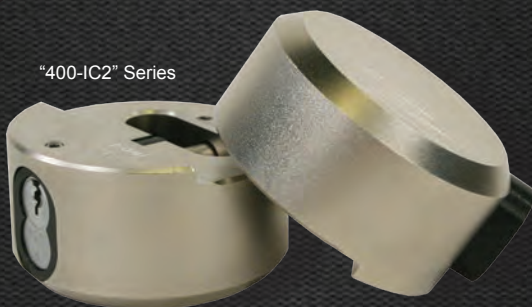
Compatible with cores from Medeco®, Arrow®, Best® and all other SFIC manufacturers. Core not included.

"400-IC2" Hardened Steel Series

"400-IC2"

- 2-7/8" Body Diameter
- Hardened Solid Steel Body
- Electroless Nickel Plated
- Hidden Shackle Design
- Patented Design
- Stepped Back Cut-out Works with Bar-style Hasps
- "Your Logo, Your Locks"™ Engraving Available on Black Powder Coated Hardened Steel Lock

"400-IC2" Series



U.S. Patent 8,776,557

"2170-IC2"

- 2-7/8" Body Diameter
- Hardened Solid Steel Body
- Electroless Nickel Plated
- Hidden Shackle Design
- Patented Design
- Works with Shrouded Hasps
- "Your Logo, Your Locks"™ Engraving Available on Black Powder Coated Hardened Steel Lock

"2170A-IC2" Series



"2170-IC2" Series

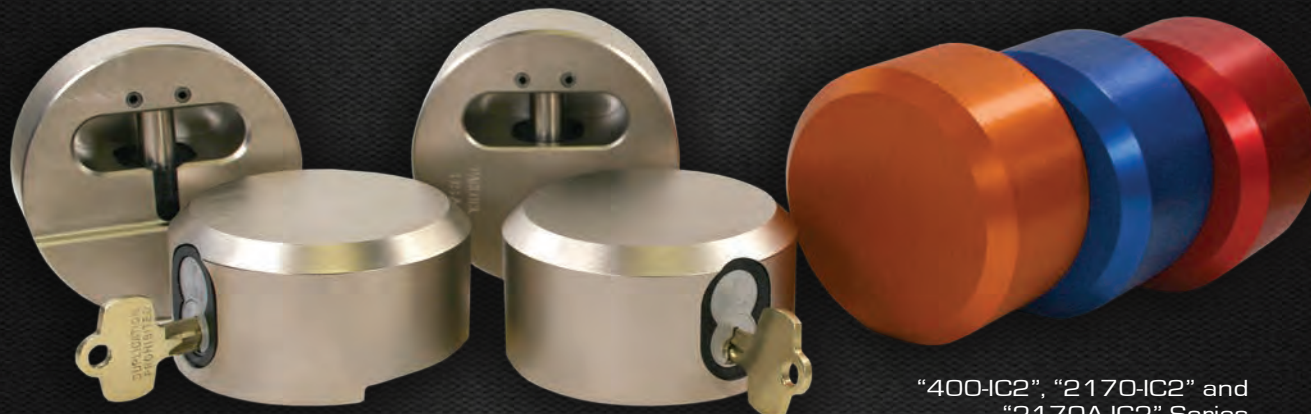
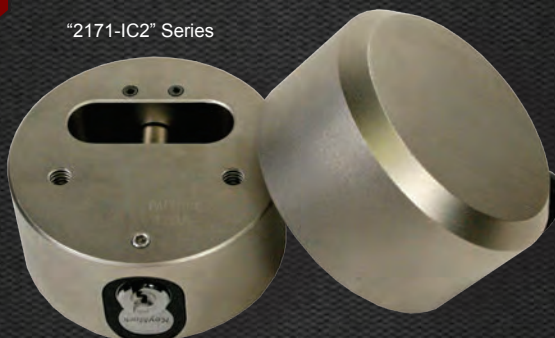
"2170A-IC2"

- 2-7/8" Body Diameter
- Aircraft Grade Aluminum Body
- Mil Spec Type II Anodized
- Ten Anodized Colors Available
- Hidden Shackle Design
- Patented Design
- Works with Shrouded Hasps
- "Your Logo, Your Locks"™ Engraving Available

"2171-IC2"

- 2-7/8" Body Diameter
- Hardened Solid Steel Body
- Electroless Nickel Plated
- Hidden Shackle Design
- Patented Design
- Flat Back Design with 2 Tapped Holes Works with Shrouded Hasps
- "Your Logo, Your Locks"™ Engraving Available on Black Powder Coated Hardened Steel Lock

"2171-IC2" Series



"400-IC2", "2170-IC2" and
"2170A-IC2" Series

* Cores not included