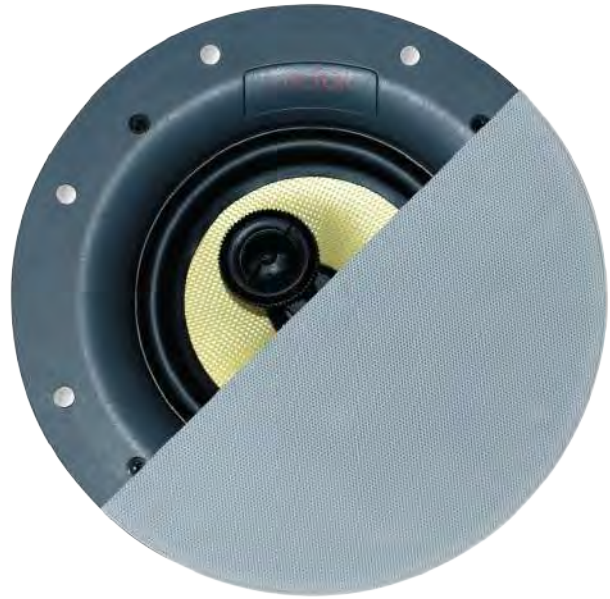


Features:

High power handling 6.5" stereo speaker system
New trimless magnetic grille
Smooth-wide frequency response
6.5 inch woven Kevlar woofer cone
Dual voice coils accepts left & right signals
Rubber woofer surround
20 oz ferrite woofer magnet
Dual 1 inch aim-able silk dome tweeters
Neodymium tweeter magnets
15 degree opposing tweeter angles
Minimal tweeter cancellation
Dual crossovers with air core inductors
PTZ tweeter protection with automatic reset
4 heavy duty "Tough-Cam" mounting clamps.
Gold plated 12awg binding posts
Complete rough in bracket included (RI-675)
Paint able to match any decor
Sold as each
Master carton 2pcs
10 year warranty

**Specifications:**

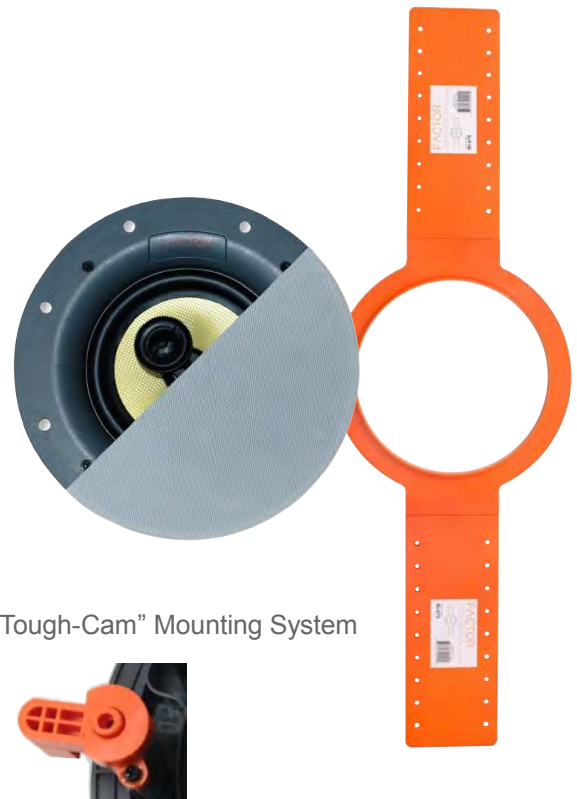
Diameter Woofer 6.5" (165.1mm) woven Kevlar
Voice coils - Dual edge wound copper
Diameter Tweeters 1" (25.4mm) silk dome aim-able
Power Handling 120 watts (peak)
Impedance 8 ohms left/right (nominal)
Frequency Response 40Hz - 22kHz (± 10 dB)
Dispersion 110 °
Sensitivity 92dB (1W 1M) Average

Included:

RI-675 rough-in bracket
Cutout template
Paint shield

Dimensions:

Dimensions Overall 10.125" (250mm)
Cutout Dimensions Speaker 8.25" (210mm)
Cutout Dimensions RI Bracket 8.5" (216mm)
Depth 3.5" (90mm)
Shipping Weight 14lbs (6.3kg) master carton 2 pcs
Shipping dimensions 14x12x13" master carton 2 pcs



New "Tough-Cam" Mounting System