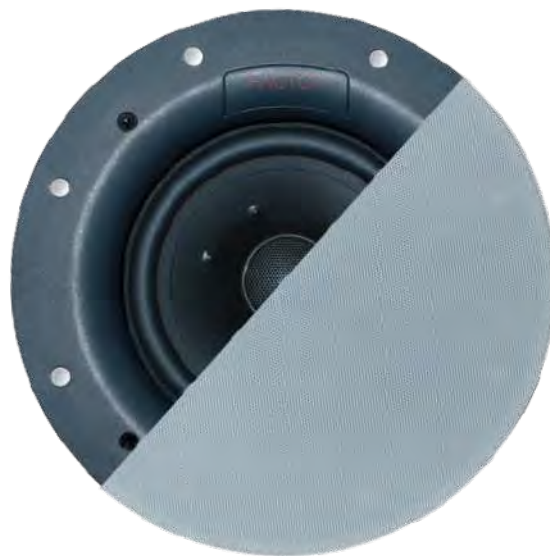


### Features:

High power handling 6.5" in-ceiling speaker system  
Trimless magnetic grille  
Smooth-wide frequency response  
6.5 inch polypropylene woofer cone  
Rubber woofer surround  
20 oz ferrite woofer magnet  
1 inch aim-able silk dome tweeter  
Neodymium tweeter magnet  
High quality crossover with air core inductor  
White acoustically lined grille .  
4 heavy duty "Tough Cam" mounting clamps.  
Gold plated 12awg binding posts  
Complete rough in bracket included (RI-675)  
Also available in 25/70 volt (E-675X-TL, X-TL20, X-TL30)  
Sold as pairs  
Master carton 2 pcs  
10 year warranty



### Specifications:

Diameter Woofer 6.5" (165.1mm) polypropylene  
Diameter Tweeter 1" (25.4mm) silk dome aim-able  
Power Handling 125 watts (peak)  
Impedance 8 ohms (nominal)  
Frequency Response 40Hz - 20kHz ( $\pm 10$ dB)  
Dispersion 110 °  
Sensitivity 92dB (1W 1M) Average

### Included:

RI-675 rough-in bracket  
Cutout template  
Paint shield

### Dimensions:

Dimensions Overall 10.125" (250mm)  
Cutout Dimensions Speaker 8.25" (210mm)  
Cutout Dimensions RI Bracket 8.5" (216mm)  
Depth 3.5" (90mm)  
Shipping Weight 13lbs (5.9kg)  
Shipping dimensions 14x12x13"



New "Tough-Cam" Mounting System