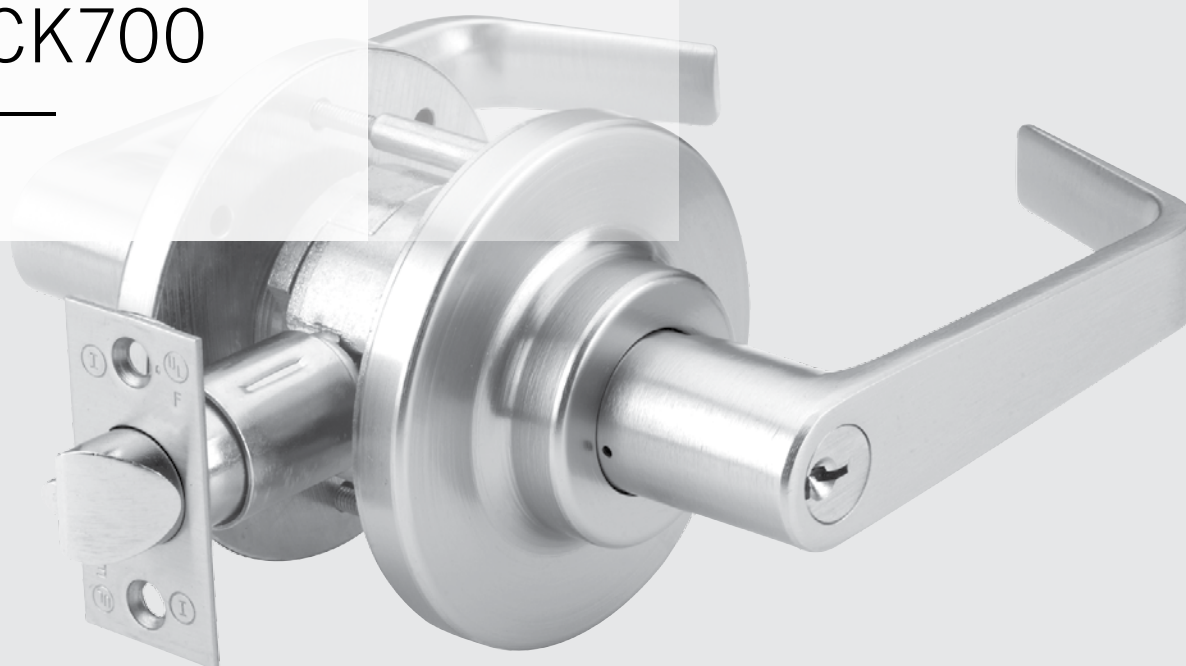
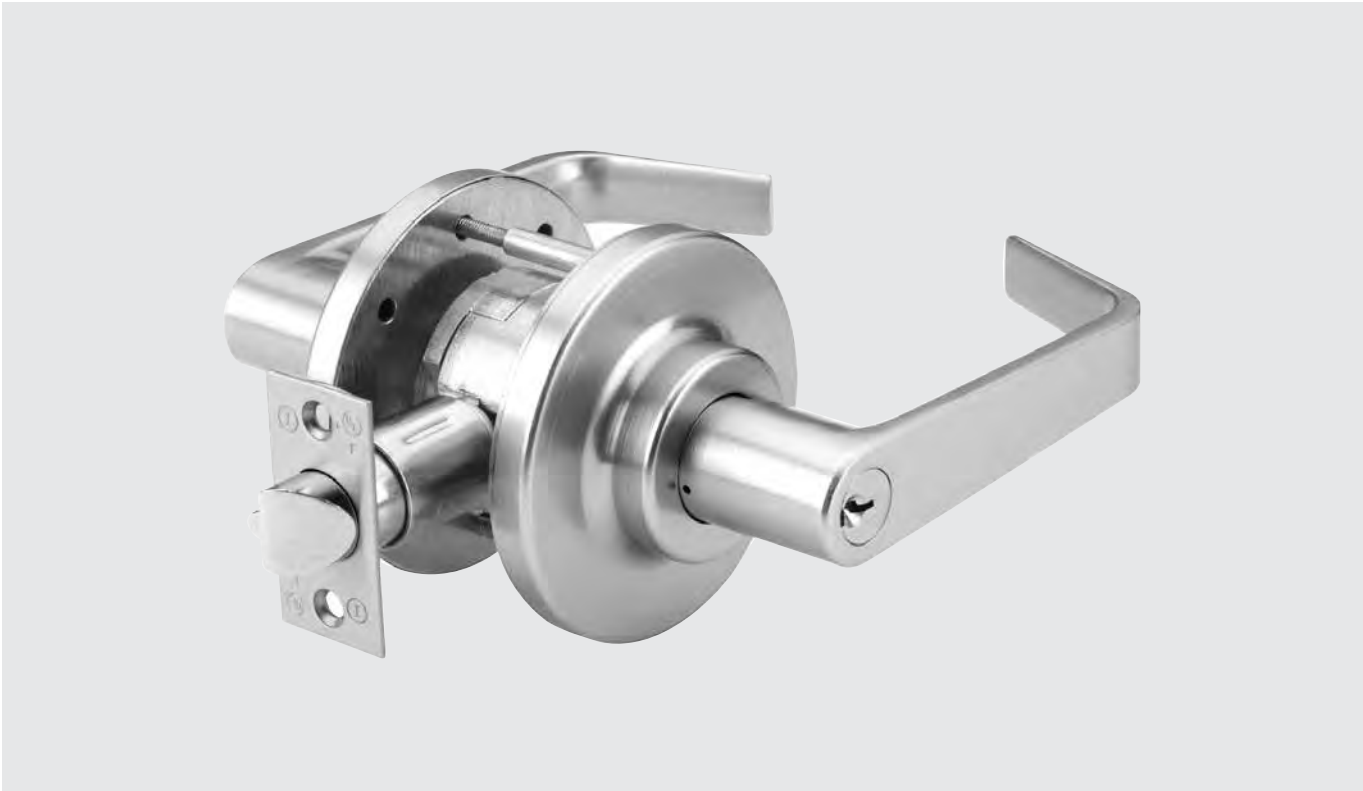


CL700
CK700

—



Grade 2 Cylindrical Locksets



CONTENTS

CL/CK700 Grade 2 Cylindrical Locksets	Features/Technical Details/Specifications	3
Ordering Guide	Locks	4
	Keyways	5
Trim Options	C700 Levers/Knob	5
Functions	Available Functions	6
Lock Options	1/2" Throw Latch Bolt	7
	4-7/8" Strike	8
	T-Strike	8
	Full Lip Strike	8

DORMA USA quality and environmental management systems in Reamstown, PA and Steeleville, IL are certified to ISO 9001:2008 and ISO 14001:2004.



LR Lever



LC Lever



LG Lever



KB Knob

CL/CK700 – GRADE 2 CYLINDRICAL LOCKSETS

Exceptional security, enhanced aesthetics, and rugged dependability.

These premium locks are built with a high performance cylindrical chassis for all applications where ANSI/BHMA A156.2 Series 4000 Grade 2 products are required. To meet the aesthetic needs of your project, these versatile locks are available in a range of trim designs.

Features

- DORMA CL/CK700 Series locks feature advanced design concepts for extreme reliability and are manufactured with the finest materials for exceptional durability.
- CL/CK700 Series locks are easy to install in both wood and hollow metal doors with ANSI/BHMA Standard A156.115 preparations for cylindrical locks.
- CL700 Series lever handle locks include special spring assemblies designed to hold the levers in the correct position.
- CL700 Series lever locks are through-bolted for additional strength and reliability.

- CL/CK700 Series lever locks are easily adjustable to accommodate doors from 1-3/8"–1-3/4" thick without spacers or special tools.

Recommended Applications

- Hotels
- Apartments
- Churches
- Municipal Buildings
- Retail Complexes
- Offices

Technical Details

- Non-handed for simple installation.
- Auxiliary deadlocking latch bolt.
- Lock chassis constructed of steel and stainless steel components for superior strength and corrosion resistance.

Certifications

- ANSI/BHMA A156.2 Grade 2 certified.
- Meets A117.1 accessibility code and ADA requirements for barrier-free accessibility.



- UL listed 3 hour fire rated. Locks with 1/2" throw latch bolts are listed for A label and lesser class doors, 4'0" × 8'0" maximum per leaf.



Cylinders and Keying

- Unless otherwise specified, cylinders will be provided in DORMA standard keyway with two (2) nickel silver keys.
- Optional patented key system available.
- Refer to separate **DORMA Price List** for full details and options such as master keying, retrofit cylinders and keyways, and small format and full size interchangeable cores.

Finishes

- Brass: 605 (Bright), or 606¹ (Satin).
- Bronze¹: 612 (Satin) or 613 (Dark Oxidized Satin).
- Chrome¹: 625 (Bright) or 626 (Satin).
- Stainless²: 630 (Satin).

¹ Available on lever handle locksets only.

² Available on knob locksets only.

Special Finish Notes

ANSI/BHMA A156.18 standards describe 613 Dark Oxidized Satin Bronze finish as a category B finish. B category finishes, "do not match from one alloy or form of material to the next and from one manufacturer to the next." The 613 finish may vary between manufacturers' products and models.

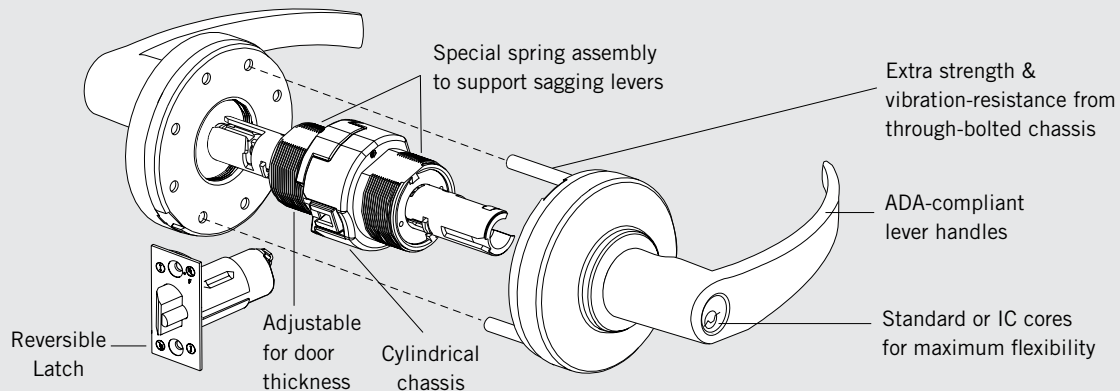
In some instances, for customer convenience, the most appropriate BHMA finish symbols are used to indicate similarity of appearance, regardless of base metal or finishing process. Finishes of latches, strikes, cylinders/cores, and visible mounting screws, though similar in appearance, may differ from the finish of the trim. Finish designations in the 600 numbers are the BHMA (Builders Hardware Manufacturers Association) industry standard.

Security Screws

Torx® tamper-resistant screws are available for all exposed screws. Specify **TX**.

Warranty

For details, refer to **DORMA Limited Warranty** on our website at go.dorma.com/terms.



HOW TO ORDER CL/CK700 SERIES LOCKS

Function

Storeroom — 80

Classroom — 70

Entry — 53

Entry/Office — 50

Privacy, Bedroom or Bath — 40

Patio — 30

Exit/Communicating Passage — 25

Exit — 12

Passage/Closet — 10

Dummy Trim One Side — 01

Cylinder Type

D — Conventional Cylinder

L — Less Cylinder

C — SFIC with Core

J — Less Core SFIC

T — Construction Core SFIC

Finish³

630 — Satin Stainless Knob only

626 — Satin Chrome Levers only

625 — Bright Chrome Levers only

613 — Dark Oxidized Satin Bronze Levers only

612 — Satin Bronze Levers only

606 — Satin Brass Levers only

605 — Bright Brass

Door Thickness

17252 — 1-3/8" – 1-3/4"

134 — 1-3/8" – 1-3/4"

Strike Options²

5001

1316

XXXX

Lip Length²

1316

XXXX

Product Type

Knob Trim — CK

Lever Trim — CL

Lever/Knob Design

Lever — LR

Lever — LC

Lever — LG

Knob — KB

Rose Design¹

B — 3" Dia. Rose

E — 3-7/16" Dia. Rose

Security Screws

TX

Product Family

Grade 2 Cylindrical Lockset

CL

7

53

D

LR

E

626

17252

134

5001

1316

XXXX

See Next Page for Keying Options

1. Rose B is applicable to KB design only. Rose E is applicable to LR/LC/LG designs only.

2. Example shows default values. Refer to Lock Options section for full details.

3. For split finishes, specify hand and consult factory.

5. Refer to DORMA Price List for full details.

4 DORMA

HOW TO ORDER KEYWAYS

Standard Keyways

Keying	
OBIT	— O-Bitted
CMK	— Construction Master Keyed
MKD	— Master Keyed
NSK	— Non-Stock Keyed
KA4	— Keyed Alike, Sets of 4
KA2	— Keyed Alike, Sets of 2
KD	— Keyed Different
SC	KD
SC	— Schlage C
SE	— Schlage E
D100	— DORMA SKC
CA	— Corbin 60
CD	— Corbin 59A1
CE	— CorbinRusswin L4
RA	— Russwin 981
RB	— Russwin D1
GA	— Sargent LA
SF	— Schlage F
WA	— Weiser E
YA	— Yale 8
YG	— Yale GA
Keyway	

Retrofit Keyways
Available O-Bitted Only

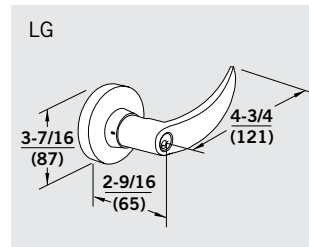
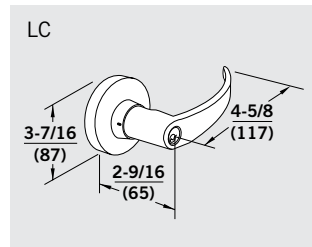
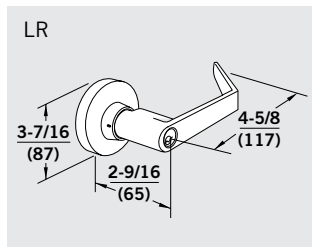
IC Keyways

Keying	
TMP	— Temporary Construction Core
MKD	— Combined (Master Keyed)
BA	MKD
BA	— Best A
BB	— Best B
BC	— Best C
BD	— Best D
BE	— Best E
BF	— Best F
BG	— Best G
BH	— Best H
BJ	— Best J
BK	— Best K
BL	— Best L
BM	— Best M
BQ	— Best Q
D100	— DORMA SKC (7-pin Core only)
BLK	— Black Construction Core
BLU	— Blue Construction Core
GRN	— Green Construction Core
Keyway	

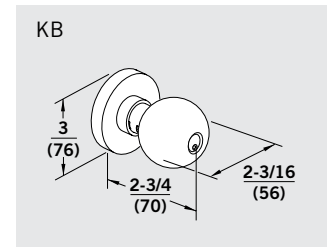
Specify Color If Required
to Match Existing Project

TRIM OPTIONS

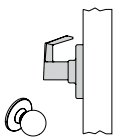
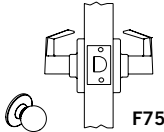
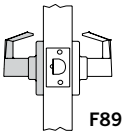
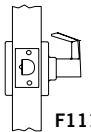
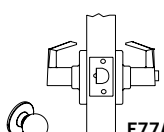
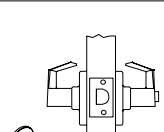
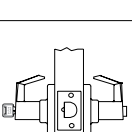
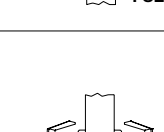
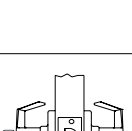
Lever Designs



Knob Design



FUNCTIONS

Function	Series	Outside/Inside	Description
Dummy Trim One Side	CL701 CK701		<ul style="list-style-type: none"> Used as pull or matching trim on pairs of doors. Trim is surface mounted.
Passage/Closet	CL710 CK710		<ul style="list-style-type: none"> Latch bolt operated by trim from either side at all times.
Exit	CL712		<ul style="list-style-type: none"> Deadlocking latch bolt retracted by trim from inside at all times. Outside trim always rigid. Inside trim always unlocked.
Exit/ Communicating Passage	CL725		<ul style="list-style-type: none"> Deadlocking latch bolt operated by inside trim. Blank plate outside. Minimum clearance 1" on single doors and 2" between double doors.
Patio	CL730 CK730		<ul style="list-style-type: none"> Deadlocking latch bolt operated by trim from either side. Outside trim locked by push button or locking device inside. Outside trim unlocked by inside trim. Outside trim unlocked by closing door. Inside trim always unlocked. Do not use in rooms that have no other entrance.
Privacy, Bedroom or Bath	CL740 CK740		<ul style="list-style-type: none"> Latch bolt operated by trim from either side. Outside trim locked by push button or locking device inside. Outside trim unlocked by emergency release from outside. Outside trim unlocked by inside trim. Outside trim unlocked by closing door. Inside trim always unlocked.
Entry/Office	CL750		<ul style="list-style-type: none"> Deadlocking latch bolt operated by trim from either side, except when outside trim locked by push button inside. Key outside releases push button, unlocking outside trim. Operating inside trim releases push button, unlocking outside trim. Inside trim always operates latch bolt.
Entry	CL753 CK753		<ul style="list-style-type: none"> Deadlocking latch bolt operated by trim from either side, except when outside trim locked by push button inside. Key outside releases push button, unlocking outside trim, except when inside button pushed and turned to keep outside trim locked. Operating inside trim releases push button, unlocking outside trim, except when inside button pushed and turned to keep outside trim locked. Inside button must be turned to unlock outside trim. Inside trim always operates latch bolt.
Classroom	CL770 CK770		<ul style="list-style-type: none"> Deadlocking latch bolt operated by trim from either side, except when outside trim locked by key from outside. When outside trim locked, latch bolt is operated by key in outside trim. When outside trim locked, latch bolt operated by inside trim.