

Product Highlights

Flexible Networking Options

- 8, 24 or 48 x 10/100/1000BASE-T ports
- 2 x SFP or 4 x RJ45/SFP COMBO ports
- PoE+ (802.3at) support on select models

Easy Management

- Multilingual Web UI, compact CLI, SNMPv1/v2c/v3, and a variety of management features
- Surveillance Mode UI - optional user interface simplifies surveillance network configuration and maintenance

IPv6 Ready

- Fully IPv6 compatible and ready for future addressing standards



DGS-1210 Series

Gigabit Smart Managed Switches

Features

Security Features

- Access Control Lists (ACLs)
- D-Link Safeguard Engine protects the CPU from broadcast/multicast/unicast flooding
- Port Security supports up to 64 MAC addresses per port
- ARP Spoofing Prevention
- Smart IP-MAC-Port Binding
- DHCP Server Screening

Intuitive Management Options

- Web-based Graphical User Interface - Standard Mode or Surveillance Mode
- D-Link Network Assistant Utility
- Simplified CLI through Telnet
- Built-in SNMP MIB for remote NMS (D-View 7.0)

Advanced Features

- Static Route
- Auto Voice VLAN
- Dual software images
- Dual configuration files

Green Technology

- Link status detection
- Port shut-off
- System hibernation
- Time-based PoE (PoE models only)

Overview

The D-Link DGS-1210 Series Smart Managed Switches are the latest generation of switches to provide increased Power over Ethernet (PoE) output, a range of physical interface types, multiple management interfaces, and advanced Layer 2 features. With all of these features combined, the DGS-1210 Series provides a cost-efficient and flexible solution for expanding any business network.

The DGS-1210 Series switches support 8, 24, or 48 10/100/1000BASE-T ports. Each switch also supports an additional 2 or 4 Gigabit SFP ports for optical connections using multimode or singlemode SFP transceivers.

PoE Support

Five of the eight models in the DGS-1210 series family support Power-over-Ethernet capabilities, simplifying deployments with IP cameras, VoIP phones, wireless access points, and other powered devices. These models include the DGS-1210-10P, DGS-1210-10MP, DGS-1210-28P, DGS-1210-28MP and DGS-1210-52MP. Using the switch's management interface, an administrator can control various PoE functions, such as remotely rebooting cameras or access points, from anywhere on the network, including over the Internet.

The switches also support time-based PoE – an option that allows administrators to set a time window that determines when each port's PoE power is turned on and off. All PoE models support the IEEE 802.3af and 802.3at standards, and each PoE power budget varies per model.

Advanced Features

The DGS-1210 Series comes equipped with a complete lineup of L2 features, including IGMP snooping, port mirroring, Spanning Tree Protocol (STP), and Link Aggregation Control Protocol (LACP). The IEEE 802.3x Flow Control function allows servers to directly connect to the switch for fast, reliable data transfers.

The DGS-1210 Series also supports advanced features such as static routing. With static routing, IP routes are manually entered into a routing table, which allows for communication between different user groups in different VLAN segments in a network. The switch can directly handle inter VLAN routing using multiple interfaces, making the network run faster and more efficiently. Because the switches can manage internal routing, the network router can be assigned to handle external traffic routing only.

Network maintenance features include loopback detection and cable diagnostics. Loopback detection significantly speeds up troubleshooting by automatically detecting and shutting down switching loops. The cable diagnostics feature, designed primarily for administrators and customer service representatives, determines the cable quality and quickly discovers errors, allowing for hassle-free diagnostics and maintenance.

Automatic Configuration

The DGS-1210 Series supports Auto Voice VLAN and Surveillance Mode, which allow voice and video traffic to be automatically identified and handled differently to regular network traffic. Auto Voice VLAN detects Voice over IP (VoIP) traffic and automatically segments it from the rest of the network, increasing security and allowing Quality of Service (QoS) to be applied.

Surveillance Mode detects compatible ONVIF cameras and places them in a surveillance VLAN, allowing a single switch to be used for voice, video, and data, removing the need for dedicated hardware and reducing maintenance costs. Surveillance Mode also includes its own Web UI, making surveillance features easily accessible and simplifying management of your surveillance network.

Secure Your Network

D-Link's innovative Safeguard Engine protects the switches against traffic flooding caused by malicious attacks. The DGS-1210 Series supports 802.1X port-based authentication, allowing the network to be authenticated through external RADIUS servers. The Access Control List (ACL) feature enhances network security and helps to protect the internal IT network. The DGS-1210 Series also features Address Resolution Protocol (ARP) spoofing prevention, which provides protection from attacks on the network that could allow an intruder to sniff data frames, modify traffic, or bring traffic to a halt altogether by sending fake ARP messages. To prevent ARP spoofing attacks, the switch uses packet control ACLs to block invalid packets that contain fake ARP messages. For added security, the DHCP server screening feature filters DHCP replies on unauthorized ports to prevent them from being assigned an IP address.

Versatile Management

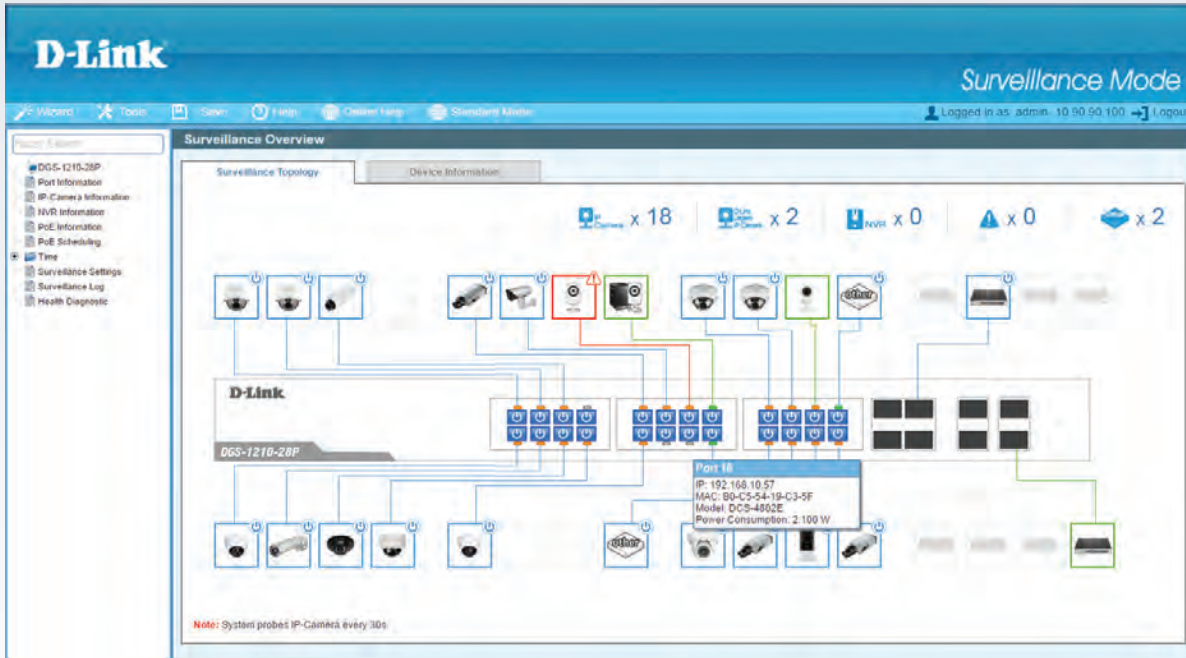
The DGS-1210 Series comes with the D-Link Network Assistant (DNA) utility that enables administrators to remotely control their network down to the port level. The D-Link Network Assistant utility furthermore allows customers to easily discover multiple D-Link Smart Managed Switches within the same L2 network segment and display them on-screen for instant access. With this utility, users do not need to change the IP address of their PC. This allows for simultaneous configuration and basic setup of all discovered devices, including password changes and firmware upgrades.

The DGS-1210 Series also supports D-View 7.0 and Command Line Interface (CLI) through Telnet. D-View 7.0 is a network management system that allows for the central management of critical network characteristics such as availability, reliability, resilience, and security.

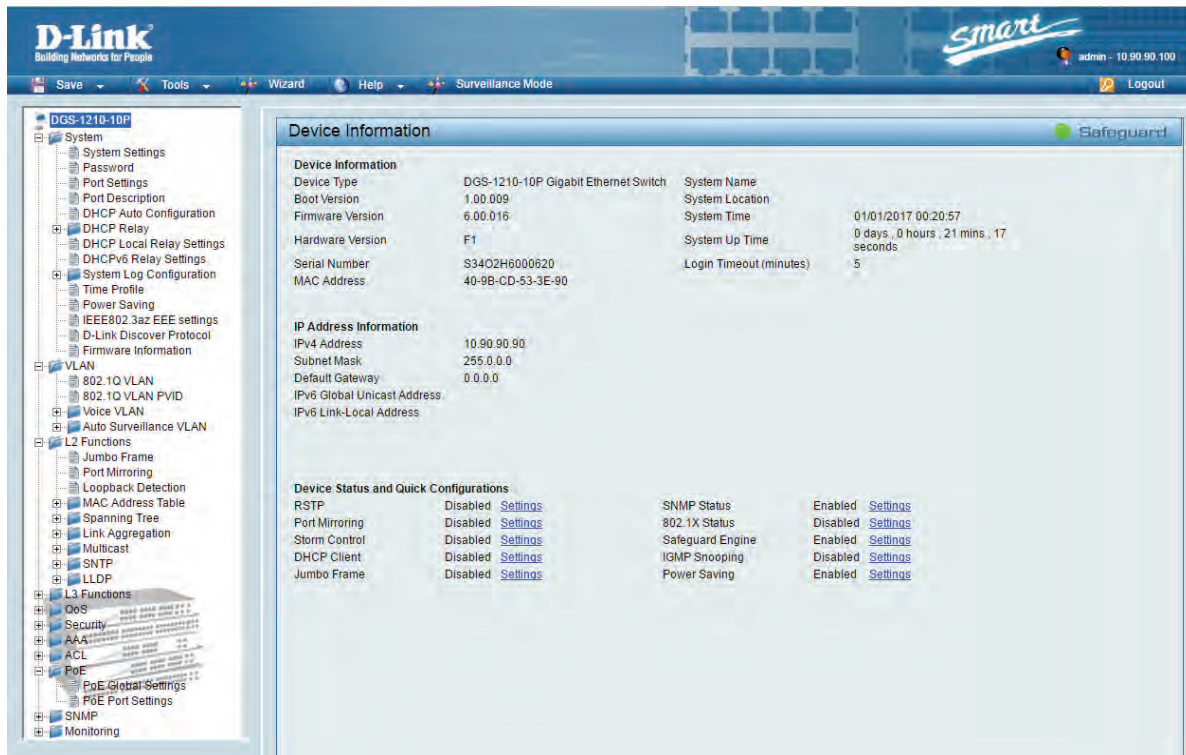
Lifetime Warranty and NBD Replacement




D-Link offers a Lifetime Warranty and Next Business Day (NBD) hardware replacement on the DGS-1210 Series Gigabit Smart Managed Switches to further its commitment to product quality and long-term customer confidence.¹

Surveillance Mode User Interface Surveillance Topology - Example Screenshot






Standard Mode User Interface Device Information - Example Screenshot





Technical Specifications			
			
General	DGS-1210-10	DGS-1210-10P	DGS-1210-10MP
Hardware Version	Rev. F	Rev. F	Rev. F
10/100/1000 Ports	8	8	8
100/1000 SFP Ports	2	2	2
Port Standards & Functions	IEEE 802.3 10BASE-T Ethernet (twisted-pair copper) IEEE 802.3u 100BASE-TX Fast Ethernet (twisted-pair copper) IEEE 802.3u 100BASE-FX 100 Mbps over fiber optic IEEE 802.3ab 1000BASE-T Gigabit Ethernet (twisted-pair copper) IEEE 802.3z 1000BASE-X 1 Gbps over fiber optic IEEE 802.3az Energy Efficient Ethernet (EEE) IEEE 802.3x Flow Control IEEE 802.3af/at compliance (for PoE ports on PoE models)		
Network Cables	UTP Cat. 5, Cat. 5e (100 m max.)		
Duplex Mode	Full/half-duplex for 10/100 Mbps Full-duplex for 1000 Mbps		
Media Interface Exchange	Auto MDI/MDIX adjustment for all twisted-pair ports		
Switching Capacity	20 Gbps	20 Gbps	20 Gbps
Transmission Method	Store-and-forward	Store-and-forward	Store-and-forward
MAC Address Table	8K entries	8K entries	8K entries
Static MAC Addresses	256 entries	256 entries	256 entries
Max. 64 Byte Packet Fwd Rate	14.88 Mpps	14.88 Mpps	14.88 Mpps
Packet Buffer Memory	4.1 Mbits	4.1 Mbits	4.1 Mbits
CPU Memory	DDR3 128 MB	DDR3 128 MB	DDR3 128 MB
Flash Memory	32 MB	32 MB	32 MB
Power over Ethernet (PoE)	DGS-1210-10	DGS-1210-10P	DGS-1210-10MP
PoE Standards	N/A	802.3af (PoE) and 802.3at (PoE+)	802.3af (PoE) and 802.3at (PoE+)
PoE Capable Ports	N/A	Ports 1 - 8 (PoE+)	Ports 1 - 8 (PoE+)
PoE Power Budget	N/A	65 W	130 W
LEDs	DGS-1210-10	DGS-1210-10P	DGS-1210-10MP
Power (per device)	Yes	Yes	Yes
Console (per device)	Yes	Yes	Yes
Link/Activity/Speed (per port)	Yes	Yes	Yes
PWR Max	--	Yes	Yes
Fan Error	--	--	--

Physical & Environmental	DGS-1210-10	DGS-1210-10P	DGS-1210-10MP
Power Input	100 to 240 VAC; 50/60 Hz Internal Universal Power Supply	54.0 V DC external power adapter	100 to 240 VAC; 50/60 Hz Internal Universal Power Supply
Max. Power Consumption (PoE enabled)	N/A	81.9W / 100V 80.6W / 240V	152.3W / 100V 148.7W / 240V
Max. Power Consumption (PoE disabled)	6.31W / 100V 6.33W / 240V	7.6W / 100V 7.5W / 240V	8.5W / 100V 9.4W / 240V
Standby Power Consumption	2.03W / 100V 2.07W / 240V	2.5W / 100V 2.5W / 240V	4.3W / 100V 5.2W / 240V
Acoustics	0 dB(A)	0 dB(A)	0 dB(A)
Heat Dissipation	21.53 BTU/hr (100V) 21.59 BTU/hr (240V)	279.59 BTU/hr (100 V) 275.04 BTU/hr (240 V)	519.51 BTU/hr (100 V) 507.23 BTU/hr (240 V)
Fans	No	No	No
Operating Temperature	23°F to 122°F (-5°C to 50°C)	23°F to 122°F (-5°C to 50°C)	23°F to 122°F (-5°C to 50°C)
Storage Temperature	-4°F to 158°F (-20°C to 70°C)	-4°F to 158°F (-20°C to 70°C)	-4°F to 158°F (-20°C to 70°C)
Operating Humidity	0% to 95% relative humidity	0% to 95% relative humidity	0% to 95% relative humidity
Storage Humidity	0% to 95% relative humidity	0% to 95% relative humidity	0% to 95% relative humidity
Dimensions (W x D x H)	11.0" x 5.0" x 1.73" (280 x 126 x 44 mm)	11.0" x 5.0" x 1.73" (280 x 126 x 44 mm)	13.0" x 7.0" x 1.73" (330 x 180 x 44 mm)
Weight	2.16 lbs (0.98 kg)	2.1 lbs (0.95 kg)	3.9 lbs (1.77 kg)
MTBF	1,380,058 hours	729,258 hours	1,274,005 hours
EMI Certifications	CE Class A, VCCI Class A, FCC Class A, BSMI, CCC		
Safety Certifications	CB, UL, BSMI, CCC		

Technical Specifications			
			
General	DGS-1210-28	DGS-1210-28P	DGS-1210-28MP
Hardware Version	Rev. F	Rev. F	Rev. F
10/100/1000 Ports	24	24	24
COMBO Ports (10/100/1000 or 100/1000 SFP)	4	4	4
Port Standards & Functions	IEEE 802.3 10BASE-T Ethernet (twisted-pair copper) IEEE 802.3u 100BASE-TX Fast Ethernet (twisted-pair copper) IEEE 802.3u 100BASE-FX 100 Mbps over fiber optic IEEE 802.3ab 1000BASE-T Gigabit Ethernet (twisted-pair copper) IEEE 802.3z 1000BASE-X 1 Gbps over fiber optic IEEE 802.3az Energy Efficient Ethernet (EEE) IEEE 802.3x Flow Control IEEE 802.3af/at compliance (for PoE ports on PoE models)		
Network Cables	UTP Cat. 5, Cat. 5e (100 m max.)		
Duplex Mode	Full/half-duplex for 10/100 Mbps Full-duplex for 1000 Mbps		
Media Interface Exchange	Auto MDI/MDIX adjustment for all twisted-pair ports		
Switching Capacity	56 Gbps	56 Gbps	56 Gbps
Transmission Method	Store-and-forward	Store-and-forward	Store-and-forward
MAC Address Table	8K entries	8K entries	8K entries
Static MAC Addresses	256 entries	256 entries	256 entries
Max. 64 Byte Packet Fwd Rate	41.7 Mpps	41.7 Mpps	41.7 Mpps
Packet Buffer Memory	4.1 Mbits	4.1 Mbits	4.1 Mbits
CPU Memory	DDR3 128 MB	DDR3 128 MB	DDR3 128 MB
Flash Memory	32 MB	32 MB	32 MB
Power over Ethernet (PoE)	DGS-1210-28	DGS-1210-28P	DGS-1210-28MP
PoE Standards	N/A	802.3af (PoE) and 802.3at (PoE+)	802.3af (PoE) and 802.3at (PoE+)
PoE Capable Ports	N/A	Ports 1 - 24 (PoE+)	Ports 1 - 24 (PoE+)
PoE Power Budget	N/A	193 W	370 W
LEDs	DGS-1210-28	DGS-1210-28P	DGS-1210-28MP
Power (per device)	Yes	Yes	Yes
Console (per device)	Yes	Yes	Yes
Link/Activity/Speed (per port)	Yes	Yes	Yes
PWR Max	--	Yes	Yes
Fan Error	--	Yes	Yes

Physical & Environmental	DGS-1210-28	DGS-1210-28P	DGS-1210-28MP
Power Input	100 to 240 VAC; 50/60 Hz Internal Universal Power Supply	100 to 240 VAC; 50/60 Hz Internal Universal Power Supply	100 to 240 VAC; 50/60 Hz Internal Universal Power Supply
Max. Power Consumption (PoE enabled)	N/A	263.9W / 100V 247.4W / 240V	446.1W / 100V 424.8W / 240V
Max. Power Consumption (PoE disabled)	17.32 W / 100 V 16.94 W / 240 V	30.6W / 100V 28.1W / 240V	29.8W / 100V 29.0W / 240V
Standby Power Consumption	6.49 W / 100 V 6.55 W / 240 V	19.6W / 100V 16.6W / 240V	18.5W / 100V 17.1W / 240V
Acoustics	0 dB(A)	High speed: 51.7 dB(A) Low speed: 44.9 dB(A)	High speed: 51.7 dB(A) Low speed: 44.9 dB(A)
Heat Dissipation	59.09 BTU/hr (100V) 57.79 BTU/hr (240V)	900.36 BTU/hr (100V) 844.23 BTU/hr (240V)	1521.99 BTU/hr (100V) 1449.49 BTU/hr (240V)
Fans	No	2	2
Operating Temperature	23°F to 122°F (-5°C to 50°C)	23°F to 122°F (-5°C to 50°C)	23°F to 122°F (-5°C to 50°C)
Storage Temperature	-4°F to 158°F (-20°C to 70°C)	-4°F to 158°F (-20°C to 70°C)	-4°F to 158°F (-20°C to 70°C)
Operating Humidity	0% to 95% relative humidity	0% to 95% relative humidity	0% to 95% relative humidity
Storage Humidity	0% to 95% relative humidity	0% to 95% relative humidity	0% to 95% relative humidity
Dimensions (W x D x H)	17.3" x 5.5" x 1.73" (440 x 140 x 44 mm)	17.3" x 9.8" x 1.73" (440 x 250 x 44 mm)	17.3" x 9.8" x 1.73" (440 x 250 x 44 mm)
Weight	4.74 lb (2.15 kg)	8.3 lbs (3.75 kg)	8.7 lbs (3.94 kg)
MTBF	992,594 hours	469,262 hours	277,967 hours
EMI Certifications	CE Class A, VCCI Class A, FCC Class A, BSMI, CCC		
Safety Certifications	CB, UL, BSMI, CCC		

Technical Specifications		
		
General	DGS-1210-52	DGS-1210-52MP
Hardware Version	Rev. F	Rev. F
10/100/1000 Ports	48	48
COMBO Ports (10/100/1000 or 100/1000 SFP)	4	4
Port Standards & Functions	IEEE 802.3 10BASE-T Ethernet (twisted-pair copper) IEEE 802.3u 100BASE-TX Fast Ethernet (twisted-pair copper) IEEE 802.3u 100BASE-FX 100 Mbps over fiber optic IEEE 802.3ab 1000BASE-T Gigabit Ethernet (twisted-pair copper) IEEE 802.3z 1000BASE-X 1 Gbps over fiber optic IEEE 802.3az Energy Efficient Ethernet (EEE) IEEE 802.3x Flow Control IEEE 802.3af/at compliance (for PoE ports on PoE models)	
Network Cables	UTP Cat. 5, Cat. 5e (100 m max.)	
Duplex Mode	Full/half-duplex for 10/100 Mbps Full-duplex for 1000 Mbps	
Media Interface Exchange	Auto MDI/MDIX adjustment for all twisted-pair ports	
Switching Capacity	104 Gbps	104 Gbps
Transmission Method	Store-and-forward	Store-and-forward
MAC Address Table	8K entries	8K entries
Static MAC Addresses	256 entries	256 entries
Max. 64 Byte Packet Fwd Rate	77.4 Mpps	77.4 Mpps
Packet Buffer Memory	12 Mbits	12 Mbits
CPU Memory	DDR3 128 MB	DDR3 128 MB
Flash Memory	32 MB	32 MB
Power over Ethernet (PoE)	DGS-1210-52	DGS-1210-52MP
PoE Standards	N/A	802.3af (PoE) and 802.3at (PoE+)
PoE Capable Ports	N/A	Ports 1 - 48 (PoE+)
PoE Power Budget	N/A	370 W
LEDs	DGS-1210-52	DGS-1210-52MP
Power (per device)	Yes	Yes
Console (per device)	Yes	Yes
Link/Activity/Speed (per port)	Yes	Yes
PWR Max	--	Yes
Fan Error	--	Yes

Physical & Environmental	DGS-1210-52	DGS-1210-52MP
Power Input	100 to 240 VAC; 50/60 Hz Internal Universal Power Supply	100 to 240 VAC; 50/60 Hz Internal Universal Power Supply
Max. Power Consumption (PoE enabled)	N/A	478.9W / 100V 454.1W / 240V
Max. Power Consumption (PoE disabled)	34.85W / 100V 34.2W / 240V	54W / 100V 54.4W / 240V
Standby Power Consumption	13.7W / 100V 13.9W / 240V	32 W / 100V 31.6 W / 240V
Acoustics	0 dB(A)	High speed: 52.4 dB(A) Low speed: 47.6 dB(A)
Heat Dissipation	118.92 BTU/hr (100V) 116.7 BTU/hr (240V)	1634.01 BTU/hr (100 V) 1549.29 BTU/hr (240 V)
Fans	No	3
Operating Temperature	23°F to 122°F (-5°C to 50°C)	23°F to 122°F (-5°C to 50°C)
Storage Temperature	-4°F to 158°F (-20°C to 70°C)	-4°F to 158°F (-20°C to 70°C)
Operating Humidity	0% to 95% relative humidity	0% to 95% relative humidity
Storage Humidity	0% to 95% relative humidity	0% to 95% relative humidity
Dimensions (W x D x H)	17.3" x 8.3" x 1.73" (440 x 210 x 44 mm)	17.3" x 16.9" x 1.73" (440 x 430 x 44 mm)
Weight	7.6 lb (3.46 kg)	13.8 lbs (6.26 kg)
MTBF	400,667 hours	236,406 hours
EMI Certifications	CE Class A, VCCI Class A, FCC Class A, BSMI, CCC	
Safety Certifications	CB, UL, BSMI, CCC	

Software Features - All Models		
L2 Features	<p>MAC Address Table</p> <ul style="list-style-type: none"> • 8K entries <p>IGMP Snooping</p> <ul style="list-style-type: none"> • IGMP v1/v2 Snooping • IGMP v3 awareness • Supports 256 IGMP groups • Supports at least 64 static multicast addresses • IGMP per VLAN • Supports IGMP Snooping Querier <p>Loopback Detection</p> <p>802.3ad Link Aggregation:</p> <ul style="list-style-type: none"> • Maximum of 8 groups/8 ports per group <p>LLDP</p> <p>LLDP-MED</p> <p>Jumbo Frame</p> <ul style="list-style-type: none"> • Up to 10,000 bytes 	<p>Spanning Tree Protocol</p> <ul style="list-style-type: none"> • 802.1D STP • 802.1W RSTP • 802.1s MSTP <p>Flow Control</p> <ul style="list-style-type: none"> • 802.3x Flow Control • HOL Blocking Prevention <p>Port Mirroring</p> <ul style="list-style-type: none"> • One-to-One • Many-to-One • Supports Mirroring for Tx/Rx/Both <p>Multicast Filtering</p> <ul style="list-style-type: none"> • Forwards all unregistered groups • Filters all unregistered groups <p>Configurable MDI/MDIX</p> <p>MLD snooping v1/v2 (256 groups)</p>
VLAN	<p>802.1Q</p> <p>VLAN Group</p> <ul style="list-style-type: none"> • Max. 256 static VLAN groups <p>Configurable VID from 1 - 4094</p> <p>Asymmetric VLAN</p>	<p>Auto Voice VLAN</p> <ul style="list-style-type: none"> • Max. 10 user-defined OUI • Max. 8 default OUI <p>Auto Surveillance VLAN</p>
Quality of Service (QoS)	<p>802.1p Quality of Service</p> <p>8 queues per port</p> <p>Queue Handling</p> <ul style="list-style-type: none"> • Strict • Weighted Round Robin (WRR) <p>Bandwidth Control</p> <ul style="list-style-type: none"> • Port-based (ingress/egress, min granularity 10/100/1000 is 16 Kbps) 	<p>QoS based on:</p> <ul style="list-style-type: none"> • 802.1p priority queues • DSCP • MAC address • EtherType • IP address • Protocol type • ToS • IP preference • IPv6 Traffic Class • TCP/UDP port
L3 Features	<p>IP interface</p> <ul style="list-style-type: none"> • Supports 4 interfaces <p>IPv6 Neighbor Discovery (ND)</p>	<p>Static routing</p> <ul style="list-style-type: none"> • 124 IPv4 static route entries • 50 IPv6 static route entries
Access Control List (ACL)	<p>Max. 50 access lists</p> <p>Max. 768 rules shared by IPv4, MAC, and IPv6</p> <p>Each rule can only be associated with a single port</p> <p>ACL based on</p> <ul style="list-style-type: none"> • MAC address <ul style="list-style-type: none"> • 802.1p priority mask • VID mask • Source/destination MAC address mask • EtherType mask • IP address <ul style="list-style-type: none"> • Source/destination IP address mask • DSCP mask • Protocol type mask • TCP/UDP port number mask 	<p>IPv6 address</p> <ul style="list-style-type: none"> • Source/destination IP address mask • DSCP mask • Protocol type mask • TCP/UDP port number mask • IPv6 traffic class mask
Security	<p>Broadcast/Multicast/Unicast Storm Control</p> <p>D-Link Safeguard Engine</p> <p>Traffic segmentation</p> <p>SSH v2</p> <p>TLS v1.0</p> <p>DoS attack prevention</p> <p>802.1X Port-based Access Control</p> <p>Port Security</p> <ul style="list-style-type: none"> • Supports up to 64 MAC addresses per port <p>ARP Spoofing Prevention</p> <ul style="list-style-type: none"> • Max. 127 entries 	<p>DHCP Server Screening</p> <p>IP-MAC-Port Binding (Smart Binding)</p> <ul style="list-style-type: none"> • ARP Inspection <ul style="list-style-type: none"> • Max. 256 entries • IPv4 Inspection <ul style="list-style-type: none"> • Max. 127 entries • IPv6 Inspection <ul style="list-style-type: none"> • Max. 63 entries • DHCP Snooping <ul style="list-style-type: none"> • Max. 512 entries

AAA	<p>802.1X Authentication</p> <ul style="list-style-type: none"> • Supports local/RADIUS database • Supports port-based access control • Supports EAP, OTP, TLS, TTLS, PEAP • Max. 128 entries when using local database 	<p>IPv6 RADIUS server</p> <p>Support MD5 authentication</p>
OAM	Cable diagnostics	Factory reset
Management	<p>Web-based GUI</p> <p>D-Link Network Assistant Utility</p> <p>Compact CLI</p> <p>Telnet Server</p> <p>TFTP Client</p> <p>Configurable MDI/MDIX</p> <p>SNMP</p> <ul style="list-style-type: none"> • Supports v1/v2c/v3 <p>SNMP Trap</p> <p>Backup/upgrade firmware</p> <p>Smart Wizard</p> <p>Upload/download configuration file</p> <p>BootP/DHCP Client</p>	<p>System Log</p> <ul style="list-style-type: none"> • Max. 500 log entries <p>SNTP</p> <p>ICMP v6</p> <p>IPv4/v6 Dual Stack</p> <p>DHCP Auto Configuration</p> <p>Time setting</p> <ul style="list-style-type: none"> • SNTP <p>RMONv1</p> <p>Trusted host</p> <p>Dual image</p> <p>Dual configuration</p>
Green v3.0 Technology	<p>Power Saving by:</p> <ul style="list-style-type: none"> • Link Status • Time-based PoE: PoE ports can be turned on/off by port or system through schedule 	<p>System hibernation</p> <p>Port shut off</p> <p>Cable length detection</p>
MIBs	<ul style="list-style-type: none"> • RFC1212 Concise MIB Definitions • RFC1213 MIBII • RFC1215 MIB Traps Convention • RFC1493 Bridge MIB • RFC1157, RFC2573, RFC2575, RFC2576 SNMP MIB • RFC1442, RFC1901, RFC1902, RFC1903, RFC1904, RFC1905, RFC1906, RFC1907, RFC1908, RFC2578, RFC3418 SNMPv2 MIB • RFC271, RFC1757, RFC2819 RMON MIB • RFC2021 RMONv2 MIB • RFC1398, RFC1643, RFC1650, RFC2358, RFC2665 Ether-like MIB 	<ul style="list-style-type: none"> • RFC2674 802.1p MIB • Interface Group MIB • RFC2618 RADIUS Authentication Client MIB • RFC4022 MIB for TCP • RFC4113 MIB for UDP • RFC2389 MIB for Diffserv. • RFC2620 RADIUS Accounting Client MIB • Private MIB • PoE MIB • DDP MIB • LLDP-MED MIB
RFC Standards	<ul style="list-style-type: none"> • RFC791 IP • RFC768 UDP • RFC793 TCP • RFC792 ICMPv4 • RFC2463, RFC4443 ICMPv6 • RFC826 ARP • RFC1321, RFC2284, RFC2865, RFC2716, RFC3580 Extensible Authentication Protocol (EAP) 	<ul style="list-style-type: none"> • RFC2573 SNMP Applications • RFC2461, RFC4861 Neighbor Discovery for IPv6 • RFC2462, RFC4862 IPv6 Stateless Address Auto-configuration (SLAAC) • RFC2464 IPv6 over Ethernet and definition • RFC4291 IPv6 Addressing Architecture • RFC2893, RFC4213 IPv4/IPv6 dual stack function

DGS-1210 Series Gigabit Smart Managed Switches

Ordering Information		
Product	Description	Warranty
DGS-1210-10	8 10/100/1000BASE-T and 2 1G SFP Ports L2+ Smart Managed Switch	Lifetime ¹
DGS-1210-10P	8 10/100/1000BASE-T PoE and 2 1G SFP Ports L2+ Smart Managed Switch, 65W PoE Budget	Lifetime ¹
DGS-1210-10MP	8 10/100/1000BASE-T PoE and 2 1G SFP Ports L2+ Smart Managed Switch, 130W PoE Budget	Lifetime ¹
DGS-1210-28	24 10/100/1000BASE-T and 4 1G RJ45/SFP COMBO Ports L2+ Smart Managed Switch	Lifetime ¹
DGS-1210-28P	24 10/100/1000BASE-T PoE and 4 1G RJ45/SFP COMBO Ports L2+ Smart Managed Switch, 193W PoE Budget	Lifetime ¹
DGS-1210-28MP	24 10/100/1000BASE-T PoE and 4 1G RJ45/SFP COMBO Ports L2+ Smart Managed Switch, 370W PoE Budget	Lifetime ¹
DGS-1210-52	48 10/100/1000BASE-T and 4 1G RJ45/SFP COMBO Ports L2+ Smart Managed Switch	Lifetime ¹
DGS-1210-52MP	48 10/100/1000BASE-T PoE and 4 1G RJ45/SFP COMBO Ports L2+ Smart Managed Switch, 370W PoE Budget	Lifetime ¹
Optional 1 Gbps SFP Transceivers		
DGS-712	1000BASE-T SFP Transceiver	
DEM-310GT	1000BASE-LX SFP Transceiver, Single-mode	
DEM-311GT	1000BASE-SX SFP Transceiver, Multimode	

¹ Lifetime Warranty available in U.S.A. only. Lifetime Warranty is effective for products purchased on or after Aug 1, 2017. Products purchased prior to Aug 1, 2017 are covered by Limited Lifetime Warranty. Lifetime Warranty void when not purchased from Authorized US D-Link Reseller. Please visit us.dlink.com for list of Authorized US Resellers.

Updated 06-Sept-2017
Hardware Rev F

DGS-1210-SERIES_REV_F_DATASHEET_2.00_EN_US.PDF

For more information

U.S.A. | 17595 Mt. Herrmann Street | Fountain Valley, CA 92708 | 800.326.1688 | us.dlink.com

©2017 D-Link Corporation/D-Link Systems, Inc. All rights reserved. D-Link and the D-Link logo are registered trademarks of D-Link Corporation or its subsidiaries in the United States and/or other countries. Other trademarks or registered trademarks are the property of their respective owners.

All references to speed are for comparison purposes only. Product specifications, size and shape are subject to change without notice, and actual product appearance may differ from that depicted herein.

Visit us.dlink.com for more details.

D-Link[®]
Building Networks for People