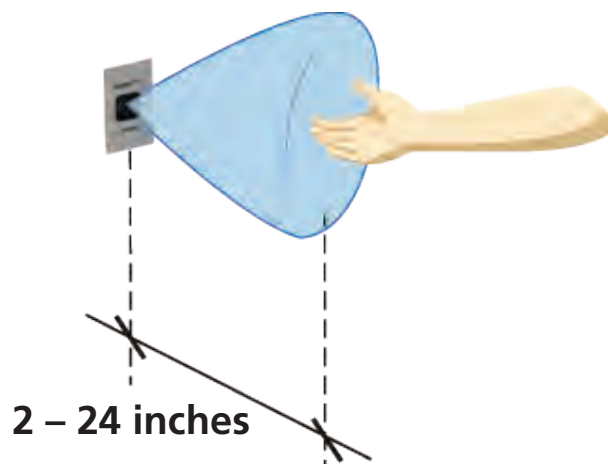
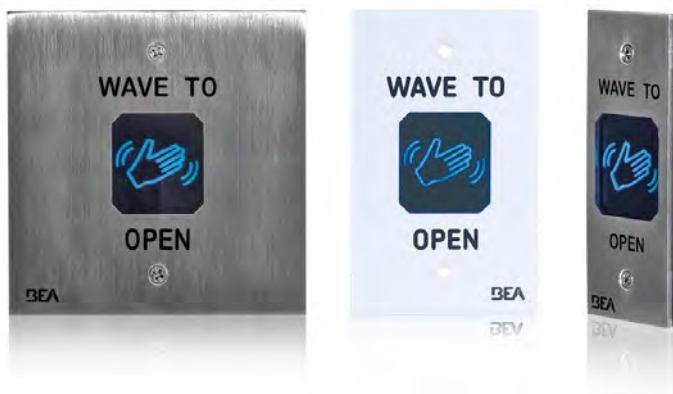


MS11

ADJUSTABLE RANGE, STAINLESS STEEL MICROWAVE TOUCHLESS ACTUATOR



PRIMARY APPLICATIONS



DESCRIPTION

BEA's MS11 is an aesthetically pleasing, touchless activation device designed to reduce the spread of germs and improve accessibility in healthcare, retail, industrial and commercial settings. The MS11 has been purpose-built to withstand the extreme rigors of fast-paced and sanitary environments.

The flush-mount MS11 is a durable stainless steel device utilizing adjustable-range microwave technology. The MS11's illuminated center and audible signaling confirms activation and encourages proper touchless use.

The MS11 detects moving objects such as a hand, cart or wheelchair and is designed for use in hospitals, pharmacies, clean rooms, food service and other areas needing highly accessible and germ-free activation.

FEATURES & BENEFITS

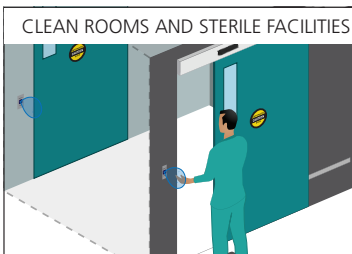
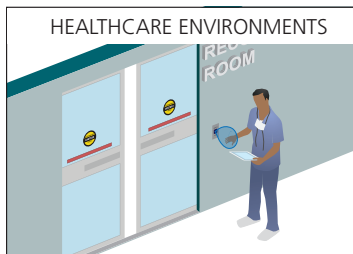
- NEMA 4 (IP65) enclosure capable of use in industrial and extreme washdown environments
- Illuminated blue center changes to green upon signal reception / activation
- Adjustable sensing zone from 2 – 24 inches (pulse or toggle)
- Adjustable audible alert setting, including silent-mode required for hospitals and other noise-sensitive environments
- Configurable output hold time of 1 – 30 seconds allowing unique, user-defined device placement
- Compatible with all automatic door control makes and models



BEA, Inc.
RIDC Park West
100 Enterprise Drive
Pittsburgh, PA 15275-1213

Customer Service: 800.523.2462
Technical Support: 800.407.4545
www.BEAinc.com

APPLICATIONS

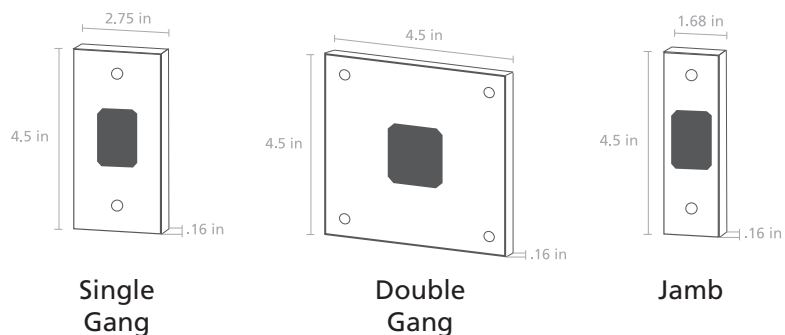


TECHNICAL SPECIFICATIONS

Technology	Microwave Doppler Radar
Detection Mode	Motion (bidirectional), Toggle or Timed Mode
Sensing Zone **	2 in – 24 in (adjustable)
Hold Time	1 s – 30 s
Alert Settings	
Audible Alert	Silent Mode or Signal Mode
Visual Alert	Blue (Standby) Green (Activation)
Supply Voltage	12 – 24 VAC / VDC or 5 VDC
Current Consumption	< 2.8 W
Temperature Range	–22 °F – 158 °F
Enclosure Rating	NEMA 4 / IP65
Relay	1-Form C Solid State Relay 1 A 30 VAC / VDC (max)
Dimensions	
Single Gang	2.75 in (W) × 4.5 in (H) × 0.98 in (D)
Double Gang	4.5 in (W) × 4.5 in (H) × 0.98 in (D)
Jamb	1.68 in (W) × 4.5 in (H) × 0.98 in (D)
Wire Harness Length	12 in
Material	Stainless Steel (faceplate) / ABS (center)

** See User's Guide

DIMENSIONAL DRAWINGS



RELATED PRODUCTS



10MS11S
STAINLESS STEEL
SINGLE GANG



10MS11J
STAINLESS STEEL
JAMB STYLE



10MS11D
STAINLESS STEEL
DOUBLE GANG



10MS11SW
WHITE POWDERCOAT
SINGLE GANG



10MS11JW
WHITE POWDERCOAT
JAMB STYLE



10MS11DW
WHITE POWDERCOAT
DOUBLE GANG



10RD900
900 MHZ RECEIVER



10TD900TR
900 MHZ RETROFIT
TRANSMITTER



10ABOXSGSMS
SINGLE GANG ANGLED
MOUNTING BOX

www.BEAinc.com

© 2017 BEA, Inc. All rights reserved.

MS11 ADJUSTABLE RANGE, STAINLESS STEEL MICROWAVE TOUCHLESS ACTUATOR

BEA, Inc.
RIDC Park West
100 Enterprise Drive
Pittsburgh, PA 15275-1213

Customer Service: 800.523.2462
Technical Support: 800.407.4545

