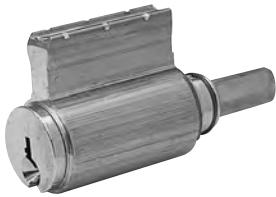


Cylinders for Bored, Auxiliary, Integra Lock and Mail Box Locks

Cylinders and Components

SARGENT®
ASSA ABLOY

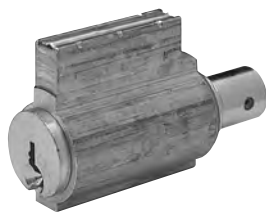
10, 7, 6500 & 7500 (Lever) Line Standard Cylinders



Part Numbers:

C10-1 (13-3266) for all functions (except 50)
C10-2 (13-3492) for Hotel 50 function

8 and 9 Line Cylinders* (Knob Locks)



Part Numbers:

C8-1 (13-2194) for all functions (except 50)
C8-2 (13-2195) for Hotel 50 function

T-Zone (11 Line) Cylinder



Part Numbers:

C11-1 (13-4145) for all functions (except 50)
C11-2 (13-4146) for Hotel 50 function

6 Line Cylinder



Part Numbers: Knob Function

C6-1 (13-3129)	S & N	All except 50
C6-1B (13-3130)	B	All except 50
C6-2 (13-3108)	S & N	50 Function
C6-2B (13-3109)	B	50 Function

4101 Mailbox Cylinder



Consult mailbox manufacturer to determine compatibility of cylinder and mailbox. 5 or 6 pin systems

- 2 cut day keys provided
- US Postal regulations prohibit master keyed cylinder

460, 470 and 480 Deadbolt & 7500 Interconnected Deadbolt Cylinders



Part Numbers: Function

C480-1 (13-3456)	454, 474, 484
C480-2 (13-3457)	7500DB, 455, 485, 487
C480-3 (13-3458)	456, 475, 486
C460-1 (13-3495)	464
C460-2 (13-3496)	465

7600 Integralock Cylinder



Part Number:

C7600-1 (13-3987)
for all functions
(except 26, 27, 50)

5*, 8X and 5500 Line Cylinders



Part Numbers:

C5500-1 (13-3526)
for all functions
(except 5 line 50)
C5500-2 (13-3708) 5 line
50 function hotel
C8X-1 (13-5202)

758/858 Padlock Cylinder



Part Numbers:

C750-1 for
758/858 Padlocks
04 Finish only

1655 Locker Lock Cylinder



Part Numbers:

C1655-1
13-1813 (tail piece)

* Discontinued products

All cylinders are 6 pin and are supplied with 2 nickel silver change keys unless noted.
When cylinders are ordered keyed to 5 pin systems, the (6th) last chamber will be empty.
Cylinder finishes: 4 and 15.
For cylinders in competitive keyways, see Page 11.

When double cylinder locksets are keyed alike on both sides, 2 change keys are supplied

Cylinders are supplied random keyed unless specified 1 bitted or master keyed. For master keyed orders provide keying details as requested on SARGENT Keyed Order Lead Sheets, located in the price book or contact customer service.

Cylinders ordered from SARGENT Turbo program are supplied as 1 bitted as standard unless otherwise specified.

Cylinders BHMA A156.5 Grade 1 listed except hotel functions, C5500 and C7600.

40 Series Mortise Cylinders and 34 Series Rim Cylinders

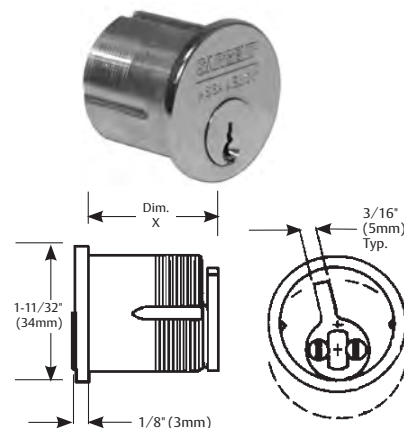
Cylinders and Components

SARGENT®
ASSA ABLOY

40 Series Mortise Cylinder

- Cylinder: Solid brass, 1-5/32" (29mm) diameter
- Cap: Brass, bronze or stainless steel
- Furnished standard with No. 97 rosette and compression spring
- Optional Collars/Spacers available and ordered separately, refer to product catalogs for additional information
- See Cam Chart on Page 6 for cam required
- 6 pin standard; for 7 pin specify "7 pin", size 42 minimum
- No. 41 cylinder not available in 7 pin
- Mortise cylinder assemblies that are ordered without hardware are supplied with standard SARGENT offset cam 13-0664
- Cylinder finishes: 3, 4, 9, 10, 10B, 10BE, 10BL, 15, 20D, 32, 32D
- Plug finishes: 4, 15

Length under cylinder head										
Cylinder No.	41	42	43	44	46	48	50	52	54	56
Dim. X	1-1/8" (29mm)	1-1/4" (32mm)	1-3/8" (35mm)	1-1/2" (38mm)	1-3/4" (44mm)	2" (51mm)	2-1/4" (57mm)	2-1/2" (64mm)	2-3/4" (70mm)	3" (76mm)



50-40 Series Hotel Type Cylinder

Features same as standard 40 Series cylinders except:

- For use with 7850 or 8250 lock only
- 6 pin only
- Contact factory for compatibility requirements for existing 6 pin systems
- Uses only cam #115 (13-2045)
- Guest and Master keys will only retract the latch bolt but not project or retract the dead bolt
- Emergency keys (catalog # 7268 EMK) retract the latchbolt and deadbolt and can also project the deadbolt
- C Series keyways supplied standard, specify if different keyway is required. On 1 bitted or KD, CA key way will be supplied if not otherwise specified
- Consult Sargent Key records dept. when adding Hotel cylinders to existing key systems for compatibility
- Length under cylinder head (Dim. X)
50-43 1-3/8" (35mm); 50-44 1-1/2" (38mm)

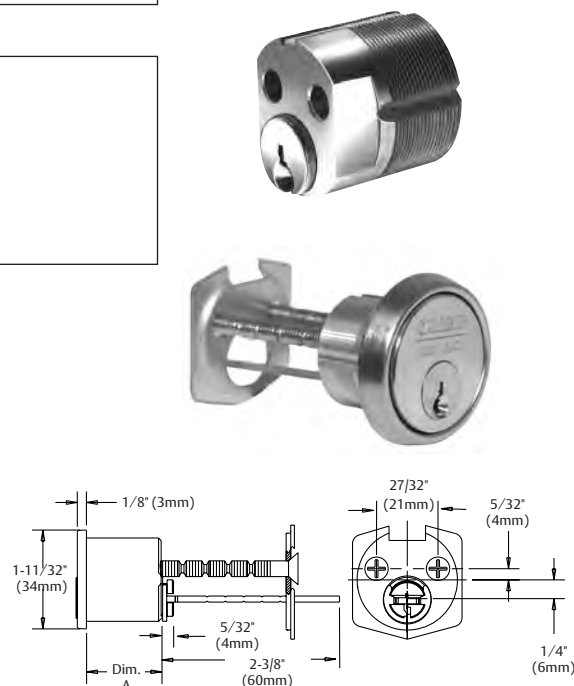
78-40 Series Exposed Shell Only Cylinders

- Cylinder: Solid brass, 1-5/32" (29mm) diameter
- 6 pin standard, for 7 pin specify "7 pin"
- For use with SARGENT mortise locks with Escutcheon Trim (KE 3/4, LE 3/4) only
- See Function Table on Page 6 for cam required
- 78-41 6 pin; single cylinder function only except 50
- 78-42 6 or 7 pin; single cylinder functions only
- 78-43 6 or 7 pin; all functions except 50
- Plug finishes: 4, 15

34 Series Rim Type Cylinder

- 27/32" (21mm) screw pattern for through-bolted SARGENT exit devices
- Cylinder: Solid brass
- Cap: Brass, bronze or stainless steel
- Furnished standard with No. 97 rosette and compression spring, "break-off" screws and back plate
- 6 pin standard, for 7 pin specify "7 pin"
- Horizontal tail piece only
- Cylinder finishes: 3, 4, 9, 10, 10B, 10BE, 10BL, 15, 20D, 32, 32D
- Plug finishes: 4, 15

No. of Pins	Door Thickness when used with outside trim	Dim. A (Min.)
6	2-3/8" to 3-1/4" (60mm to 82mm)	1-1/16" (27mm)
7	2-1/2" to 3-1/2" (64mm to 89mm)	1-7/32" (31mm)



All cylinders are standard 6 pin and are supplied with 2 nickel silver change keys unless noted. In cylinders ordered for 5 pin systems, the (6th) last chamber will be empty.

When double cylinder locksets are keyed alike on both sides, 2 change keys are supplied.

For cylinders in competitive keyways, see Page 11.

Cylinders are supplied random keyed unless specified 1 bitted or master keyed. For master keyed orders provide keying details as requested on SARGENT Keyed Order Lead Sheets, located in the price book or contact customer service.

Cylinders BHMA A156.5 Grade 1 listed except hotel functions.