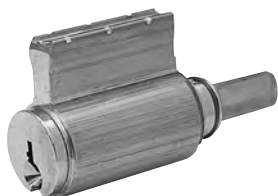


# Cylinders for Bored, Auxiliary, Integra Lock and Mail Box Locks

## Cylinders and Components

**SARGENT®**  
**ASSA ABLOY**

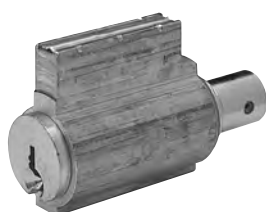
### 10, 7, 6500 & 7500 (Lever) Line Standard Cylinders



**Part Numbers:**

C10-1 (13-3266) for all functions (except 50)  
C10-2 (13-3492) for Hotel 50 function

### 8 and 9 Line Cylinders\* (Knob Locks)



**Part Numbers:**

C8-1 (13-2194) for all functions (except 50)  
C8-2 (13-2195) for Hotel 50 function

### T-Zone (11 Line) Cylinder



**Part Numbers:**

C11-1 (13-4145) for all functions (except 50)  
C11-2 (13-4146) for Hotel 50 function

### 6 Line Cylinder



**Part Numbers: Knob Function**

|                 |       |               |
|-----------------|-------|---------------|
| C6-1 (13-3129)  | S & N | All except 50 |
| C6-1B (13-3130) | B     | All except 50 |
| C6-2 (13-3108)  | S & N | 50 Function   |
| C6-2B (13-3109) | B     | 50 Function   |

### 4101 Mailbox Cylinder



Consult mailbox manufacturer to determine compatibility of cylinder and mailbox. 5 or 6 pin systems

- 2 cut day keys provided
- US Postal regulations prohibit master keyed cylinder

### 460, 470 and 480 Deadbolt & 7500 Interconnected Deadbolt Cylinders



**Part Numbers: Function**

|                  |                       |
|------------------|-----------------------|
| C480-1 (13-3456) | 454, 474, 484         |
| C480-2 (13-3457) | 7500DB, 455, 485, 487 |
| C480-3 (13-3458) | 456, 475, 486         |
| C460-1 (13-3495) | 464                   |
| C460-2 (13-3496) | 465                   |

### 7600 Integralock Cylinder



**Part Number:**

C7600-1 (13-3987)  
for all functions  
(except 26, 27, 50)

### 5\*, 8X and 5500 Line Cylinders



**Part Numbers:**

C5500-1 (13-3526)  
for all functions  
(except 5 line 50)  
C5500-2 (13-3708) 5 line  
50 function hotel  
C8X-1 (13-5202)

### 758/858 Padlock Cylinder



**Part Numbers:**

C750-1 for  
758/858 Padlocks  
04 Finish only

### 1655 Locker Lock Cylinder



**Part Numbers:**

C1655-1  
13-1813 (tail piece)

#### \* Discontinued products

All cylinders are 6 pin and are supplied with 2 nickel silver change keys unless noted.  
When cylinders are ordered keyed to 5 pin systems, the (6th) last chamber will be empty.  
Cylinder finishes: 4 and 15.  
For cylinders in competitive keyways, see Page 11.

When double cylinder locksets are keyed alike on both sides, 2 change keys are supplied

Cylinders are supplied random keyed unless specified 1 bitted or master keyed. For master keyed orders provide keying details as requested on SARGENT Keyed Order Lead Sheets, located in the price book or contact customer service.

Cylinders ordered from SARGENT Turbo program are supplied as 1 bitted as standard unless otherwise specified.

Cylinders BHMA A156.5 Grade 1 listed except hotel functions, C5500 and C7600.

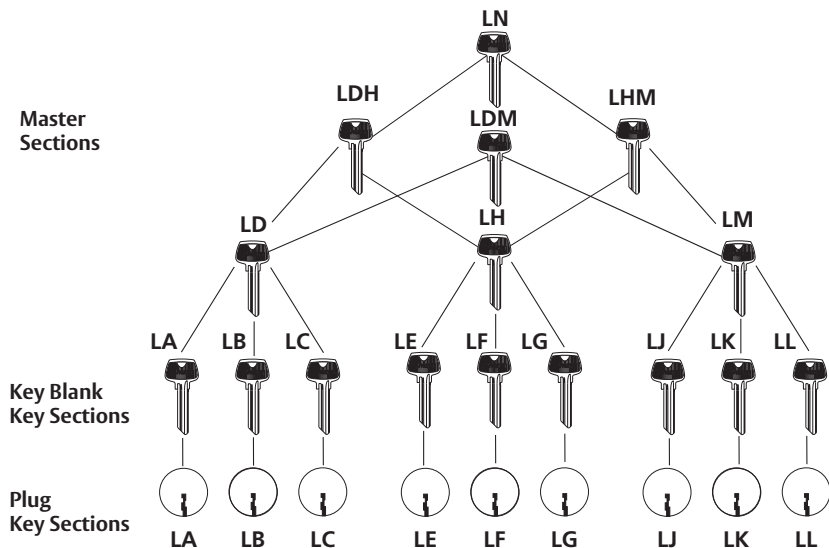
# Key Blanks/Key Sections, Bitting Lists

## Cylinders and Components

**SARGENT®**  
**ASSA ABLOY**

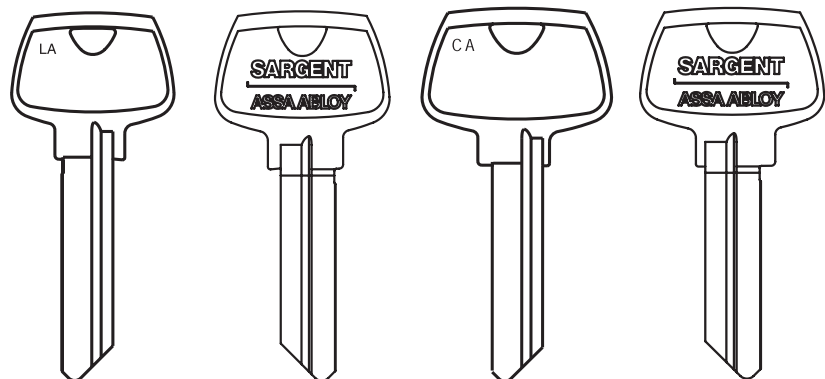
| 5 Pin     |  | 6 Pin     |  | 7 Pin     |  |
|-----------|--|-----------|--|-----------|--|
| Key Blank | Key Section  | Key Blank | Key Section  | Key Blank | Key Section  |
| 265       | U<br>R   | 6265      | U<br>R<br>S  |           | LD<br>LH<br>LM<br>LDH<br>LDM<br>LHM<br>LN<br>RD<br>RH<br>RM<br>RDH<br>RDM<br>RHM<br>RN                   |
| 270       | LD<br>LH<br>LM<br>LDH<br>LDM<br>LHM<br>LN<br>RD<br>RH<br>RM<br>RDH<br>RDM<br>RHM<br>RN                   | 6270      | HD<br>HH<br>HM<br>HHM<br>HDH<br>HDM<br>HN<br>RD<br>RH<br>RM<br>RDH<br>RDM<br>RHM<br>RN                   | 7270      | LD<br>LH<br>LM<br>LDH<br>LDM<br>LHM<br>LN<br>RD<br>RH<br>RM<br>RDH<br>RDM<br>RHM<br>RN                   |
| 273       | CD<br>CH<br>CM<br>CDH<br>CHM<br>CN   | 6273      | CD<br>CH<br>CM<br>CDH<br>CHM<br>CN   | 7273      | CD<br>CH<br>CM<br>CDH<br>CHM<br>CN   |
| 275       | S  |           |  |           |  |
| 275       | LA<br>LB<br>LC<br>LE<br>LF<br>LG<br>LJ<br>LK<br>LL<br>RA<br>RB<br>RC<br>RE<br>RF<br>RG<br>RJ<br>RK<br>RL | 6275      | HA<br>HB<br>HC<br>HE<br>HF<br>HG<br>HJ<br>HK<br>HL<br>RA<br>RB<br>RC<br>RE<br>RF<br>RG<br>RJ<br>RK<br>RL | 7275      | LA<br>LB<br>LC<br>LE<br>LF<br>LG<br>LJ<br>LK<br>LL<br>RA<br>RB<br>RC<br>RE<br>RF<br>RG<br>RJ<br>RK<br>RL |
| 278       | CA<br>CB<br>CC<br>CE<br>CF<br>CG<br>CJ<br>CK<br>CL<br>CR   | 6278      | CA<br>CB<br>CC<br>CE<br>CF<br>CG<br>CJ<br>CK<br>CL<br>CR   | 7278      | CA<br>CB<br>CC<br>CE<br>CF<br>CG<br>CJ<br>CK<br>CL<br>CR   |

For Multiplex Masterkey Systems  
(L keyway family shown, others similar)



### Multi Keyway Systems

- L – System Stock Keyways
- C – System Hotel Keyway (Furnished in Large Bow only)
- H – System Contract Master Key Systems
- R – System Contract MasterKey Systems



Standard 6 pin

Large Bow approximately 15% larger than standard bow. Provided for SARGENT "C" family as standard.

### Single Keyway Sections

- R Section \*
- S Section
- U Section \*
- CR Section

\* Cylinders ordered in either U or R single section only. Offered as 1 bitting for field keying

**Restricted Keyways:** Restricted keyways are SARGENT (factory) controlled geographically to limit sales and prevent unauthorized key duplication.

For availability of restricted keyways and key sections, contact SARGENT Key Records Department.

Orders for restricted keyway systems, key blanks and cylinders, require a letter of authorization from the system owner.

# Visual Key Control and Tamper Proof Packaging

## Cylinders and Components

**SARGENT®**  
**ASSA ABLOY**

### Visual Key Control (Stamping)

To allow for easier key and cylinder identification, SARGENT offers the option for permanent stamping of keys and/or cylinder with industry standard alpha-numeric keyset symbols.

Non-visual key control stamped change (day) keys include bitting numbers as standard, (Item A) unless specified in keying order lead sheet submitted with order requesting to be omitted and key set substituted.

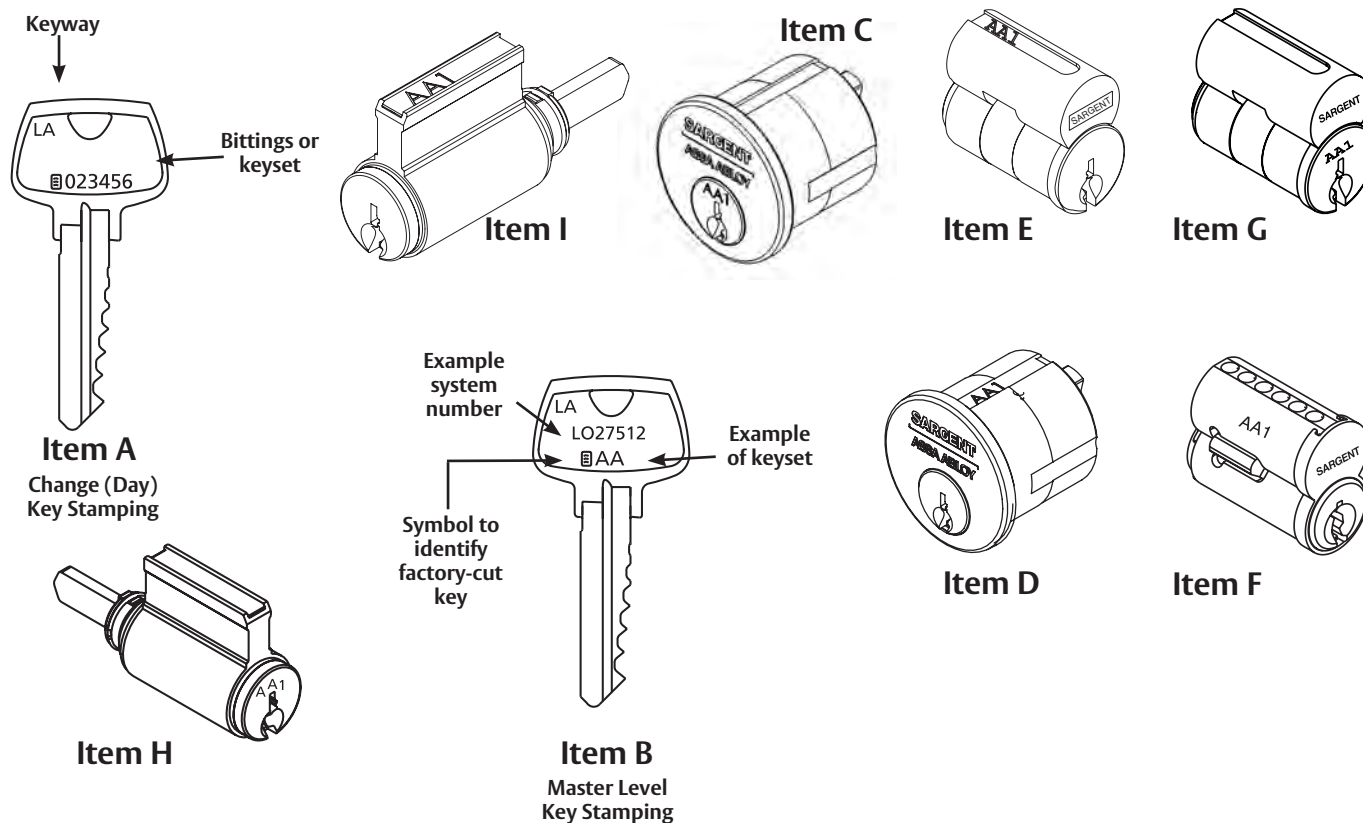
SFIC and Signature change keys are stamped with key set symbols as standard.

Master level keys do not include bitting numbers. Master level keys include system register numbers stamped on the first line, and the standard visual key control designations on the second line (Item B).

#### Up to 7 characters available for permanent stamping for Visual Key Control

- Key and cylinder identified by industry standard alpha-numeric keyset symbols
- Easy visual identification on the face of the plug (Item C or Item G or H) not available with XC, Signature or SFIC cylinders
- Concealed stamping on mortise and rim cylinders and bored lock cylinders available on the slide only (Item D or I)
- Cylinder-slide stamping available on 5100 and 6300 SARGENT Large Format Interchangeable (Removable) Cores, bored lock, mortise/rim cylinders (Item D, E & I)
- Core side engraving available for 7300B Series up to 7 characters (Item F)
- Special key stampings available, such as "DO NOT DUPLICATE" or "CITY OF PHOENIX"
- XC and Signature cylinders not available with visual plug stamping
- XC and Signature cylinders available with only concealed slide stamping (Item D, E and I) only
- Signature Large Format Interchangeable (Removable) Cores 10-6300 available with cylinder slide stamping (Item E, I D)

**Note:** SARGENT will stamp alternate identity codes on cylinders and/or keys whenever requested. This alternate stamping can not be different if both are to be stamped. Master Level Keys can also be stamped with a single alternate code



### Tamper Proof Packaging

For the highest level of security for the end user, Tamper Proof Packaging is used on all Master Keys, Signature key blanks and all restricted key blanks. This heat sealed shrink wrap identified with "SARGENT Sealed For Your Security" provides assurance of the integrity of the factory generated key system.

# Master Keying and Cylinder Terms

## Cylinders and Components

**SARGENT®**  
**ASSA ABLOY**

SARGENT requires all orders containing Master Keying details to be submitted using the industry standard D.H.I. ANSI/BHMA format. Key Symbols used on a master keyed order require combinations of letters and/or letters and numbers.

For complete details on proper structuring format of key symbols refer to:

D.H.I. Handbook Section 8 Finish Hardware KEYING SYSTEMS AND NOMENCLATURE or,  
ANSI/BHMA Standard A156.28, AMERICAN NATIONAL STANDARDS FOR KEYING SYSTEMS.

Or contact SARGENT for assistance.

### Basic Keying Terms

| Keys and terms        | Abbreviation | Definition  |
|-----------------------|--------------|---|
| Change key            | CK           | Individual lock key   |
| Masterkey             | MK           | Operates any given quantity of cylinders with different key changes                           |
| Grand Masterkey       | GMK          | Operates all individual locks already operated by masterkey(s)                                |
| Great Grand Masterkey | GGMK         | Operates all locks under the various masterkey(s) and grand master key(s) already established |
| Emergency Key         | EMK          | Operates hotel locks having shut out feature which blocks entry by all other keys             |
| Construction key      | CMK          | Operates all cylinders designated for a temporary period during construction                  |
| Control Key           | CTL          | Key to install or remove interchangeable or removable cores                                   |
| Keyway                | KWY          | Broaching in a cylinder plug  |
| Key section           | KWY          | Sidewarding on key to match broaching in plug   |
| Single keyed          | SKD          | Cylinders operated by their change key only; not operated by any master key                   |

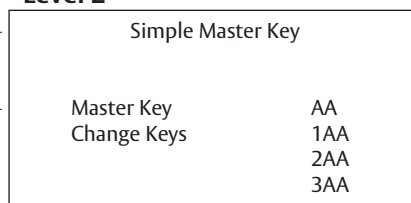
### Cylinder Terms

| ALOA* adopted terms | Alternate terms               |
|---------------------|-------------------------------|
| Shell               | Cylinder body, Cylinder shell |
| Plug                | Barrel, Cylinder barrel       |
| Tail Piece          | Connecting bar                |
| Bottom Pins         | Key pin, Ball end pins        |
| Master Pins         | Splits, Chips                 |
| Top Pins            | Drivers                       |
| Change Key          | Day key                       |
| Key Cut             | Bit                           |

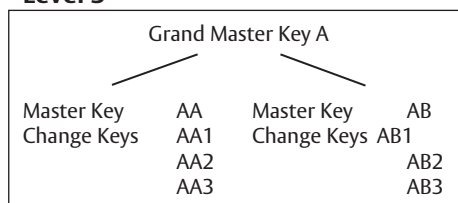
\* Associated Locksmiths of America

### Examples of Master Key System Levels and Symbol Structure\*\*

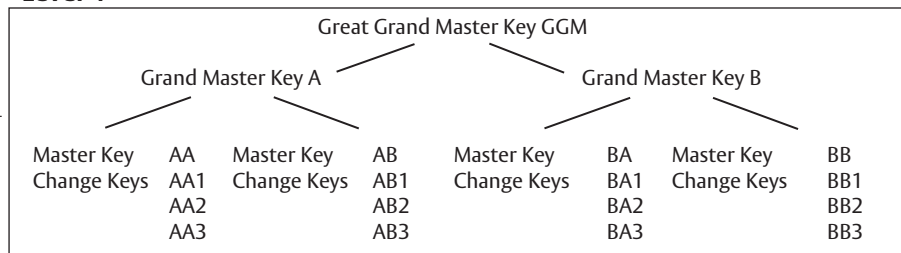
#### Level 2



#### Level 3



#### Level 4



\*\* Master key system levels greater than Level 4 are not recommended. Contact SARGENT Key Records for additional information