

4870 Series Deadbolts

Auxiliary Locks

SARGENT®

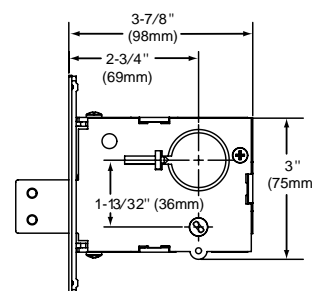
ASSA ABLOY

Specifications

For Doors	Door thickness 1-3/4" (44mm) standard (For thicker doors, consult factory)
Backset	2-3/4" (70mm) only
Strike	# 480 Strike Standard: 3-1/2" (89mm) x 1-1/8" (29mm); For Strike Box, specify WBS when ordering
Bolt	Laminated Stacked Steel Deadbolt with Hardened Pin and a 1" throw
Cylinder	Brass 6 pin. Two nickel silver keys per lock (Control key must be ordered separately, when required)
Cylinder Ring	97 Rosette (standard with #41 Cylinder), 1KB rosette optional (specify on order) NOTE: See 8200 Mortise Lock catalog (page 25) for details on cylinder collar kit.
Case	Heavy wrought steel, .093 thick, protected with a zinc dichromate finish
Outside Front Plate	Brass, bronze, stainless steel. 4-5/8" (117mm) x 1-1/8" (29mm) Adjustable for flat or beveled doors (bevel adjustment 1/8" (3mm) in 2" (51mm))
Hand	Non handed, field reversible (except for 74-)
Thumb Turn	130W ADA Thumb turn (standard); optional larger thumb turn (specify LB-)
UL/cUL Listed	Listed for use on fire doors
Mechanical Options	Cylinder Options see pages 9-10 28- 7710 Flat Lip Strike 4-7/8" (124mm) x 1-1/4" (32mm) ANSI A115-1 36- Torx® security screws 37- Spanner head security screws 74- Lock case wrapped in lead (specify hand) LB- Larger size ADA thumbturn SG- MicroShield® antimicrobial clear powder coat (only available with 32D) WBS- Wrought Box Strike
Finishes	03, 04, 09, 10, 10B, 10BE, 10BL, 20D, 32, 32D For other finishes consult factory



4870 Series Deadlock

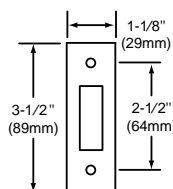


Any retrofit or other field modification to a fire rated opening can potentially impact the fire rating of the opening, and Sargent Manufacturing Company makes no representations or warranties concerning what such impact may be in any specific situation. When retrofitting any portion of an existing fire rated opening, or specifying and installing a new fire-rated opening, please consult with a code specialist or local code official (Authority Having Jurisdiction) to ensure compliance with all applicable codes and ratings.

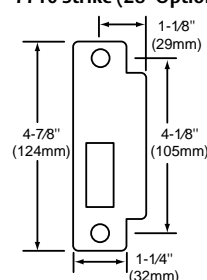
How To Order

10-28-	4874	26D
Options	Series x Function	Finish
Mechanical Options this page	4874	03, 04, 09, 10, 10B, 10BE, 10BL, 26, 26D, 32 & 32D
	4875	
Cylinder Options page 9-10	4876	
	4877	
	4878	
	4879	

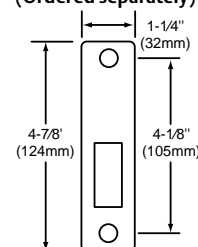
**480 Strike
ANSI A115.5
(Standard)**



7710 Strike (28-Option)

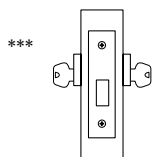


**7730 Strike
(Ordered separately)**



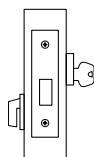
Functions

4874 Double Cylinder



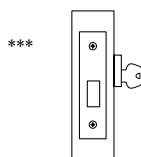
- Key from either side operates deadbolt
- **ANSI E06061**

4875 Single Cylinder x Turn Lever



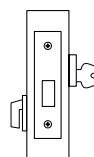
- Key outside operates deadbolt
- Thumb turn inside operates deadbolt
- **ANSI E06071**

4876 Single Cylinder



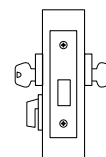
- Key outside operates deadbolt
- No inside operation
- **ANSI E06081**

4877 Classroom x Turn Lever



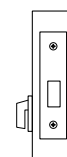
- Key outside operates deadbolt
- Thumb turn inside retracts deadbolt, but will not project it
- **ANSI E06091**

4878 Public Toilet



- Key from either side operates deadbolt
- Thumb turn inside retracts deadbolt, but will not project it

4879 Exit Lock



- Thumb turn inside operates deadbolt
- No outside operation

*** For use only on rooms with more than one exit

Cylinder Options by Product Line

Auxiliary Locks

Cylinder Type	Option	Description	8200 & 4870 Deadbolt	480 Dead Bolt	470 Dead Bolt	758 & 858 Padlocks	856 & 857 Padlocks	1655 Locker Lock	4141-4143 Utility & Cabinet Locks	4152, 4153, 4253 Utility Locks
Large Format Interchangeable Core (Removable Core)	60-	Hardware to accept Permanent LFIC (Removable Core), Disposable plastic Core provided (Permanent Cores Ordered Separately)	Yes	Yes	N/A	Yes	N/A	N/A	N/A	N/A
	63-	6 pin LFIC permanent core provided	Yes	Yes	N/A	Yes	N/A	N/A	N/A	N/A
	64-	Hardware supplied with Keyed LFIC construction core to accept Permanent LFIC Core (ordered Separately)	Yes	Yes	N/A	Yes	N/A	N/A	N/A	N/A
Small Format Interchangeable Cores	70-	Hardware to accept 6 or 7 Pin SFIC Permanent Cores (ordered separately), plastic disposable core provided	Yes	Yes	N/A	N/A	N/A	N/A	N/A	N/A
	72-	Hardware to accept 6 or 7 Pin SFIC supplied with Keyed Construction Core. (Permanent Core Ordered separately)	Yes	Yes	N/A	N/A	N/A	N/A	N/A	N/A
	73-	Hardware supplied with 6 pin SFIC (Includes masterkeying, grand masterkeying)	Yes	Yes	N/A	N/A	N/A	N/A	N/A	N/A
	65-73-	Hardware provided to accept Uncombined 6 pin SFIC (Permanent) Core - (Packed Loose for field keying)	Yes	Yes	N/A	N/A	N/A	N/A	N/A	N/A
	65-73-7P-	Hardware provided to accept Uncombined 7 pin SFIC (Permanent) Core - (Packed Loose for field keying)	Yes	Yes	N/A	N/A	N/A	N/A	N/A	N/A
	73-7P-	Hardware supplied with Small Format 7 Pin Interchangeable Core (Includes masterkeying, grand masterkeying)	Yes	Yes	N/A	N/A	N/A	N/A	N/A	N/A
Keso F1 & Keso	81-	Hardware provided with housings to accept Keso (83) & Keso F1 (F1-83-) removable cores. (Permanent Cores Ordered Separately)	Yes	N/A	N/A	N/A	N/A	N/A	N/A	Std.
	82-	Hardware provided with standard Keso Security Cylinder	Yes	N/A	N/A	N/A	Std	N/A	N/A	N/A
	F1-82-	Hardware provided with standard Keso F1 Security Cylinder (Patented)	Yes	N/A	N/A	N/A	Specify F1-	N/A	N/A	Specify F1-
	83-	Hardware supplied with SARGENT Keso Security Removable Core cylinder	Yes	N/A	N/A	N/A	N/A	N/A	N/A	N/A
	F1-83-	Hardware supplied with SARGENT Keso F1 Security Removable Core cylinder (Patented)	Yes	N/A	N/A	N/A	N/A	N/A	N/A	N/A
	84-	Hardware provided with SARGENT Keso Construction Cores (Permanent Removable Cores ordered separately)	Yes	N/A	N/A	N/A	N/A	N/A	N/A	N/A
Bump Resistant	BR-	Bump Resistant Cylinder (Available with Conventional & Conventional XC Cylinders Only)	Yes	Yes	Yes	Yes	N/A	N/A	N/A	N/A
Less Cylinder	LC-	Less Cylinder	Yes	Yes	Yes	N/A	N/A	N/A	N/A	N/A
Schlage Keyways	SC-	Schlage C keyway cylinder, 0 bitted	Yes	Yes	Yes	Yes	N/A	N/A	N/A	N/A
	SE-	Schlage E keyway cylinder, 0 bitted	Yes	Yes	Yes	Yes	N/A	N/A	N/A	N/A

NOTE: For V-10 Cylinder and information, contact ASSA

NOTE: When tying into existing key systems contact Key Records for compatibility

+ For use in SARGENT hardware ordered to accept XC- option