

PIVOTS AND PIVOT SETS

CENTER HUNG TOP PIVOTS

RIXSON®
ASSA ABLOY

MODEL 320

Application

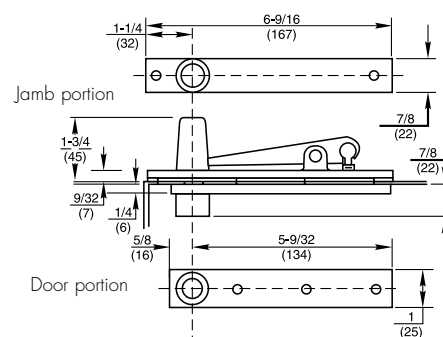
- Fully Concealed
- Non-handed



Product Description & Features

- Standard top pivot for Models 127-3/4, 128-3/4, and 176 pivot sets
- Walking beam-type pivot – 1/2" (13mm) diameter pivot pin with 3/4" (19mm) engagement
- Oil-impregnated sintered bronze bushing
- Completely concealed when door is closed
- Furnished with wood and machine screws
- Available with longer than standard pivot pins. Increments are 1/4" (6mm), 1/2" (13mm), 3/4" (19mm) only

Technical Information



MODEL 340

Application

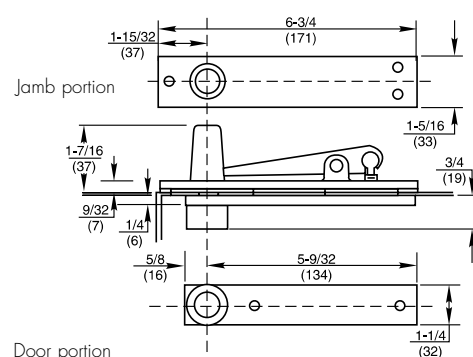
- Fully Concealed
- Non-handed



Product Description & Features

- Standard top pivot for Models 370 and 117-3/4 pivot sets. Also used for 28, 30, 40 and 50 Series floor closers
- Walking beam-type pivot – 1/2" (13mm) diameter pivot pin with 3/4" (19mm) engagement
- Oil-impregnated sintered bronze bushing
- Completely concealed when door is closed
- Furnished with wood and machine screws
- Available with longer than standard pivot pins. Increments are 1/4" (6mm), 1/2" (13mm), 3/4" (19mm) only

Technical Information



MODEL H340

Application

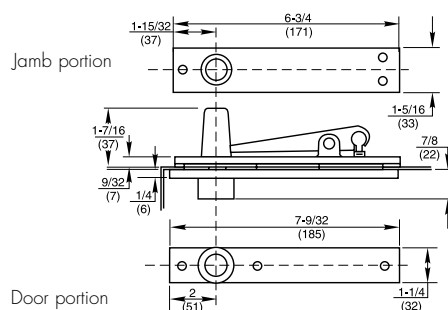
- Fully Concealed
- Heavy-Duty
- Non-handed



Product Description & Features

- Standard top pivot for Model H117-3/4 pivot set. Also used for H28 and H40 Series floor closers
- Can be used with any floor closer or pivot set with pivot point 2-3/4, or greater, from edge of the door
- Walking beam-type pivot – 11/16" (17mm) diameter pivot pin with 3/4" (19mm) engagement
- Heavy-duty needle bearing
- Completely concealed when door is closed
- Furnished with wood and machine screws
- Available with longer than standard pivot pins. Increments are 1/4" (6mm), 1/2" (13mm), 3/4" (19mm) only

Technical Information



Prefix	Model	Offset	Center Hung	Standard Top Pivot	Available 3-Hour Fire Rated Doors	Handed	Maximum Door Weight**
	117-1/4	Yes	No	180	No	Yes	250
F	117	Yes	No	180	Yes	Yes	300
	173	Yes	No	180	No	Yes	150
	173 x 1-1/2	Yes	No	180	No	Yes	100
F	117 x 1-1/2	Yes	No	180	Yes	Yes	150
F	147	Yes	No	180	Yes	Yes	600
F	147 x 1-1/2	Yes	No	180	Yes	Yes	350
F*	L147	Yes	No	L180	Yes*	Yes	800
F	547	Yes	No	NA	Yes	Yes	500
	165	Yes	No	H180	No	Yes	300
	195	Yes	No	180	No	Yes	450
F	117-1/2	Yes	No	180	Yes	Yes	650
F	117-1/2 x 1-1/2	Yes	No	180	Yes	Yes	450
F*	L117	Yes	No	L180	Yes*	Yes	1750
	127-3/4	No	Yes	320	No	No	200
	128-3/4	No	Yes	320	No	No	250
	370	No	Yes	340	No	No	500
	117-3/4	No	Yes	340	No	No	600
	H117-3/4	No	Yes	H340	No	No	1000
	H117-3/4 x 587	No	Yes	H340	No	No	1000
	176	No	Yes	320	No	No	150
	178	No	Yes	Special	No	No	175

*For 1-3/4" doors only

**Weight for offset product is based on 3/4" offset and the use of an intermediate pivot.

HOW TO ORDER

Prefix	L147 Model	3/4" Offset	x LTP x 2-1/4 dr Suffix	x RH Hand	x 626 Finish
F Fire-Rated Doors	117-1/4 117 173 147 L147 547 165 195 117-1-1/2 L117 127-3/4 128-3/4 370 117-3/4 H117-3/4 176 178	3/4" 1-1/2" Blank - Center Hung	587 CH Arm for 1-3/4" Dr -Extended Spindles -Longer Top Pivot Pins LTP Less Top Pivot -20 20-Minute Label -Cover Pan (xDepth) SPLO Special Layout # -Door Thickness - L Product	RH Right Hand LH Left Hand Blank - Center Hung	605 Bright Brass 606 Satin Brass 611 Bright Bronze 612 Satin Bronze 613 Dark Bronze 613E Dark Oxidized Satin Bronze - equivalent 618 Bright Nickel 619 Satin Nickel 622 Flat Black 625 Bright Chrome 626 Satin Chrome

*specify finish