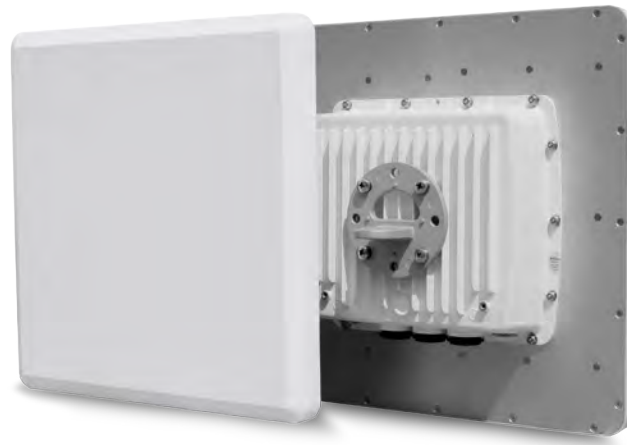


Tsunami® MP-10250-BSX

Advanced Point-to-Multipoint Wireless Base Station



Implementing Intelligent Technologies with Tsunami® MP-10250-BSX

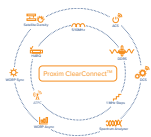
Proxim Wireless is a leader and an early innovator in wireless technology providing high-speed, long-range and mobile broadband wireless solutions.

The Tsunami® MP-10250-BSX is an intelligent base station that combines a beam steering (BeamX™) antenna and a scan radio (Proxim SmartScan™) with the very high throughput, high power, robust and especially reliable Tsunami® 10000 product line. This product delivers a solution that is extremely robust in the face of interference, delivers more Mbps at a given point in the network and opens up additional 5GHz spectrum.

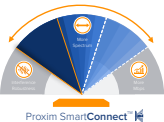
The Tsunami® MP-10250-BSX supports the following features specifically for last miles access or video surveillance application that need advanced QoS, interference resistant, broadband wireless access:



Proxim WORM®, a highly evolved QoS platform tailored to deliver voice, video and data applications



Proxim ClearConnect™, a suite of different techniques all working together to ensure robust and reliable radio communications in noisy deployments



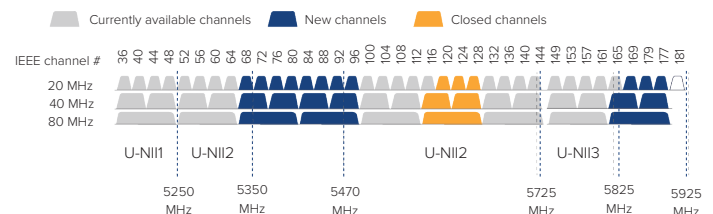
Proxim SmartConnect™, next generation improvements that anticipates disturbances to optimize performances

World Class Performance

- Point-to-Multipoint base station that delivers up to 866 Mbps data rate and covers distances up to 10 miles (16 km)
- AES 128 encryption, Radius authentication and highly-secure remote management via SSL/TLS1.2, SSH and SNMPv3
- Service flow based QoS with deep packet inspection (DPI) to ensure that the most important data arrives with priority
- Built-in feature rich network protocols for IPv4 and IPv6 bridging, routing and gateway functionality

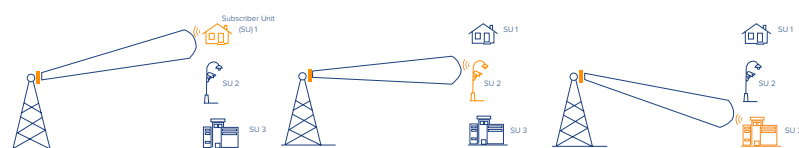
Proxim SmartScan™

- Performs background analysis of the full RF spectrum and creates channel availability tables to allow an immediate switch to a free channel in case of weather radar detection or heavy interference
- By removing the initial transmission delay, SmartScan makes DFS channel more efficient.
- It also opens access to the 5.600–5.650 GHz sub-band, and enables effective use of up to 355 MHz of DFS spectrum.



BeamX™ Antenna

- Smart antenna delivering a 17° beam that electronically steers itself to the remote subscriber unit over 60° sector, to limit interferences from nearby RF sources
- By improving the radio Signal to Noise Ratio (SNR), BeamX enables higher modulations and thus improves throughput.



Product Line Compatibility

- Connects to all existing Tsunami® MP10100, MP-10100L, MP-8200, MP-820 and MP-830 products
- Fully integrates within ProximVision® Advanced Cloud Based Carrier Management System and Controller