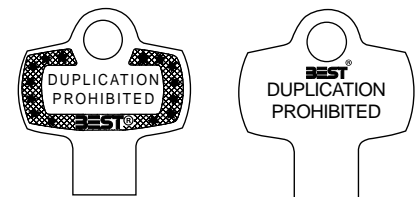


KEYS: SECURITY, CONTROL AND CONVENIENCE

The unique way a key and core come together is the foundation of how every opening is secured. With our unique combining and keying, our distributors can ensure keys and cores work together in a way that not only ensures the integrity of every opening, but also makes them easy to maintain and manage over the life of the product.

We understand that choosing a key system is about more than the hardware installed on doors. It's about deploying a security philosophy with various product offerings that allow the customer to manage various access levels, permission rights and key management processes.

At BEST, we have patented and non-patented key systems that help you implement a robust and responsive security protocol. And best of all, we have significant experience in the industry to help you develop a system and approach that is custom-tailored to your facility and your people.



KS473 Key Stamp
Standard front
key stamp for
Standard keys

KS208 Key Stamp
Alternative front
key stamp for
Standard keys



KS567 Key Stamp
Standard front
key stamp for
Premium keys*



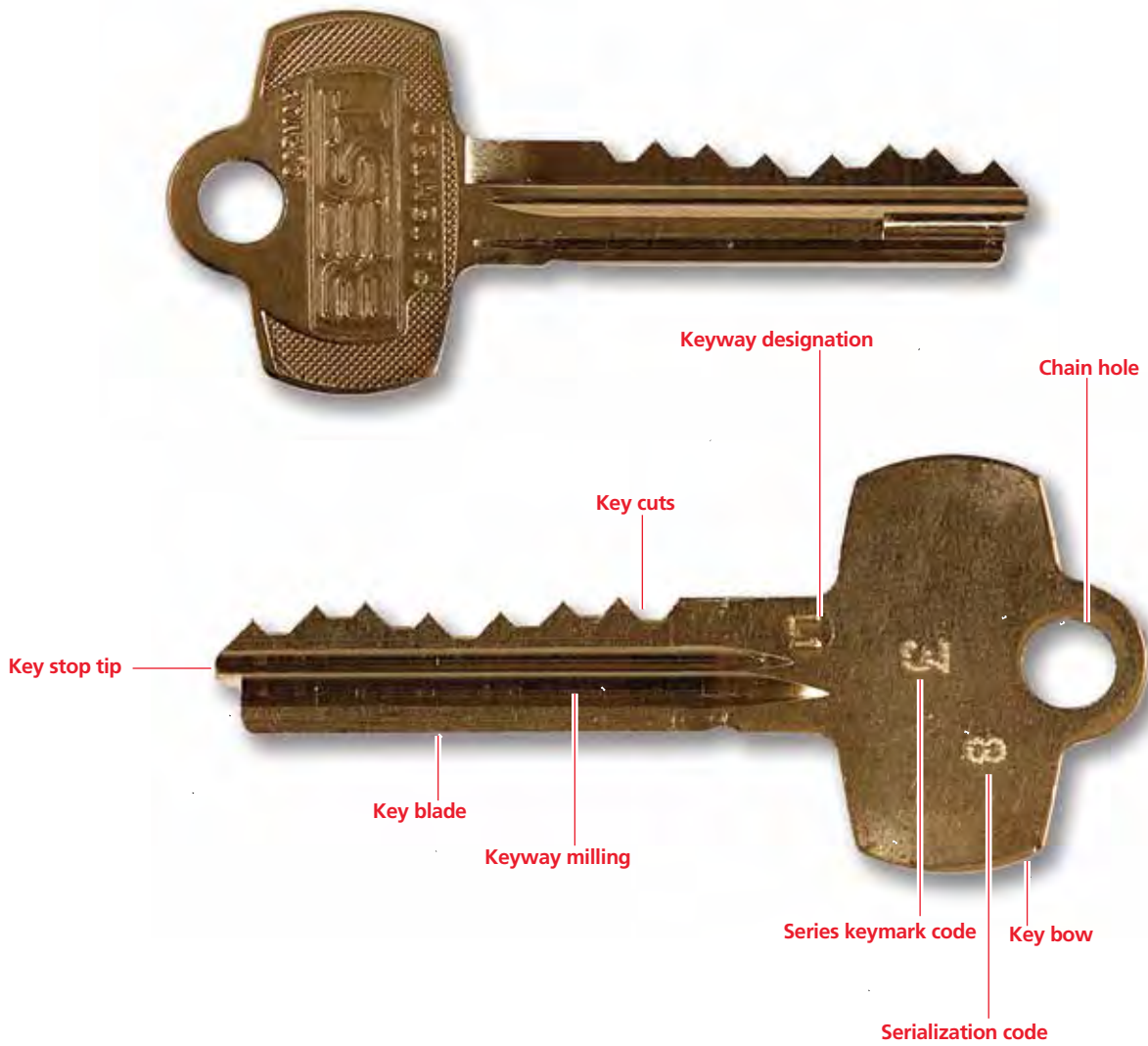
KS609 Key Stamp
Alternative front
key stamp for
Premium keys*



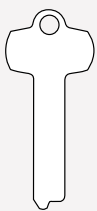
KS594 Key Stamp
Alternative front
key stamp for
Premium keys*

Keys can be personalized to an institution or organization. In addition to making them easier to identify, key stamping protects them against unauthorized duplication. Key stamping is provided for a one-time fee.

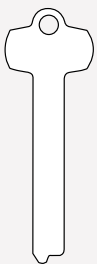
**There is no standard back key stamp for the TAP premium key*



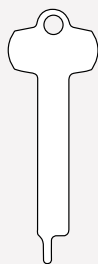
KEY TYPES



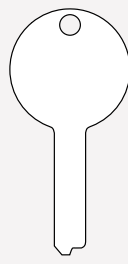
1A
Standard



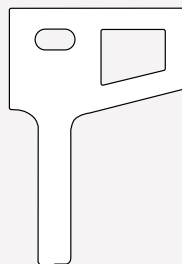
1A
Long Blade



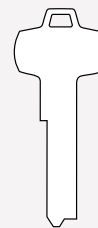
1A
Long Nose



2A
Round Bow
Available with/without
chain hole



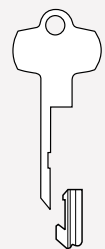
4A
Access Bow
Comes with/without
window for plastic insert



1AP
Premium
For use with
1CP core



3AP
Rectangular Bow



9A
Blockout Blade
with Extractor Key