

## TABLE OF CONTENTS

	Page		Page
1E Series features.....	2	Eurocylinders.....	7
1E Series specs/how to order.....	2	Cylinders and cams.....	8
1E Series rings/spindles/mortise/service equipment.....	3	1E Cylinder special rings.....	9
1E Series special cylinders.....	4, 5	5E Series specs/accessories.....	10
1EJ7J4/1EK7K4 high security cylinders.....	6	5E Series how to order.....	11
Patented keying system.....	6	1E Series how to order (continued).....	12

## 1E SERIES — FEATURES

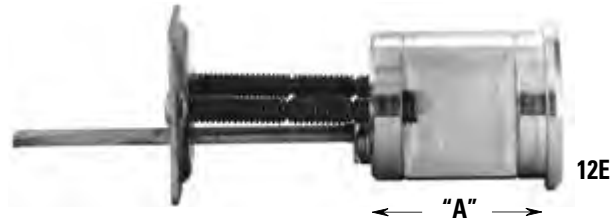
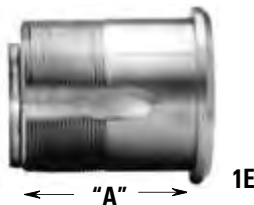
## 1E Mortise Cylinder

Standard mortise applications require use of BEST's 1E series cylinders with standard 1E-C4 cam. BEST cylinders may be altered to function with other manufacturers' locks by use of different cams (see page 8) and different cylinder rings (see page 9). Special cylinder variations are available for most applications (see pages 4 & 5). BEST cylinders are machined from brass or bronze bar stock and are available in a variety of finishes. Additional security is provided by a set screw that mounts diagonally in the cylinder wall and when tightened, holds the cylinder securely in the housing. BEST mortise cylinders feature the BEST interchangeable core and may be master-keyed into any existing BEST system. Contact your local Stanley Security Solutions sales office for information on special cylinder applications not listed in this catalog.



## 12E Rim Cylinder

Standard rim cylinder applications require the use of BEST's 1E rim cylinder series. BEST rim cylinders are interchangeable with other manufacturers' rim cylinders. BEST rim cylinders are machined from solid bar stock and are available in a variety of finishes. The standard package for the BEST rim cylinder includes cylinder, RP3 ring package, 1E-S2 spindle, clamp plate and clamp plate screws. BEST rim cylinders feature the BEST interchangeable core and may be masterkeyed into any existing Best system.



## Specifications

Cylinder Nomenclature	Dimension "A"	Door Thickness
1E-64	1 1/8"	1 5/8" to 2 1/4"
1E-74	1 1/4"	1 3/8" to 2 1/2"

Cylinder diameter— 1 5/32"

To order: example: **1E74-C4-RP3-626**

Products covered by on or more of the following patents:  
5,590,555 5,794,472

## Specifications

Cylinder Nomenclature	Dimension "A"	Door Thickness
12E62	1 3/16"	1" to 2 3/4"
12E72	1 11/32"	1 1/4" to 3"

Cylinder diameter— 1 5/32"

To order: example: **12E72-S2-RP3-626**

## 1E SERIES HOW TO ORDER

1E	7	4		C4	RP3	626	**
Series	Core Housing	Function Code	Length Code	Cam or Spindle	Rings	Finish	
See p. 12	0— dummy 6— 6-pin 7— 7 pin housing accepts all Best cores	See p. 12	(1E74 only) Blank— Standard 22— 1 3/8" 24— 1 1/2" up to 6"	C4— Standard cam C181— Adams Rite MS cam S2— Standard spindle	RP— Rim cylinder RP1— Tapered cylinder RP2— 6 pin mortise RP3— 7 pin mortise RP4— 3E mortise	626 690 Satin* 606 612 613 619 Bright* 605 611 625	
			(See page 4-5) (See code below)	(For special cams see page 8)	(For special rings see page 9)		

\*Indicates extra cost

\*\* Must specify keymark and number of keys or designate L/C for less core.



MORTISE AND

## STANDARD RINGS

### RP Standard Ring Package

The RP standard ring package includes a 1E-R3 ( $\frac{3}{16}$ " ) and 1E-R5 ( $\frac{3}{8}$ " ) ring.



### RP Standard Ring Package

The RP standard ring package includes a 1E-R3 ( $\frac{3}{16}$ " ) and 1E-R5 ( $\frac{3}{8}$ " ) ring.



### RP3 Ring Package

The RP3 ring package for the 1E-62, 1E-72 and 1E-74 cylinders includes a 1E-R2 ( $\frac{1}{8}$ " ) and a 1E-R5 ( $\frac{3}{8}$ " )



### RP5 Ring Package

The RP5 ring package for the 1E-62, 1E-72 and 1E-74 cylinders includes a 1E-R2 ( $\frac{1}{8}$ " ), 1E-R4 ( $\frac{1}{4}$ " ) and a 1E-R5 ( $\frac{3}{8}$ " )



# RIM CYLINDERS

## STANDARD CAM

### Standard Cam for 1E-64, and 1E-74 Mortise Cylinders

Unless otherwise specified, the 1E-C4 cam plied on all 1E mortise cylinders.

Commonly used cams are listed on page 8.



If a cam other than the variety listed is needed, a sample cam should be forwarded to your local BEST office along with the lock manufacturer's name and lock series or identification number.

## SPINDLES



**1E-S2 Spindle (Steel)** - A-40100-SH

**1E-S3 Spindle (Bronze)** - A-40100-Z

**5" Spindle** - A-54950;  $\frac{5}{32}$ " **Spindle** - A-40101

The 1E-S2 flat spindle is supplied standard on all 1E rim cylinders. If marine application is necessary, request "marine construction" (1E-S3 bronze spindle and non-ferrous materials supplied). A five (5) inch spindle is available for thick door applications.

## MORTISE SERVICE EQUIPMENT



ED211



ED212

### ED211 Mortise Cylinder Wrench

The BEST mortise cylinder wrench and test handle is an essential dual-purpose tool. The double end is used primarily to install or remove BEST mortise cylinders without marring the cylinder surface finish. The single end may be used to test the lock operation, as well as align the throw pins.

**To order specify: ED211 mortise cylinder wrench.**

### ED212 Mortise Cylinder Cam Assembly Tool

Mortise cylinder cams are quickly changed with the use of this tool. Approximate length  $1\frac{3}{4}$ ".

**To order specify: ED212 assembly tool.**

### ED221 Mortise Cylinder Thread Repair Die

Tool for re-threading  $1\frac{5}{32}$ " diameter cylinders.

**To order specify: ED221 thread repair die.**

### ED222 Cylinder Cam Testing Tool

Special cylinder / wrench assembly. Screws provide rapid means to install cams for testing.

**To order specify: ED222 cam testing tool.**

### ED225 Hole Tap For $1\frac{5}{32}$ " Mortise Cylinder

Tap tool used to re-thread housing threads for 1E mortise cylinders.

**A40095 Standard Throw Pins**



## SPECIAL CYLINDERS

### Special Length Mortise Cylinders Specifications

**Diameter:** 1  $\frac{5}{32}$ "

**Uses:** Special thickness doors

**Length:** See chart

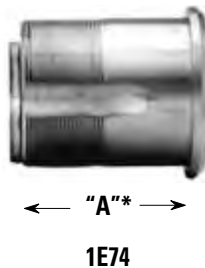
**Material:** Solid brass or bronze

**Cam:** Standard 1E-C4 cam (see page 2) supplied unless otherwise specified.

**Rings:** The RP2 (for 6 pin) and RP3 (for 7 pin) package are supplied standard (page 2) unless otherwise specified.

**To order:** Designate desired length from chart under length code step "D" as shown (page 2).

**Example:** 1E-74-32



Mortise Cylinder Length Chart		
Length "A"	Designate this number on step "D" of order procedure (page 2)	
1 $\frac{3}{8}$ "	22	Riveted cams
1 $\frac{1}{2}$ "	24	
1 $\frac{5}{8}$ "	26	
1 $\frac{3}{4}$ "	28	
1 $\frac{7}{8}$ "	30	
2"	32	Screw-on cams
2 $\frac{1}{8}$ "	34	
2 $\frac{1}{4}$ "	36	
2 $\frac{1}{2}$ "	40	
2 $\frac{3}{4}$ "	44	
3"	48	
3 $\frac{1}{2}$ "	56	
4"	64	
4 $\frac{1}{2}$ "	72	
5"	80	
5 $\frac{1}{4}$ "	88	
6"	96	

\*ONLY AP TO 1E74

### 1 $\frac{1}{2}$ " Diameter Mortise Cylinder Specifications

**Diameter:** 1  $\frac{1}{2}$ "

**Length:** 6 pin-1  $\frac{1}{8}$ " ; 7 pin-1  $\frac{1}{4}$ "

**Door thickness:**

6 pin-1  $\frac{3}{8}$ " to 2  $\frac{1}{4}$ " (includes trim)

7 pin-1  $\frac{1}{8}$ " to 2  $\frac{1}{2}$ "

**Material:** Solid brass or bronze

**Cam:** Standard 3E-C3 cam supplied unless otherwise specified.

**Rings:** The RP4 ring package is supplied with 3E cylinders. This package includes a 3E-R2 (  $\frac{1}{8}$ " ) and a 3E-R4 (  $\frac{1}{4}$ " ) ring.

**To order:** Designate "3E" on step "A" of order procedure (page 2) **Example:** 3E-74-C3-RP4-626

**Options:** 3E-04-Dummy, 3E-7A4-Turn knob, 3E-7B4-Dust Cover.

Adaptor ring to allow 1E74 cylinders to fit a 3E tapped hole - A26139.



### Taper Head Mortise Cylinder Specifications

**Diameter:** 1  $\frac{5}{32}$ "

**Length:** 6 pin -  $\frac{23}{32}$ " ; 7 pin -  $\frac{3}{4}$ "

**Door thickness:** 6 pin- 1  $\frac{3}{8}$ " to

1  $\frac{3}{4}$ " (including trim)

7 pin- 1  $\frac{3}{8}$ " (including trim)

7 pin- 1  $\frac{3}{4}$ " (without trim)

**Material:** Solid brass or bronze

**Cam:** Standard 1E-C4 cam supplied unless otherwise specified.

**Rings:** The RP1 ring package (page 2) is supplied standard with all 1E taper cylinders (page 2).

**To order:** See page 2. **Example:** 1E-76-C181-626



### Dummy Mortise and Rim Cylinders Specifications

**Diameter:** 1  $\frac{5}{32}$ "

**Length:** Mortise -1  $\frac{1}{8}$ " ; Rim -1  $\frac{1}{8}$ "

**Material:** Solid brass or bronze

**Rings:** Ring packages are supplied standard as follows:

**Mortise:** RP2 ring package(see page 2)

**Rim:** RP3 ring package (see page 3)

**To order:** Designate "0" on step "B" of order procedure (page 2)

**Example:** 1E-02

E04-slot in back-1ESPL-6-B4619

1E04-slot in back-1ESPL-7-B4620

1E02-slot in face-1ESPL-6-A5035

Special 1E04 with slot on back- 1ESPL-7-B4620

Special length 1E04 cylinders:

1  $\frac{1}{2}$ " - 1ESPL-7-A9619

1  $\frac{3}{4}$ " - 1ESPL-7-A20331



1E04

12E02

\* Reference to Length "A" on Mortise Cylinder Length Chart.

### Turn Knob Cylinders Specifications

**Diameter:** 1  $\frac{5}{32}$ "

**Length:** Mortise- 6 pin-1  $\frac{1}{8}$ " ; 1EA6A4

Rim- 6 pin-1  $\frac{3}{16}$ " - 1EA6A2

**Material:** Solid brass or bronze

**Cam:** Standard 1E-C140 cam supplied unless otherwise specified (see page 2).

**Rings:** Ring packages are supplied standard as follows (unless otherwise specified):  
Mortise 6 pin: RP2 ring package (see page 2)

**To order:** Designate "A4" on step "C" of order procedure (page 2).

**Example:** 1EA-6A4-C140-RP3-626

R-function turn knob cylinders

RH-1ESPL-6-B35401

LH-1ESPL-6-B35405

Special length cylinders

1.5"-1ESPL-6-A20336

1.75"-1ESPL-6- A20337

2"- 1ESPL-6-B23409



1EA6A

\*ADA Turn Knob Shown

**NOTE:** These should not be used in conjunction with deadbolt function BEST mortise locks. To order the old style "UP" thumb turn contact your local BEST dealer.

**Mortise and Rim Cylinders with Dust Covers Specifications****Diameter:** 1  $\frac{5}{32}$ "**Length:** Mortise- 6 pin- 1  $\frac{1}{8}$ " ; 7 pin- 1  $\frac{3}{32}$ "**Rim-** 6 pin- 1  $\frac{3}{16}$ " ; 7 pin- 1  $\frac{11}{32}$ "**Material:** Solid brass or bronze**Cam:** Standard 1E-C4 cam (see page 4) 1E series supplied unless otherwise specified.**Rings:** Ring packages are supplied standard as follows (unless otherwise specified):

Mortise 6 pin: RP2 ring package (see page 2),

Mortise 7 pin: RP3 ring package (see page 2)

Rim 6 and 7 pin: RP3 ring package (see page 2)

**To order:** Designate "B4" on step "C" of order procedure (page 2).**Example:** 1EB 7B4 C4 RP3 626

1EB7B4

**Mortise Cylinder Direct Motion Cam Specifications****Diameter:** 1  $\frac{5}{32}$ ", slabbed, threaded to the head**Length:** 6 pin- 1  $\frac{5}{16}$ " ; 7 pin- 1  $\frac{15}{32}$ "

From head to cam

**Material:** Solid brass or bronze**Cam:** C228 - cabinet cylinder cam standard. Cam prevents key from being withdrawn in unlocked position.**Rings:** The RP2 ring package is supplied standard for 6-pin and 7-pin unless otherwise specified (page 2)**To order:** Designate "D4" on step "C" of order procedure (page 2).**Example:** 1ED 7D4 C228 RP3 626To order with a utility cam lengths from  $\frac{5}{8}$ " - 3  $\frac{1}{2}$ "1  $\frac{3}{4}$ " - cylinder length (RH) 1ESPL-7-A10623 x C228

(LH) 1ESPL-7-A10624 x C228

2  $\frac{3}{4}$ " - cylinder length (RH) 1ESPL-7-A8774 x C228

1ED7D4

**Standard Mortise Cylinder Lost Motion Cam Specifications****Diameter:** 1  $\frac{5}{32}$ "**Length:** 6 pin- 1  $\frac{1}{8}$ " ; 7 pin- 1  $\frac{1}{4}$ "**Material:** Solid brass or bronze**Cam:** 1E-C230 - cam supplied standard  
1E-C230 is cam 1E-C4 (page 2) set up for lost motion. Specify cylinder handing as for hand and side of door.**Examples:** RHO (Right Hand Outside); RHI (Right Hand Inside); LHO (Left Hand Outside); LHI (Left Hand Inside).**Rings:** The RP2 ring package is supplied standard for 6-pin and 7-pin unless otherwise specified (page 2)**To order:** Designate "F4" on step "C" of order procedure (page 2).**Example:** 1EF 7F4 C230 RP3 626 RHO

1EF7F4

**Square Head Mortise Cylinder-Wrench Resistant For use in Narrow Stile Doors Specifications****Diameter:** 1  $\frac{5}{32}$ "**Length:** 6 pin- 1  $\frac{1}{4}$ " ; 7 pin- 1  $\frac{13}{32}$ "**Material:** Solid brass or bronze**Cam:** As specified on order  
(see page 8 for cams available)**Rings:** Package includes special  $\frac{5}{8}$ " slip ring**To order:** Designate "C4" on step "C" of order procedure (page 2)**Example:** 1EC 7C4 C181CR1010 626R1010 is  $\frac{5}{8}$ " length. Other length rings are available.

1EC7C4

**Slabbed Cabinet Mortise Cylinder Lost Motion Cam Specifications****Diameter:** 1  $\frac{5}{32}$ "**Length:** 6 pin- 1  $\frac{1}{8}$ "

(effective length)

7 pin- 1  $\frac{1}{4}$ " (effective

length)

**Material:** Solid brass or bronze**Cam:** C229- cam

supplied unless

otherwise specified (1E-C229, when ordered separate from unit). Specify hand: RH or LH

**Rings:** The RP2 ring package is supplied standard for 6 and 7-pin unless otherwise specified (page 2)**To order:** Designate "E4" on step "C" of order procedure (page 2).**Example:** 1EE 7E4 C229 RP3 626 RH**Special Length:**2" cylinder length (1  $\frac{3}{4}$ " effective length)

RH-1ESPL-7A-9580;

LH-1ESPL-7A-9577

2  $\frac{1}{4}$ " cylinder length (2" effective length)

RH-1ESPL-7-A8813;

LH-1ESPL-7-A8812

1EE7E4  
\*LH Shown**Hotel/Motel Mortise Cylinder Shifting Cam Specifications****Diameter:** 1  $\frac{5}{32}$ "**Length:** Mortise 6 pin- 1  $\frac{5}{16}$ " ;7 pin- 1  $\frac{5}{32}$ "**Material:** Solid brass or bronze**Cam:** C258 or cam supplied as specified (see page 8)**Rings:** The RP2 ring package is supplied standard for 6-pin and 7-pin unless otherwise specified (page 2)**To order:** Designate "G4" on step "C" of order procedure (page 2).**Example:** 1EF 7G4 C258 RP3 626

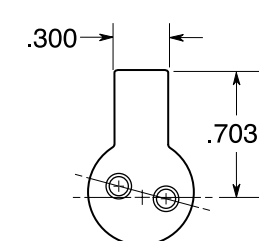
1EG7G4

## CYLINDERS AND CAMS

Special cams are available which will operate most mortise locksets, regardless of make or function. With these cams, your masterkeyed system can be extended through the use of replacement cylinders with cams similar to those being used. A few of the cams are illustrated. Other designs are available upon request. All cams available are designed for use on BEST mortise cylinders.

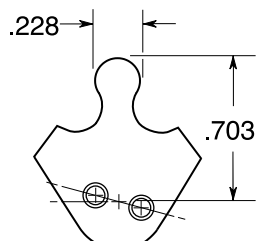
**WARNING**– Best Access Systems desires to provide up-to-date and reliable product adaptation uses. However, BEST cannot guarantee the quality of other manufacturers' locksets. In addition, other lock manufacturers' may make changes to their product that affect the operation and compatibility of our core and cylinder adaptation. When this occurs, those manufacturers' have no obligation to notify BEST. If you are using a BEST cylinder in another manufacturers' lockset and find that it does not operate properly for any reason, please contact your local BEST sales office immediately.

**NOTE:** Cams not drawn to scale



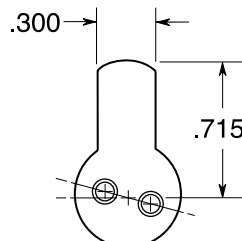
**C4**

(when ordered with cylinder,  
step E, page 2) 1E - C4  
(for cam only)



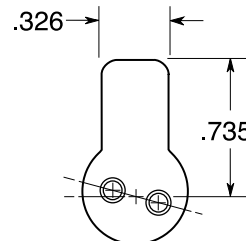
**C118**

(when ordered with cylinder,  
step E, page 2) 1E - C118  
(for cam only)



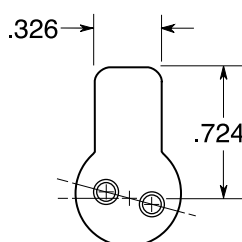
**C127**

(when ordered with cylinder,  
step E, page 2) 1E - C127  
(for cam only)



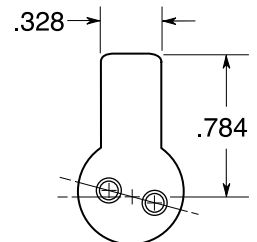
**C128**

(when ordered with cylinder,  
step E, page 2) 1E - C128  
(for cam only)



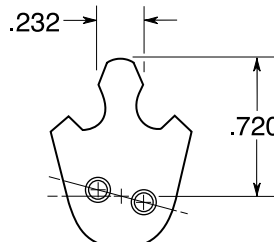
**C129**

(when ordered with cylinder,  
step E, page 2) 1E - C129  
(for cam only)



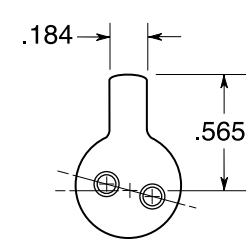
**C136**

(when ordered with cylinder,  
step E, page 2) 1E - C136  
(for cam only)



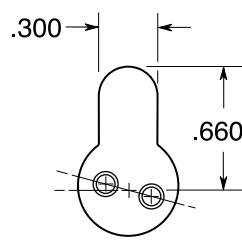
**C161**

(when ordered with cylinder,  
step E, page 2) 1E - C161  
(for cam only)



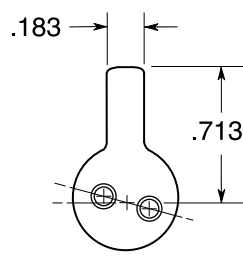
**C181**

(when ordered with cylinder,  
step E, page 2) 1E - C181  
(for cam only)



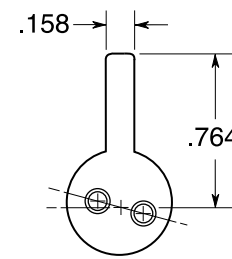
**C191**

(when ordered with cylinder,  
step E, page 2) 1E - C191  
(for cam only)



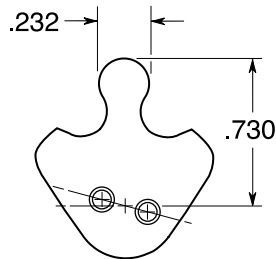
**C208**

(when ordered with cylinder,  
step E, page 2) 1E - C208  
(for cam only)



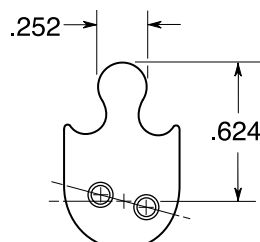
**C210**

(when ordered with cylinder,  
step E, page 2) 1E - C210  
(for cam only)



**C258**

(when ordered with cylinder,  
step E, page 2) 1E - C258  
(for cam only)



**C265**

(when ordered with cylinder,  
step E, page 2) 1E - C265  
(for cam only)

**NOTE:** While certain functions may require a different cam, in general the following cams will work for these common applications.

C4 Standard cam  
C127 Arrow mortise (latch)  
C161 Corbin-Russwin mortise  
Arrow mortise (deadbolt)  
C181 Adams Rite

C191 Best 30H mortise (latch)  
C208 Sargent  
C258 Best 45H mortise  
C258 Best 30H mortise (deadbolt)  
C265 Schlage L mortise



**1E SERIES HOW TO ORDER**

Series/Description		Function or Length Code
1-5/32" Diameter Cylinders		
12E	Standard rim	2
1E	Standard mortise	4
	Tapered mortise	6
	Dummy rim / mortise (0-pin only)	02/04
1EA	Turn knob-rim / mortise (6-pin only)	A2/A4
1EB	Rim / mortise with dust cover	B2/B4
1EC	Square head mortise	C4
1ED	Slabbed direct motion (7-pin only)	D4
1EE	Slabbed lost motion (7-pin only) (Specify RH or LH hand.)	E4
1EF	Standard lost motion (Note 1)	F4
1EG	Hotel shifting cam	G4
1EJ	High security UL-listed (7-pin only **)	J4
1EK	High security Non-UL (7-pin only**)	K4
3E	Mortise-1-1/2" diameter (7-pin**)	4

\*\* Only Standard and CORMAX M Series keying available on 1EJ and 1EK cylinders.



**Stanley Security Solutions**, a business division of Stanley Black & Decker, is a provider of integrated access control and security solutions for institutional, commercial and industrial businesses and organizations. Stanley Security Solutions delivers a comprehensive suite of security products, software and integrated systems with a strong emphasis on service. Stanley Security Solutions is committed to extending its position as a leading comprehensive resource for a broad and extensive array of solutions that span the entire security spectrum.