

## VARIO UNIVERSAL BRACKETS



**VUB-POLE**



**VUB-WALL**



**VUB-PLATE-3x2**



**VUB-PLATE-3x4**



**VUB-PLATE-3x8**



**VUB-PLATE-1x16**



**VUB-PLATE-PSU**

Description	Universal Bracket for custom mounting and configuration of all VARIO illuminators		VUB Plates allow mounting of multiple illuminators and PSUs*				
	Pole Mount Bracket	Wall Mount Bracket	Allows mounting of 3x VARIO 2 series illuminators**	Allows mounting of 3x VARIO 4 series illuminators**	Allows mounting of 3x VARIO 8 series illuminators**	Allows mounting of 1x VARIO 16 series illuminator**	Allows mounting of any 1x VARIO PSU
*VUB Plates are to be used with VUB-POLE and VUB-WALL brackets      **Various configurations of VARIO panel sizes and positions possible – see VUB Bracket Summary							

## STANDARD BRACKETS



**SB1**



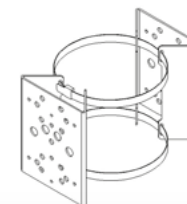
**DB2**



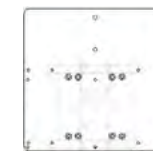
**WB1**



**PBC1**



**PBC2**



**PBC-PSU-ADAP**

Description	Single unit bracket for Top Pan/Tilt System	Double unit bracket for Top Pan/Tilt System	Wall Bracket - L Shape	Pole Bracket Clamp for 1 x illuminator	Pole Bracket Clamp for 2 x illuminators	Adaptor to convert 1 mount on PBC1 or PBC2 to fit a PSU
-------------	---	---	------------------------	--	---	---

## URBAN BRACKETS



**UB-WB**



**UB-TS-S**



**UB-TS-T**



**UB-HB-S**



**UB-HB-T**

Description	Cable Managed wall bracket for Urban illuminators	Cable managed stub bracket for 1 x illuminator, 90 degree	Cable managed stub bracket for 2 x illuminators, 90 degree	Cable managed hockey bracket for 1 x illuminator	Cable managed hockey bracket for 2 x illuminators
Variations		Flat 5 degree uplift	Flat 5 degree uplift		