

829R

S Series: Schlage C Keyway Showcase/Ratchet Lock



Complies with clause 6.3
(8.2~8.4) of ANSI/BHMA
A156.11 ANSI standards

SPECIFICATIONS

Rekeyable: Easily rekeyable via set screw cylinder release mechanism

ANSI/BHMA: Complies with clause 6.3 (8.2~8.4) of ANSI/BHMA A156.11 ANSI standards

Use: Sliding glass or wood doors

Body: Zinc die cast

Strap: Steel

Finish: 26D

Packaged: Packed 10 per box

829R KEYING INFORMATION

Keying: Can be keyed together with other Schlage C Keyway locks

Keyway: Schlage C keyway

Keys: Includes 2 keys per lock

Cylinder: Solid brass pin, tumbler

Stock keying: KD/KA - 5 pin standard

Stock KA#: 101, 102, O-Bit

Masterkeying: 5 pin standard, 6-pin available

Grand masterkeying: Available

Keyblank 5-pin: KBSC-5

Keyblank 6-pin: KBSC-6

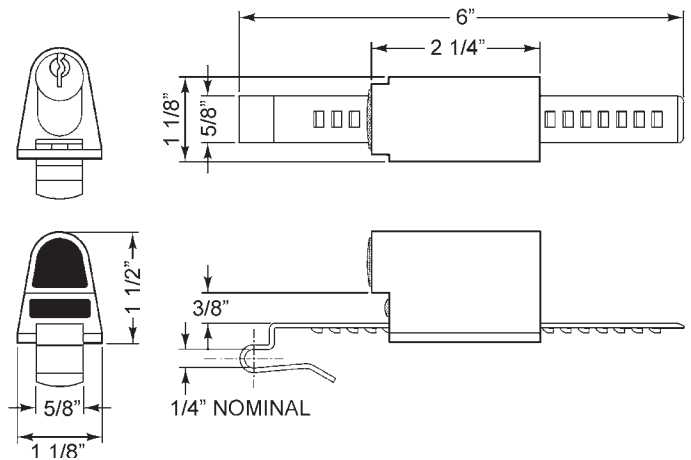
INCLUDES

729RS-1 strap for 3/16" to 1/4" material thickness

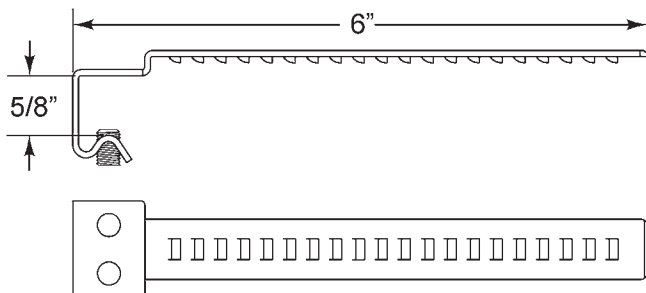
OPTIONAL ACCESSORIES

Alternate straps: 729RS-2 strap for 3/8" material thickness, or 729RS-3 strap for up to 5/8" material thickness

Cylinder: 78-201 Series



729RS-3 adjustable strap for 3/8" to 5/8" material. Available separately.



729RS-2 strap for 3/8" material. Available separately.

