

► B7 Cam Lock



BEST Keyway
(non-SFIC)



Locks in all eight positions
with 2 reversible cams.

AVAILABLE KEYWAYS

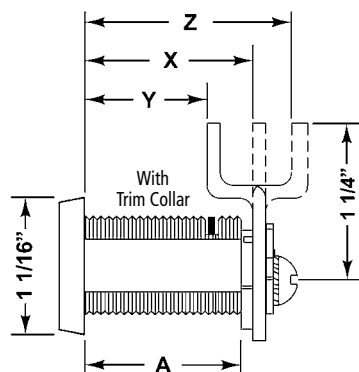
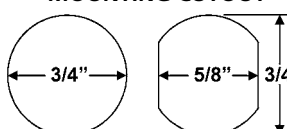
A	B	E	F	G
J	K	L	R	

Woodwork Institute
(WI) acknowledged
product

Item	Keyway	Finish	Cyl. Length*	Keying
B7	See chart	26D	1-3/16"	O-Bit or Custom Keyed

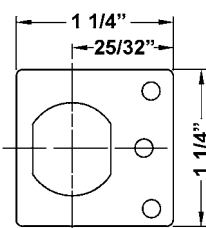
*Cyl. Length: As measured with straight cam.

MOUNTING CUTOUT

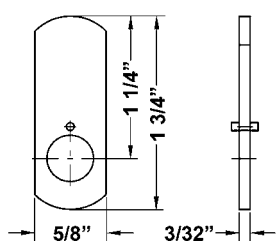


With Trim Collar	
For Mat. Thickness	7/8"
Straight Cam (X)	1-3/16"
Inbent Cam (Y)	7/8"
Outbent Cam (Z)	1-1/2"
Cylinder Length (A)	1-1/8"

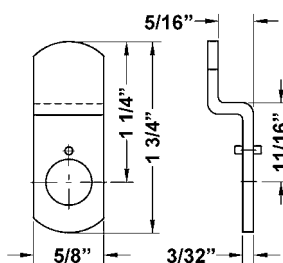
INCLUDED PARTS



DCNP-500-ARP
anti-rotation plate



DCNP-100-SC
straight cam



DCNP-100-BC
offset reversible cam

SPECIFICATIONS

Rekeyable: Patented cylinder retainer clip

US Patent Nos: 5,038,589; 5,737,950

Retrofits: Best 5E

Usage: Commonly used as locking device on medical carts (see also our 724VR medical cart/file cabinet lock for use on medical carts)

Body: Zinc die cast

Cylinder: Zinc die cast pin tumbler, drilled for 7 pins

Standard function: Key removable in locked or unlocked position.

Key retaining function: Alternate key-retaining shifters (page 61) are available separately for key removable in locked position only.

Cams: 2 reversible cams work in all positions

Finish: 26D

Packaged: Packed 10 per box

KEYING INFORMATION

Keyways: A,B,E,F,G,J,K,L,R

Keys: Includes 2 keys per lock

Stock keying: O-Bit

Keying: Custom and/or masterkeying available. Specify at time of order.

Rekeying: Use special pin spring p/n S-SPRING.

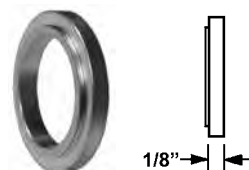
INCLUDED ACCESSORIES

Trim collar and parts in chart below.

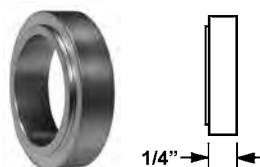
OPTIONAL ACCESSORIES

See pages 60-61 for a complete list of optional cam sizes and other accessories for use with B7 Series cam locks.

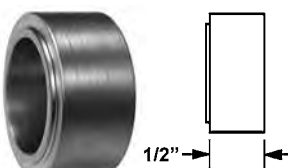
TRB7 SPACER COLLARS AVAILABLE SEPARATELY



TRB7-18-26D
Spacer collar, 1/8"



TRB7-14-26D
Spacer collar, 1/4"



TRB7-12-26D
Spacer collar, 1/2"