

NVR3216POE 32-Channel 1080p NVR with 16Ch Built-in PoE



FEATURES:

- ◆ Real-Time 30FPS/Ch Recording @ 1080p
- ◆ Up to 12MP/4K Recording
- ◆ H.265 / H.264+ / H.264 Recording Compressions
- ◆ Full Mobile Apps for iPhone, iPad & Android
- ◆ Built-in Motion Detection / Privacy Mask
- ◆ Free CMS Software
- ◆ Free Streaming Server Software
- ◆ Supports P2P Operation
- ◆ Up to 24TB Storage Capacity
- ◆ Integrated 200W 16Ch PoE Switch
- ◆ Included Mouse & IR Remote
- ◆ 3X USB for Copying Video & Mouse Control
- ◆ Simultaneous HDMI & VGA Video Outputs
- ◆ Up to 16 Channel Synchronous Playback
- ◆ Accepts ONVIF / PSIA Protocols
- ◆ Rack Mount Hardware Included
- ◆ PAL/NTSC Auto Detection
- ◆ Built-in Audio & Alarm
- ◆ Supports 2-Way Audio



GUARDING VISION

GUARDING VISION

Free Mobile App for iPhone, iPad, Android & Android Tablets

Plug and Play with Northern IP Cameras!

*Cameras Sold Separately

IPPTZ30XIR

2MP, 30X Zoom, 395' IR PTZ Camera

IP4D

4MP, 2.8mm, 100' IR Mini-Dome Camera

IP4W

4MP, 2.8mm, 30' IR Wedge Camera

IP4B

4MP, 4.0mm, 100' IR Bullet Camera

IP4T

4MP, 2.8mm, 100' IR Turret Camera

IP4MVFD

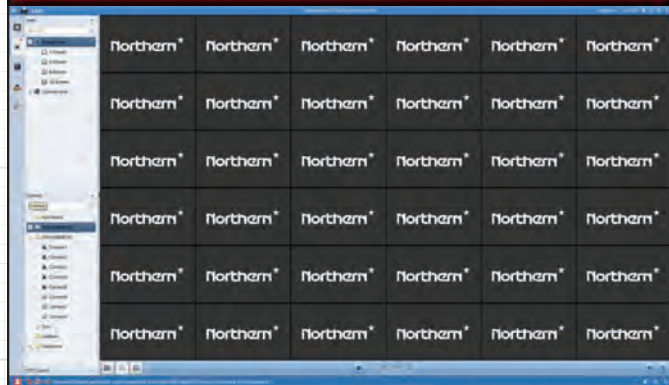
4MP, Motorized 2.8-12mm, 100' IR Dome Camera

IP4MVFB

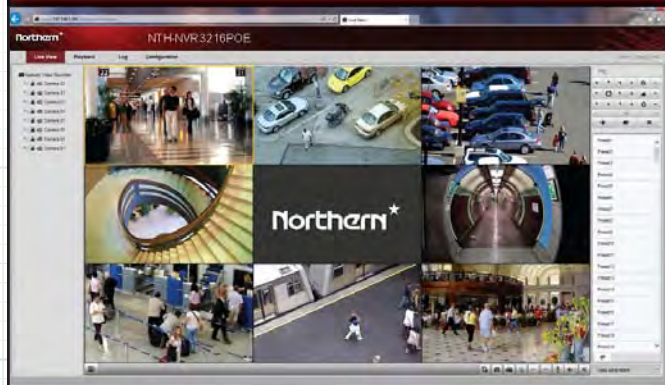
4MP, Motorized 2.8-12mm, 100' IR Bullet Camera



CMS Software For PC/Mac



Browser Based Remote Software



Learn More

Mobile Apps for iPhone, iPad & Android

View & Playback Video from multiple mobile devices.

Up to 12MP/4K Recording

Record up to 22FPS at 4K or up to 30FPS at 1080p resolution.

Up to 24TB Storage Capacity

Large Hard Disk storage capacity allows for longer storage of recorded video.

Built in PoE Switch

200W PoE Switch for connecting & powering cameras directly from the NVR using only a single CAT5 or CAT6 cable.

Free CMS Software for PC & MAC

Connect to multiple NVRs or individual IP cameras from a single computer with the included CMS software.

Free Streaming Server Software

Perfect for lowering the bandwidth load on the NVR in applications where multiple users need constant remote access.

Mouse & IR Remote Control

Easily control the NVR from either the included Mouse or IR Remote Controller.

HDMI & VGA Video Outputs

Simultaneously display video through both VGA & HDMI monitor outputs.

Built in Motion Detection

Maximize your recording duration by only recording when Motion is detected by the NVR.

Supports DDNS

DDNS insures you will always stay connected to your NVR when using a Dynamic IP address.

Multiple Language Support

NVR supports English, French and Spanish languages.

P2P Operation

Peer to Peer functionality makes set up easier by bypassing the need to configure port forwarding in most routers.

Jog Shuttle

Make reviewing video easier using the jogshuttle for easy fast forwarding and 30 second interval jumping.

Remote Accessibility

Remotely connect, monitor, playback, record and change NVR settings via IE, Firefox, Chrome and Safari Browsers.

Plug & Play

Effortless camera set up requires no configuration. Simply plug them in and generate video when used with Northern IP Cameras

3rd Party Compatibility

Built in protocols for Onvif, Acti, Arecont, Axis, Bosch, Brickcom, Canon, Hikvision, Hunt, Panasonic, Samsung, Sony, Vivotek, Zavio...

Hard Drive Configurations / Part Numbers / Package Contents

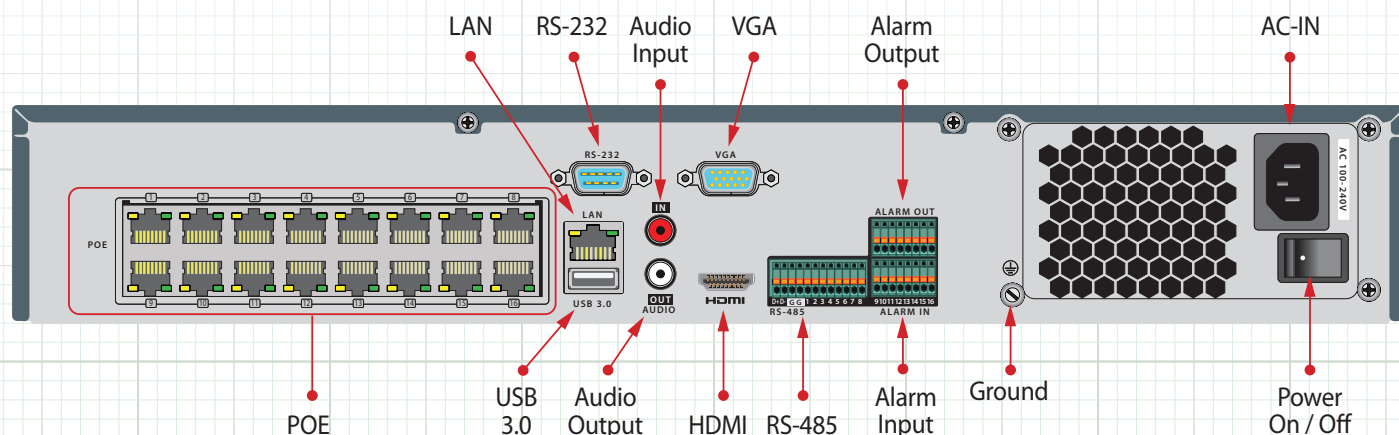
DRIVE SIZE	MODEL NUMBER
4TB	NVR3216POE4T
6TB	NVR3216POE6T
8TB	NVR3216POE8T
12TB	NVR3216POE12T
18TB	NVR3216POE18T
24TB	NVR3216POE24T

PACKAGE CONTENTS

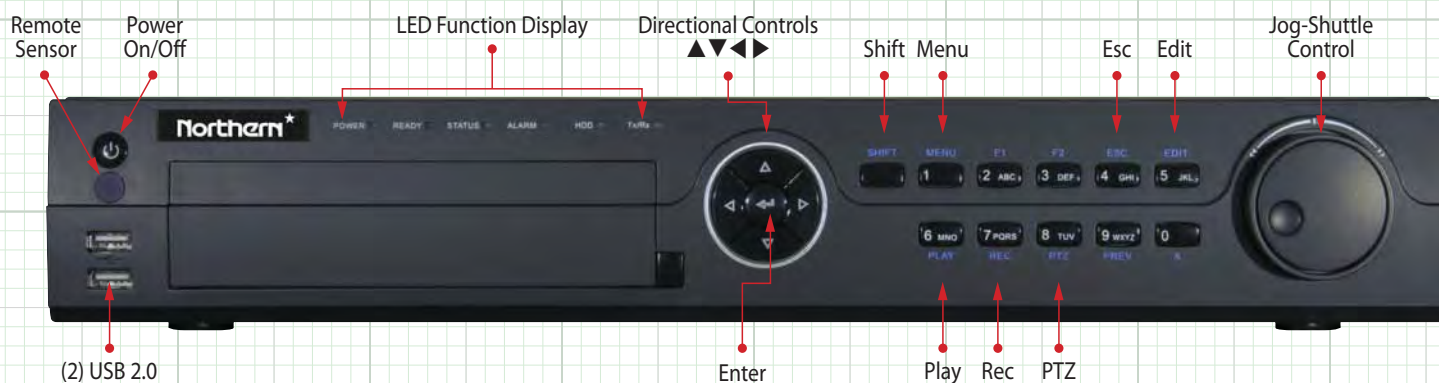
1. Power Cord
1. IR Remote Control
1. Software CD
1. Quick Start Manual
2. Rack Mount Ears
1. Mouse



Rear Panel Definitions / Connections



Front Panel Controls & Connections



NVRPOE Series Specifications

	FEATURES	NVR3216POE
Video/Audio Channels	IP Video Input	32-Channels
	Two-Way Audio Input	1-ch, RCA (2.0 Vp-p, 1kΩ)
	NTSC / PAL	Auto Detection for NTSC/PAL Formats
	Plug & Play Models	IP3D / IP3B / IP3W / IP3T / IP3VFB / IP3VFD / IP4D / IP4D4MM / IP4B / IP4W / IP4T / IP4MVFD / IP4MVFB / IPPTZ30XIR
	Third Party Compatible Mfg.	ACTI, Arecont, AXIS, Bosch, Brickcom, Canon, HIKvision, PANASONIC, Pelco, SAMSUNG, SANYO, SONY, Vivotek, ZAVIO, ONVIF, PSIA
Network	Incoming Bandwidth	256 Mbps
	Outgoing Bandwidth	256 Mbps
	Remote Connection	128
Video/Audio Output	Recording Resolution	12MP/8MP/6MP/5MP/4MP/3MP/1080p/UXGA/720p/VGA/4CIF/DCIF/ 2CIF/CIF/QCIF
	Frame Rate	Main stream: 50 fps (P) / 60 fps (N) Sub-stream: 50 fps (P) / 60 fps (N)
	Simultaneous Outputs	Yes - VGA & HDMI / Independently Configurable for Call/Spot Monitoring
	HDMI Output Resolution	4K (3840 × 2160)/60Hz, 4K (3840 × 2160)/30Hz, 1920 × 1080p/60Hz, 1600 × 1200/60Hz, 1280 × 1024/60Hz, 1280 × 720/60Hz, 1024 × 768/60Hz
	VGA Output Resolution	1920 × 1080p/60Hz, 1280 × 1024/60Hz, 1280 × 720/60Hz, 1024 × 768/60Hz
	Audio Output	1-ch, RCA (Linear, 1 KΩ)
De-coding	Live View / Playback Resolution	12 MP/8 MP/6 MP/5 MP/4 MP/3 MP/1080p/UXGA/720p/VGA/4CIF/DCIF/ 2CIF/CIF/QCIF
	Playback Capability	4-ch @ 4K, or 16-ch @ 1080p
	Decoding Format	H.265/H.264+/H.264/MPEG4
Recording & Playback	Record Mode Types	Manual, Continuous, Alarm, Motion, Motion & Alarm
	Record Time Periods	8 Recording Time Periods with Separate Record Types
	Pre & Post Recording	Pre & Post Recording for Alarm & Motion Detection / Pre Recording for Schedule & Manual Recording
	Redundant Recording	Yes - Available only in 2 HDD configurations
	Recording Parameters	Independent for Each Channel (Resolution, Frame Rate, Bit Rate, Image Quality, etc.)
	Zooming	Available in Live View & Playback
	Synchronous Playback	16-ch
	Playback Controls	Jog Shuttle, Pause, Reverse Play, Speed Up, Speed Down, Skip Forward, Skip Backward, Mouse Drag
	Searching	Search Recorded Files by Events (Alarm Input / Motion Detection)
Hard Disk	SATA	4 SATA interfaces for 4HDDs
	Capacity	Up to 6TB capacity for each HDD
	Max Storage	24TB
	HDD Detection	Built-in S.M.A.R.T and Bad Sector Detection
External Interface	Network Interface	1 RJ-45 10/100/1000 Mbps self-adaptive Ethernet interface
	USB Interface	Front panel: 2 × USB 2.0; Rear panel: 1 × USB 3.0
	Alarm In/Out	16-In/4-Out
IVMS Software	CMS Client - Included	Yes
	Video Server - Included	Yes
	Streaming Server - Included	Yes
PoE	Network Interface	16 RJ-45 10/100 Mbps self-adaptive Ethernet interfaces
	Max. Power	≤200W
	Supported Standard	IEEE 802.3 af/at
General	Power Supply	100 to 240 VAC
	Consumption	≤20 W (without enabling PoE)
	Operating Temperature	-10 to +55°C (14 to 131°F)
	Operating Humidity	10 to 90 %
	Chassis	19-inch rack-mounted 1.5U chassis
	Dimensions (W × D × H)	445 × 390 × 70 mm (17.5" × 15.3" × 2.8")
	Weight	≤ 5 Kg (8.8 lb)

Note: Specification subject to change without notice