

## McKinney Warranty

McKinney products are guaranteed to be free of defects in both workmanship and materials for a period of one year. Any bending, defacing or modification of our product after leaving the factory will void the warranty. Liability shall be limited to the replacement of product or component determined to be defective and shall not include costs arising from removal or reinstallation of product. Cost of replacement shall not exceed original purchase price.

Written notice of damages must occur within the warranty period. A factory generated Return Goods Authorization will be provided as no goods will be accepted without prior approval. These defective goods must be returned to our factory in Berlin, CT, unless specified otherwise. Freight charges must be pre-paid unless noted otherwise.

This guarantee is only valid if the products are specified, applied and adjusted in accordance with the instructions contained in the General Information Section of the McKinney catalog and on frames and doors that are plumb and square.

## Hinge Types

McKinney offers the broadest range of full mortise hinges in a variety of metals, finishes, sizes, and weights to meet all your load bearing and security applications. They include two, three, and five knuckle styles, swing clear hinges, wide throw hinges, anchor hinges, electric hinges, institutional hinges, and pivots.

McKinney hinges conform to Government standards CS9-65 and SDI as well as the following standards approved by the Builders hardware Manufacturers / American National Standards Institute:

### **ANSI/BHMA Standard 156.1 -**

The American National Standard for Butts and Hinges

### **ANSI/BHMA Standard 156.7 -**

The American National Standard for Template Hinge Dimensions

### **ANSI/BHMA Standard 156.17 -**

The American National Standard for Self-Closing Hinges & Pivots

### **ANSI/BHMA Standard 156.18 -**

The American National Standard for Material and Finishes

## Full Mortise Hinges

McKinney offers the broadest range of full mortise hinges in a variety of metals, finishes, sizes, and weights to meet all your load bearing and security applications. They include two, three, and five knuckle styles, swing clear hinges, wide throw hinges, anchor hinges, electric hinges, institutional hinges, and pivots.

## Full Surface Hinges

Choose from regular and swing clear models for heavy weight bearing or standard weight bearing applications in a choice of metals, gauges, and sizes. Two knuckle, three knuckle, and five knuckle styles are available.

## Half Mortise Hinges

Available in a choice of metals, gauges, and sizes for a wide range of door thicknesses. You may specify plain bearing, standard weight bearing, or heavy weight bearing models. Regular and swing clear applications. Three knuckle, as well as five knuckle styles are available.

## Half Surface Hinges

Heavy weight bearing, standard weight bearing, and plain bearing hinges in a range of metals, gauges, and sizes. Regular and swing clear applications. Three knuckle, and five knuckle styles.

## Security Hinges

McKinney produces an assortment of electrical security hinges for a wide variety of control functions. Included are full mortise bearing hinges with either concealed circuitry or concealed switch. In addition, a unique, field-replaceable magnet monitoring hinge, featuring a magnetic reed concealed switch, is available. McKinney also produces full mortise institutional hinges for maximum security installations, and our full mortise single acting spring hinge is available with a Tamper Resistant Screw (TRS Option) which is screwed into the tension ratchet after proper tension has been set.

## Spring & Specialty Hinges

A full range of spring hinges are available for all types of door sizes, weights, and applications. Included are full mortise single acting hinges, single acting reverse spring hinges, full mortise double acting hinges, and half surface double acting hinges, plus our heavy duty spring butt hinge that permits doors to open 90° in either direction. In addition, McKinney produces a variety of hinges for special applications including anchor hinges, wide throw hinges, swing clear hinges, and pocket hinges.

## Electric Hinges

To meet today's need for greater security applications, McKinney developed a variety of electric hinges used in remote door monitoring and access control systems. These ElectroLynx® Hinges use convenient Molex connectors to make installation quick and simple.

Traditional wired connection electric hinges are available with 28 gauge and 18 gauge wires.

## Continuous Hinges

McKinney self-aligning continuous hinges extend the full height of the door. These hinges bond the door and frame into an integrated unit and present a streamlined, no-gap surface, affording privacy, safety, and outstanding performance. The high load capacity of these hinges makes them ideal for use in high-frequency areas where hinges are subject to abuse. The hinge design affords resistance to vandalism. McKinney aluminum continuous geared hinges are warranted for the life of the building. UL listed in both the USA and Canada up to 3 hour (A label) application. Pin and Barrel continuous hinges are available in stainless and steel.

## Miscellaneous

McKinney provides a standard duty center hung jamb mount pivot set.

Additionally, we provide emergency door stops, strikes, and stainless steel edge guards.

The most up to date templates are available on the website at [www.mckinneyhinge.com](http://www.mckinneyhinge.com)

## Hinge Bearings

McKinney offers a number of bearing choices. Door weight, height, width, thickness and frequency of operation are all factors in determining the proper hinge.

### Oil Impregnated Bearing (TA)

One piece, non-ferrous, and self-lubricating bearings ensure even longer-lasting wear and resistance to clogging, corrosion, and hinge failure. This feature is standard and supplied on all five knuckle bearing hinges.



### Ball Bearing (TB)

Ball bearings are available on all five knuckle bearing hinges.



### Concealed Bearing (TCA)

Concealed, anti-friction type bearings are available on all five knuckle bearing hinges, which provide long-lasting wear and consistency of hinge barrel design.

**Note:** All three and two knuckle bearing hinges are provided with concealed, anti-friction type bearings (designated TA).



### Plain Bearing

This is the designation for non-bearing hinges. Knuckles are machined with bearing-like surfaces to move against one another. These are not recommended for high frequency doors or doors with closing devices. These hinges are not approved for use in labeled openings.



## Number of Bearings

Standard gauge McKinney three knuckle and five knuckle bearing hinges (.123 - .160) are supplied with two bearings. These hinges are intended for use on doors subjected to average traffic in residential and light commercial construction. Four bearings can be specified (T4A2714/T4A2314) on some five knuckle hinges.

Heavy gauge McKinney hinges (.180 - .203) are regularly furnished with four bearings. 8" five knuckle hinges supplied with six bearings. These hinges are intended for use on heavy doors and high frequency doors for all types of construction.

**Note:** One bearing carries the vertical load on two bearing hinges. On four bearing hinges, two bearings carry the load.

Door weight, height, width, thickness and frequency of operation are all factors in determining the proper hinge. Four bearing hinges should be specified whenever there is any question.

McKinney steel or stainless steel based Bearing Hinges are approved for use on Labeled Applications based upon Table 1 Reference NFPA-80 Table 6.4.3.1 Builders Hardware. See catalog page 24 for additional information.

## MACPRO® by McKinney Five Knuckle Heavy Weight Series

The MacPro line by McKinney offers contractor grade hinges to get the job done right. High quality and lower prices equal an extraordinary value, ideal when you need large quantities of standard hinges.

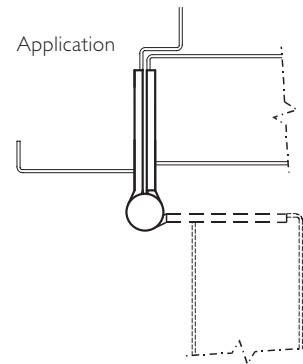
- For doors with a closing device, bearing hinge must be used
- For heavy weight doors with a closing device, select a MPB68, heavy weight bearing hinge
- MacPro by McKinney templated hinges are made to conform to ANSI/BHMA 156.1, 156.7
- For available finishes consult the factory

No.	Base Material	Weight	Bearing
MPB99	Stainless	HVY	Bearing
MPB68	Steel	HVY	Bearing

### Specifications

Inches	mm	Gauge	No. of Holes	Fasteners	
				Machine	Wood
4½" x 4½"	114.3 x 114.3	.180	8	½ x 12-24	1¼ x 12

MPB99  
MPB68



### Options:

Code	Description
NRP	Non-Removable Pin

### MacPro Hinges 5K Hinges continued

SKU	Catalog Number	Size	Options	Finishes
76340	MPB91	4½ × 4½		32D
76341	MPB91	4½ × 4½	NRP	32D
76344	MP79	4½ × 4½		3
76346	MPB79	4½ × 4		4
76347	MPB79	4½ × 4	NRP	4
76348	MP79	4½ × 4½		4
76349	MP79	4½ × 4½	NRP	4
76356	MP79	4½ × 4½		10B
76357	MP79	4½ × 4½		10B
76360	MP79	4½ × 4½	NRP	26
76362	MPB79	4½ × 4		26D
76363	MPB79	4½ × 4	NRP	26D
76364	MP79	4½ × 4½		26D
76365	MP79	4½ × 4½	NRP	26D
76366	MPB79	4½ × 4		P
76367	MPB79	4½ × 4	NRP	P
76368	MP79	4½ × 4½		P
76369	MP79	4½ × 4½	NRP	P
76374	MPB68	4½ × 4½		26D
76375	MPB68	4½ × 4½	NRP	26D
76376	MPB99	4½ × 4½		32D
76377	MPB99	4½ × 4½	NRP	32D
76378	MPS60	4½ × 4½		26D
76379	MPB679	4½ × 4½		26D
76380	MPS60	4½ × 4½		P
81306	HTB386	4½ × 4		32D

### Electric Hinges

SKU	Catalog Number	Size	Options	Finishes
55669	TA2714	4½ × 4	CC4	26D
55885	TA2714	4½ × 4½	CC4	26D
55904	TA2714	4½ × 4½	CC8	26D
71120	TA2714	4½ × 4½	CC6	26D
71469	TA2714	4½ × 4½	CC8	26D
73192	TA2714	4½ × 4½	QC4	26D
73254	TA2714	4½ × 4½	QC6	26D
73312	TA2714	4½ × 4½	QC8	26D
73370	TA2714	4½ × 4½	QC12	26D

### Electric Hinges continued

SKU	Catalog Number	Size	Options	Finishes
69203	TA714	4½ × 4	CC4	26D
69266	TA714	4½ × 4½	CC4	26D
71118	T4A3786	4½ × 4½	CC4	26D
71136	T4A3786	5 × 4½	CC4	26D
71166	T4A3786	4½ × 4½	CC8	26D
71508	T4A3786	5 × 4½	CC8	26D
73216	T4A3786	4½ × 4½	QC4	26D
73274	T4A3786	4½ × 4½	QC6	26D
73332	T4A3786	4½ × 4½	QC8	26D
73336	T4A3786	5 × 4½	QC8	26D

### ElectroLynx® Accessories

SKU	Catalog Number	Description	Size
93978	QC-RM4	MALE PLUG	(4CKT)
93979	QC-RM8	MALE PLUG	(8CKT)
93980	QC-MT2024	MALE TERMINAL	(AWG 20-24)
93981	QC-C003	12 WIRE 22AWG	3 INCH
93982	QC-C006	12 WIRE 22AWG	6 INCH
93983	QC-C012	12 WIRE 22AWG	12 INCH
93984	QC-C200	12 WIRE 22AWG	26 INCH
93985	QC-C206	12 WIRE 22AWG	32 INCH
93986	QC-C300	12 WIRE 22AWG	38 INCH
93987	QC-C306	12 WIRE 22AWG	44 INCH
93988	QC-C400	12 WIRE 22AWG	50 INCH
93989	QC-C1500	12 WIRE 22AWG	15 FT, 2 IN.
93990	QC-C003P	12 WIRE 22AWG	3 INCH
93991	QC-C006P	12 WIRE 22AWG	6 INCH
93992	QC-C012P	12 WIRE 22AWG	12 INCH
93993	QC-C200P	12 WIRE 22AWG	26 INCH
93994	QC-C206P	12 WIRE 22AWG	32 INCH
93995	QC-C300P	12 WIRE 22AWG	38 INCH
93996	QC-C306P	12 WIRE 22AWG	44 INCH
93997	QC-C400P	12 WIRE 22AWG	50 INCH
93998	QC-C1500P	12 WIRE 22AWG	15 FT, 2 IN.
73002		FINISH SAMPLE CASE	