

**STANDARD POWDER COAT FINISHES**

LCN powder coating provides superior protection against the effects of weather conditions and is an environmentally friendly process. The high quality, chip resistant finish is far superior to any previously offered. Corrosion resistance surpasses 100 hours salt spray testing (four times the industry standard). Non-metallic components also provide the same high resistance to the effects of the elements. All LCN products must be shipped with a finish.

**LCN STANDARD FINISHES  
(CLOSEST BHMA EQUIVALENT):****ALUM ALUMINUM** (BHMA 689)**DKBRZ DARK BRONZE** (BHMA 695)**STAT STATUARY BRONZE** (BHMA 690)**LTBRZ LIGHT BRONZE** (BHMA 691)**BLK BLACK** (BHMA 693)**BRASS BRASS** (BHMA 696)**OPTIONAL CUSTOM POWDER COAT FINISHES**

LCN offers custom powder coating to provide a custom appearance and all the corrosion resistance of standard powder coat finishes at a nominal additional cost. LCN uses the RAL numbering system for the 150+ custom colors available. Contact your local SSC representative for a brochure showing the available custom colors. Note: Custom powder coat finishes require a metal cover.

**OPTIONAL PLATED FINISHES**

Visible components such as metal covers, arms, fasteners, and finish plates are plated to match the selected finish. Surface mounted tracks are powder coated to compliment the plated finish. Hidden assemblies such as cylinders, tracks, and mounting plates are supplied with a powder coated finish. Plated finishes require handling of closers.

**LCN PLATED FINISHES:**

US 3	Bright Brass (BHMA 632)
US 4	Satin Brass (BHMA 633)
US 10	Satin Bronze (BHMA 639)
US 11	Satin Bronze (BHMA 643)
US 15	Satin Nickel (BHMA 646)
US 26	Bright Chrome (BHMA 651)
US 26D	Satin Chrome (BHMA 652)

**LCN PAINTED FINISHERS**

Aluminum	ALUM (BHMA 689)
Dark Bronze	DKBRZ (BHMA 695)

**SPECIAL RUST INHIBITING (SRI) PROCESS**

For installations where a higher level of protection against weather conditions, or the effects of a potentially corrosive atmosphere is required, LCN offers a special rust inhibiting (SRI) process. Ferrous metal components receive an SRI pretreatment and a standard powder coat finish of your choice, or a custom powder coat finish for a nominal additional cost. Closers treated with the SRI process exceed the 100 hour protection level available with standard LCN powder coated finishes. For details, contact your local SSC representative or the LCN factory.

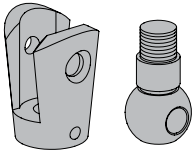
**STANDARD ANODIZED FINISHES**

LCN Senior Swing & Benchmark electromechanical power operators are offered with an anodized finish. Anodizing is an electrochemical process that thickens and toughens the protective oxide on aluminum metal.

**LCN ANODIZED FINISHES:**

Aluminum	ANCLR (BHMA 628)
Dark Bronze	ANDKBRZ (BHMA 710)

### Extensions



#### **SEM7810-514** Coupler Assembly Kit

- Required for each door needing extension(s)
- Kit includes coupler link and ball pivot (alone serves as a 1-1/2" extension)



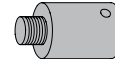
#### **SEM7810-E050** Extension - 1/2"

- Metal
- Standard



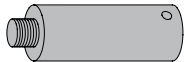
#### **SEM7810-E075** Extension - 3/4"

- Metal
- Standard



#### **Extension, SEM7810-E100** Extension - 1"

- Metal
- Standard



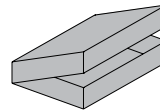
#### **SEM7810-E200** Extension - 2"

- Metal
- Standard



#### **Extension, SEM7810-E400** Extension - 4"

- Metal
- Standard



#### **SEM7810-517** Extension kit

Extension kit includes:

- 10 ..... 7810SEM-E050
- 10 ..... 7810SEM-E075
- 10 ..... 7810SEM-E100
- 5 ..... 7810SEM-E200
- 20 ..... 7810SEM-514

*Note: Using just the Coupler Assembly Kit (SEM7810-514) will create a 1-1/2" link.*

*Extension Links are available in different lengths and can be combined together to achieve the desired length. Max. recommended length = 12"*