

STANDARD POWDER COAT FINISHES

LCN powder coating provides superior protection against the effects of weather conditions and is an environmentally friendly process. The high quality, chip resistant finish is far superior to any previously offered. Corrosion resistance surpasses 100 hours salt spray testing (four times the industry standard). Non-metallic components also provide the same high resistance to the effects of the elements. All LCN products must be shipped with a finish.

**LCN STANDARD FINISHES
(CLOSEST BHMA EQUIVALENT):****ALUM ALUMINUM** (BHMA 689)**DKBRZ DARK BRONZE** (BHMA 695)**STAT STATUARY BRONZE** (BHMA 690)**LTBRZ LIGHT BRONZE** (BHMA 691)**BLK BLACK** (BHMA 693)**BRASS BRASS** (BHMA 696)**OPTIONAL CUSTOM POWDER COAT FINISHES**

LCN offers custom powder coating to provide a custom appearance and all the corrosion resistance of standard powder coat finishes at a nominal additional cost. LCN uses the RAL numbering system for the 150+ custom colors available. Contact your local SSC representative for a brochure showing the available custom colors. Note: Custom powder coat finishes require a metal cover.

OPTIONAL PLATED FINISHES

Visible components such as metal covers, arms, fasteners, and finish plates are plated to match the selected finish. Surface mounted tracks are powder coated to compliment the plated finish. Hidden assemblies such as cylinders, tracks, and mounting plates are supplied with a powder coated finish. Plated finishes require handling of closers.

LCN PLATED FINISHES:

US 3	Bright Brass (BHMA 632)
US 4	Satin Brass (BHMA 633)
US 10	Satin Bronze (BHMA 639)
US 11	Satin Bronze (BHMA 643)
US 15	Satin Nickel (BHMA 646)
US 26	Bright Chrome (BHMA 651)
US 26D	Satin Chrome (BHMA 652)

LCN PAINTED FINISHERS

Aluminum	ALUM (BHMA 689)
Dark Bronze	DKBRZ (BHMA 695)

SPECIAL RUST INHIBITING (SRI) PROCESS

For installations where a higher level of protection against weather conditions, or the effects of a potentially corrosive atmosphere is required, LCN offers a special rust inhibiting (SRI) process. Ferrous metal components receive an SRI pretreatment and a standard powder coat finish of your choice, or a custom powder coat finish for a nominal additional cost. Closers treated with the SRI process exceed the 100 hour protection level available with standard LCN powder coated finishes. For details, contact your local SSC representative or the LCN factory.

STANDARD ANODIZED FINISHES

LCN Senior Swing & Benchmark electromechanical power operators are offered with an anodized finish. Anodizing is an electrochemical process that thickens and toughens the protective oxide on aluminum metal.

LCN ANODIZED FINISHES:

Aluminum	ANCLR (BHMA 628)
Dark Bronze	ANDKBRZ (BHMA 710)



The Sentronic® SEM 7800 Series are heavy duty, electrically controlled door holding magnets. Magnets are fail safe and hold until the current is interrupted. A manual door closer is used to control and close the door. A choice of floor, recessed wall, or surface mounted wall magnets are available.

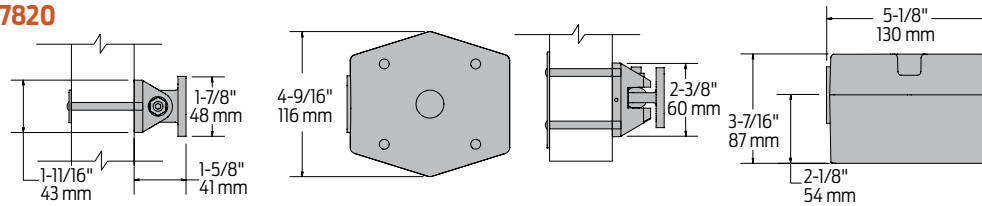
Certifications	Grade 1 - ANSI A156.15, UL 10C for metal smoke barrier or labeled door, Life Safety Code, NFPA 101, 100 Hour Salt Spray, Meets BAA - Buy American Act
Voltage	Tri-voltage design with 35 lbs. of holding force
Housing	Die cast
Fasteners	Wood and machine screw pack
Finishes/Colors/ Powder Coat	Available in Aluminum and Dark Bronze only
Options	Now available with armature extensions (see page 11)

SEM7800 Series

Magnets

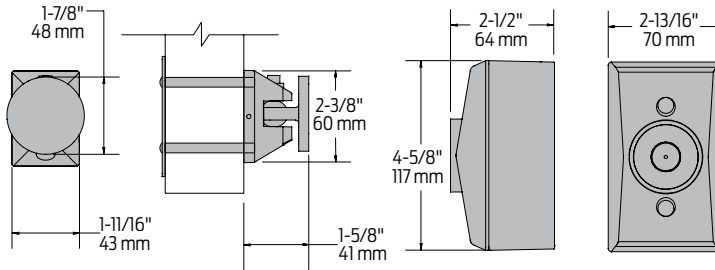
Features and mounting details

7820



Mounting	Floor mounted
Total Projection	6-3/4" (171 mm)

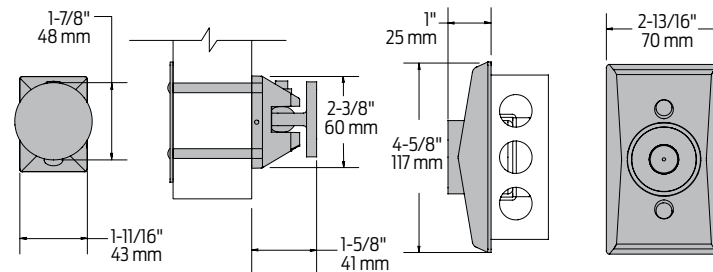
7830



Mounting	Surface wall mounted
Total Projection	4-1/8" (105 mm)

- Suitable for use in pocket door installations

7840



Mounting	<ul style="list-style-type: none"> ■ Low profile recessed wall mount ■ 2" (51 mm) x 4" (102 mm) x 1-1/2" (38 mm)
-----------------	--

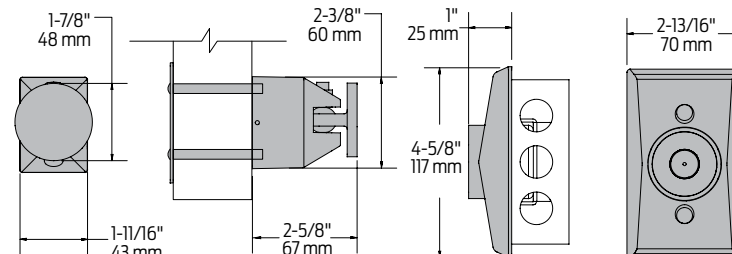
Total Projection	2-5/8" (67 mm)
-------------------------	----------------

- Suitable for use in pocket door installations

Note:

Outlet box not included.

7850



Mounting	<ul style="list-style-type: none"> ■ Standard profile recessed wall mount ■ 2" (51 mm) x 4" (102 mm) x 1-1/2" (38 mm)
-----------------	---

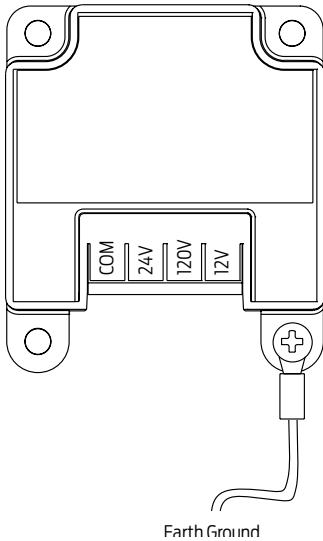
Total Projection	3-5/8" (92 mm)
-------------------------	----------------

- Suitable for use in pocket door installations

Note:

Outlet box not included.

Voltage input



Electrical schematic

Operation:

Electromagnets are typically used with fire alarm systems. Doors are held open in the non-alarm condition. When the fire alarm panel enters the alarm condition, power to the electromagnets is removed, the doors close under door closer control, and function as a manual door. When the fire alarm panel returns to the non-alarm condition, power is reapplied to the electromagnets and the doors can be held open again.

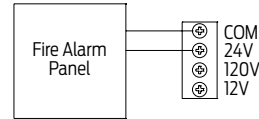


Fig. 1 24V AC/DC Wiring
Polarity is inimportant

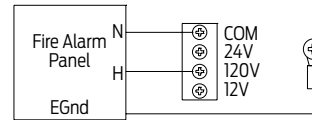


Fig. 2 120V AC Wiring

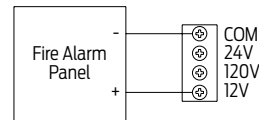


Fig. 3 12V DC Wiring
Polarity as shown

Electrical Specifications
Max. Current Draw
.030A @ 12VDC
.020A @ 24VAC/DC
.020A @ 120VAC

Holding Force	35 lbs. @ nominal input voltage
Maximum Current Draw	■ .020A @ 24VAC/DC, 120VAC ■ .030A @ 12VDC

SEM7800
Series

Ordering Information

How-to-order SEM 7800 series magnets

Select magnet series

- ☐ SEM7820
- ☐ SEM7830
- ☐ SEM7840
- ☐ SEM7850

Specify finish

- ☐ Standard Powder Coat _____
Aluminum, Dark Bronze

Magnets will be shipped with:

- Die cast housing
- Cover
- Armatures
- WMS screw pack

How-to-order SEM 7810 extensions

Select magnet series

- ☐ SEM7810-514 (qty.) _____
- ☐ SEM7810-E050 (qty.) _____
- ☐ SEM7810-E075 (qty.) _____
- ☐ SEM7810-E100 (qty.) _____
- ☐ SEM7810-E200 (qty.) _____
- ☐ SEM7810-E400 (qty.) _____
- ☐ SEM7810-517 (qty.) _____