

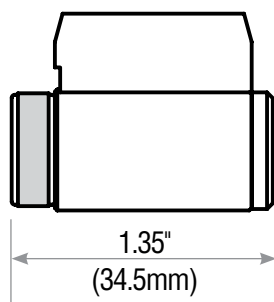
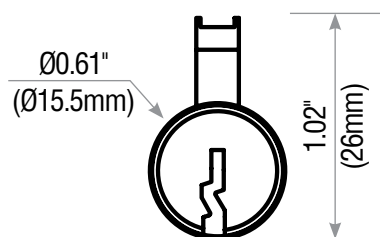
## KNOB/LEVER CYLINDERS

- ▶ Exact pinning specifications as original systems
- ▶ Solid brass construction
- ▶ 22 keyways
- ▶ Available in 2 finishes
- ▶ Supplied with multiple tailpieces
- ▶ Screw-on retaining cap design (except K002)

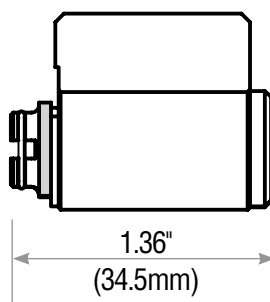
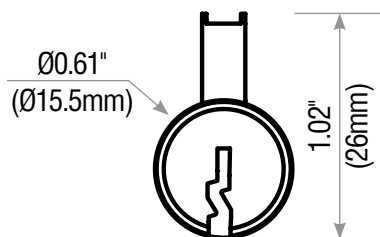


Model #	Type	Fits	Tailpieces
K001	Knob/Lever cylinder	Schlage knobs, levers, deadbolts and Yale levers*	5 tailpieces
K002	Knob/Lever cylinder	Fits Arrow knobs and levers	3 tailpieces
K003	Knob/Lever cylinder	Fits Sargent levers	3 tailpieces

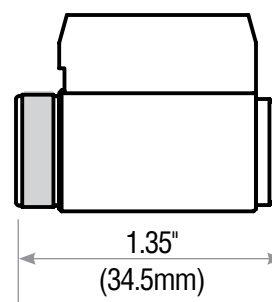
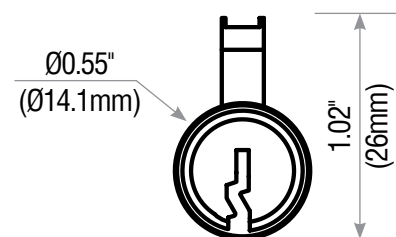
\* Converts to fit Yale levers with KIT-K001YA (page 17).



**K001**



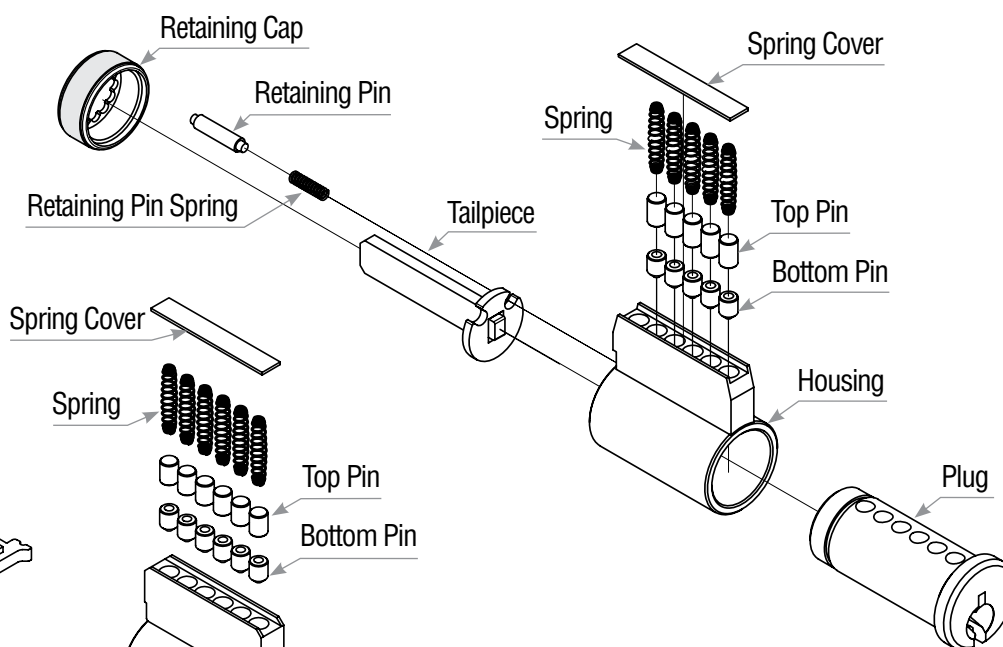
**K002**



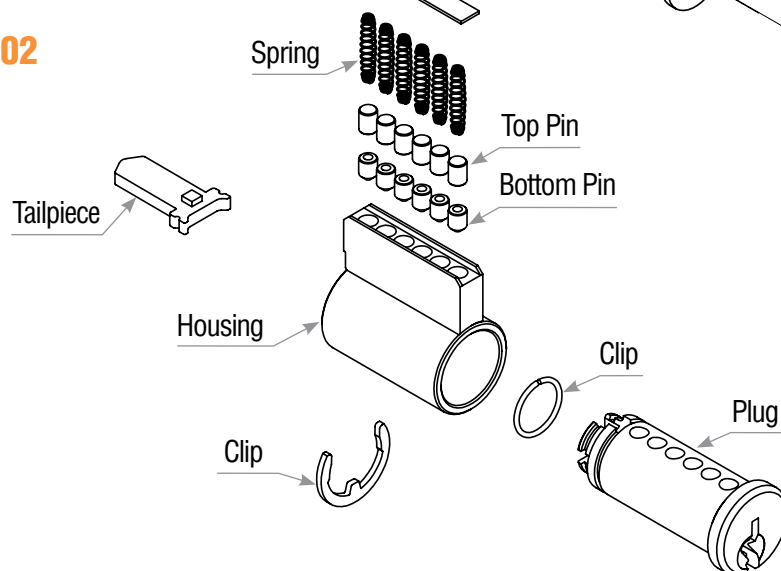
**K003**

# Knob/Lever Cylinder Schematic Drawing

## K001 & K003



## K002



## How to Order Knob/Lever Cylinders

### Keyway

Arrow 1179	AW
Assa 62	A62*
Assa Twin 6000	AST*
Assa V10	ASV*
Corbin 60	CB
Corbin L4	CL4
Kwikset 1176	KW
Russwin D1	RD1
Sargent LA	SA
Sargent LA~LD	SAX
Sargent LB	SLB
Sargent RA	RA
Schlage C	SC
Schlage C123	G23*
Schlage C145	G45*
Schlage C~K	SX
Schlage E	SCE
Schlage F	SCF
Segal 9	SE
Weiser E	WR
Yale 8	YA
Yale GA	YGA

### Model #

K001  
K002  
K003

### Finish

Satin Brass 4  
Satin Chrome 26D

### Keying

Keyed alike	A2
in pairs	A2-6**
Zero	OB
bitted	OB-6**
Keyed	KD
different	KD-6**
Special	KS
keying	KS-6**

K001

WR

26D

A2

\*No key for A62, AST, ASV, G23 and G45 keyways. \*\*Cylinders are 6 pin.