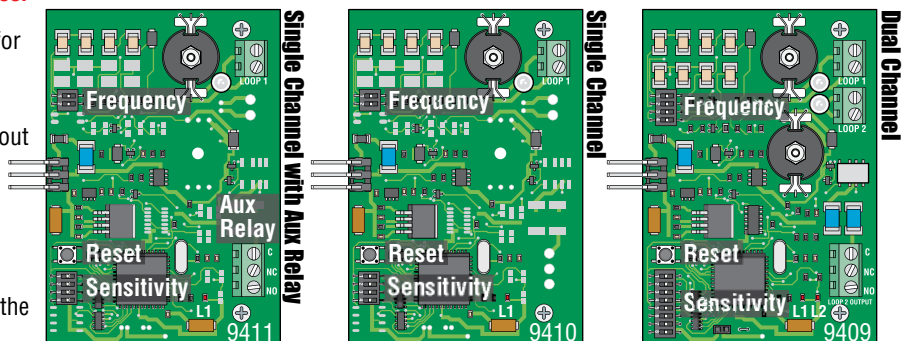


SECTION 5 - DOORKING LOOP DETECTORS AND ACCESSORIES

All loop detectors have the following features:

- Self-tuning circuitry. Automatically adjust for different loops and changes in weather.
- Sensitivity boost automatically increases sensitivity during detection. Prevents dropout from high bed vehicles.
- Four frequencies available.
- Four sensitivity levels available.
- Surface mounted LED's to indicate when power is applied to the detector and when the loop is triggered.



Part Number	Description
9410-010	Single channel plug-in detector board. Four different sensitivity and frequency settings. Sensitivity Boost feature, frequency counter, and Fast Trak feature. Manufactured by DoorKing Inc.
9409-010	Two channel plug-in detector board. Four different sensitivity and frequency settings for each loop. Sensitivity Boost feature, frequency counter, and Fast Trak feature for each loop. Loop 1 output is feed directly into control board; loop two output is via a dry contact relay. Manufactured by DoorKing Inc.
9411-010	Single channel with relay plug-in detector board. Four different sensitivity and frequency settings. Sensitivity Boost feature, frequency counter, and Fast Trak feature. Connect a device to aux relay terminal (dry relay contacts, normally open-NO or normally closed-NC) that will activate whenever the loop detector senses a vehicle in the Loop's detection field. Used with the 1600 barrier gate operators. Manufactured by DoorKing Inc.
9401-045	Megohm meter. Checks integrity of ground loops. Reads up to 500 megohms.
2600-771	Asphalt sealant, flat black, 10 oz. tube
2600-772	Concrete sealant, gray, 10 oz. tube.
9401-060	Pre-fabricated ground loop (BLUE), 24 foot circumference with 50-foot lead-in cable. Loop consist of three turns of THHN insulated 18 AWG stranded wire enclosed in PLIOVIC tubing allowing it to be formed to the size and shape required. A "T" connector allows the lead-in wire to be routed through a 1/2 inch PVC conduit.
9401-061	Pre-fabricated ground loop (BLACK), 24 foot circumference with 50-foot lead-in cable. Loop consist of three turns of THHN insulated 18 AWG stranded wire enclosed in PLIOVIC tubing allowing it to be formed to the size and shape required. A "T" connector allows the lead-in wire to be routed through a 1/2 inch PVC conduit.
9401-062	Pre-fabricated ground loop (RED), 24 foot circumference with 50-foot lead-in cable. Loop consist of three turns of THHN insulated 18 AWG stranded wire enclosed in PLIOVIC tubing allowing it to be formed to the size and shape required. A "T" connector allows the lead-in wire to be routed through a 1/2 inch PVC conduit.

18 AWG XLPE Loop Wire – Order by Part Number			
Color	Black	Blue	Red
500 Feet	P/N 9402-076	P/N 9402-078	P/N 9402-080
1000 Feet	P/N 9402-077	P/N 9402-079	P/N 9402-081