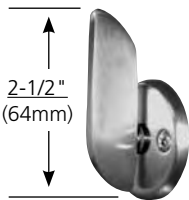


Options & Accessories

ML2000 Series

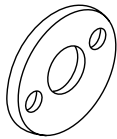


Ergonomic Thumbturn

Cast brass or bronze. Large profile and offset center makes it easier to grasp and rotate. Available on both sectional and escutcheon trim. To order with lock and trim, specify Quick Code M34. To order separately, see table.

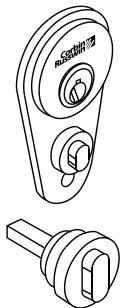
Note: Not available with the M19N, M19SN, or M19VN indicators. Not available with HPSK trim.

Door	Packet
Escutcheon Trim up to 4" (102mm)	711F002
Sectional Trim	
1-3/8" (35mm) - 1-5/8" (41mm)	707F57 x FIN
1-3/4" (44mm) - 2" (51mm)	707F58 x FIN
2" (51mm) - 2-1/4" (57mm)	707F59 x FIN
2-3/8" (60mm) - 3" (76mm)	707F60 x FIN
3" (76mm) - 4" (102mm)	706F70 x FIN



Key Plate

Cast brass or bronze. Standard for privacy function with emergency release only. Sectional Trim.
Plate Size: 1-3/8" (35mm) diameter. To order separately, specify Packet 438F90 x Finish.

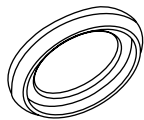


Hotel Occupancy Indicators

For use with ML2029 hotel locks. Furnished only when ordered. When door is locked from inside, push button cannot be depressed, indicating that the room is occupied. To order specify quick code M19. For use with sectional trim designs having 2-7/8" (73mm) maximum rose diameter. Cylinder collar and indicator combined.

Size: 3-1/16" (78mm) x 1-3/4" (44mm). To order separately, see table. For use with escutcheon designs only. Indicator is fastened to escutcheon at factory. It is included for illustration purposes only and is not sold separately.

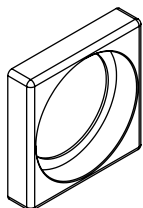
Collar and Indicator Assembly	
Door	Packet
1-3/8" (35mm)	429F08 x FIN
1-3/4" (44mm)	416F84 x FIN
2-1/4" (57mm)	484F74 x FIN



Tapered Cylinder Collar

Furnished only for CSV or NSV trims with 1-1/4" cylinders, double cylinder functions or with 1-1/2" cylinders, single cylinder functions.*

*1-3/4" thick doors. Only used with VR trims.



Square Cylinder Collar

Included when ordering Muséo® E2, E3 and E4 square/rectangular roses. Used on all cylinder functions.

Size: 1-5/8" (41mm) square
Contact TPS to determine correct collar size.