

Keyways

Z and DH Class Keyways

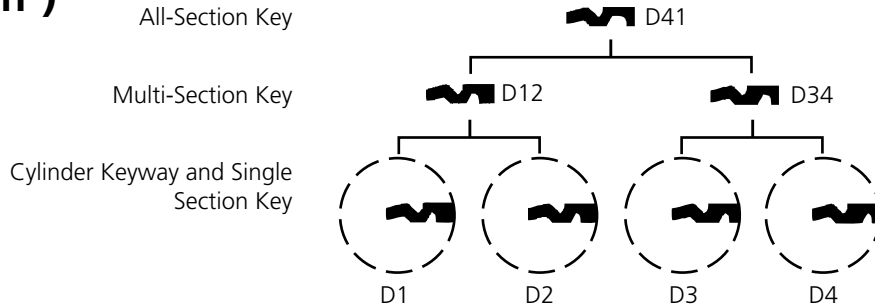
Key Systems

D Series (Russwin®)

4 keyway multiplex system.
Available 5-, 6- and 7-pin.
DH Class bitting.
Reverse of L Series.



Available

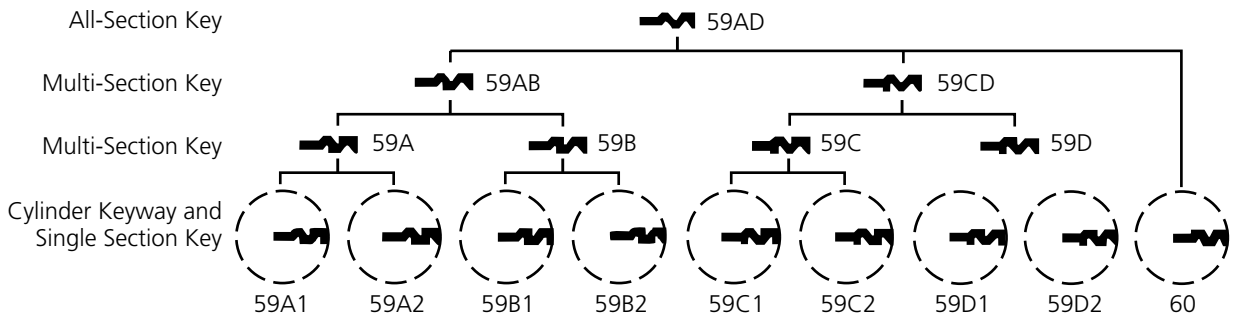


59 Series (Corbin®)

9 keyway multiplex system.
Available 5-, 6- and 7-pin.
Z Class bitting.



Available

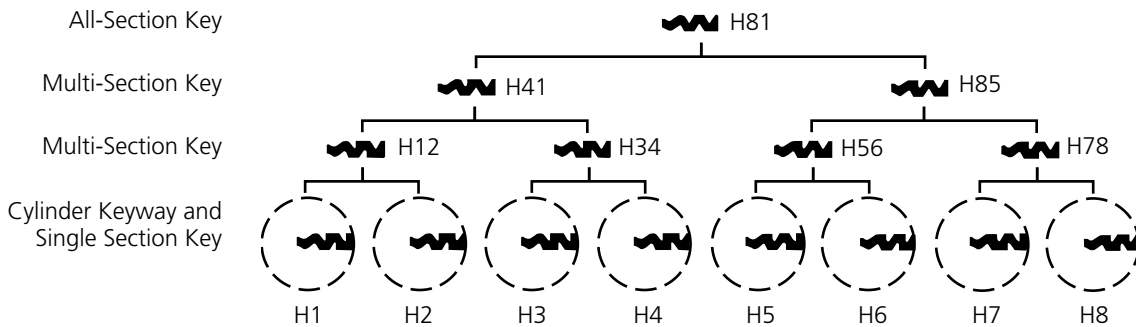


H Series (Russwin)

8 keyway multiplex system.
Available 5-, 6- and 7-pin.
DH Class bitting.



Available

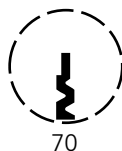


70 Series (Corbin)

Simplex Keyway.
Z Class bitting.
Reverse of 60.



Available

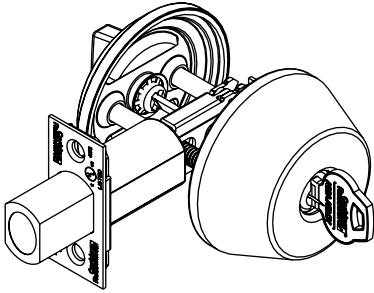


70

Deadlocks DL2200/DL3200 Series

Padlocks & Deadlocks

Features



Handing Non-handed.

Door Thickness Standard: 1-3/4" (44mm). Optional door thicknesses available; see Quick Codes.

Backset Standard: 2-3/4" (70mm)
Optional: 2-3/8" (60mm)

Front Standard: brass or stainless steel, 2-1/4" (57mm) x 1-1/8" (29mm).
Optional: 1" width; see Quick Codes.

Deadbolt 1" throw, solid steel deadbolt with hardened, free spinning, steel pin insert.

Strike Standard; 2-3/4" (70mm) x 1-1/8" (29mm). Optional strikes and wrought boxes available; see Strikes, this page.

Cylinder Standard: brass, 6-pin, L4 keyway, 0-bitted. Security cylinder optional; see Quick Codes.

Keys Two nickel silver standard.

Keying Features Available

Master keying
Construction master keying
Security
Visual key control
Concealed key control

Warranty One-year limited.

Certification/Compliance

UL

UL10B/UL10C Fire Rated Auxiliary Lock for A label and lesser class doors when used with a correspondingly rated primary latching device.

ANSI

DL2200 - 156.5 Grade 2
DL3200 - 156.5 Grade 1

Any retrofit or other field modification to a fire rated opening can potentially impact the fire rating of the opening, and Corbin Russwin, Inc. makes no representations or warranties concerning what such impact may be in any specific situation. When retrofitting any portion of an existing fire-rated opening, or specifying and installing a new fire-rated opening, please consult with a code specialist or local code official (Authority Having Jurisdiction) to ensure compliance with all applicable codes and ratings.

Functions

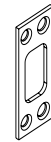
Outside	Inside	Series/ Function	Type	ANSI No.	Function Description
		DL2213 DL3213	Single Cylinder	E0150 Series	- By key outside and by thumbturn inside.
		DL2212 DL3212	Double Cylinder	E0140 Series	- By key either side.
		DL2217 DL3217	Classroom	E0170 Series	- By key outside and by thumbturn inside. - Thumbturn will retract but not project deadbolt.
		DL2211 DL3211	Cylinder x Blank	E0160 Series	- By key one side only; opposite side blank.
		DL2260 DL3260	Thumbturn x Blank	E0190 Series	- By thumbturn one side only; opposite side blank.

Strikes



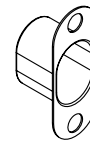
Metal Frame Strike

Standard
2-3/4" (70mm) x 1-1/8" (29mm).
To order separately, specify 781F568 x Finish



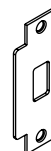
Wood Frame Strike

Standard
2-3/4" (70mm) x 1-1/8" (29mm).
To order separately, specify 781F558 x Finish.



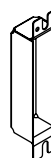
Strike Box

Standard with standard strikes.
To order separately, specify 781F599.



ANSI Strike

Optional; see Quick Codes.
To order separately, specify 423L71 x Finish.



ANSI Wrought Strike Box

Optional for use with ANSI strike; see Quick Codes. To order separately, specify 120F768.

Deadlocks DL2200/DL3200 Series

Padlocks & Deadlocks

Ordering Examples

Stock Order

Quantity	Series/Function	Finish
24	DL2213	626

Contract / Detailed Order

Quantity	Keypad	Series/Function	Finish	Strike	Options
24	AA1	DL2213	626	SS078	HS-CKC2

Cylinders

Cylinder Only (less housing)

Function	Part Number	Cylinder Type	Door Thickness
11,13,17	4400-134-A51	6-Pin Conventional	1-3/8" (35mm) 1-3/4" (44mm) 2" (51mm) 2-1/4" (57mm)
	4400-134-A51-7	7-Pin Conventional	
	4410-134-A51	Security	
	4420-134-A51	Pyramid High Security	
	4427-134-A51	Pyramid Security	
	4500-134-A51	Access 3® Patented	
	4600-134-A51	Access 3® Security	
	4700-134-A51	Access 3® High Security	
12	4400-134-A52	6-Pin Conventional	1-3/8" (35mm) 1-3/4" (44mm) 2" (51mm) 2-1/4" (57mm)
	4400-134-A52-7	7-Pin Conventional	
	4410-134-A52	Security	
	4420-134-A52	Pyramid High Security	
	4427-134-A52	Pyramid Security	
	4500-134-A52	Access 3® Patented (AP)	
	4600-134-A52	Access 3® Security (AS)	
	4700-134-A52	Access 3® High Security (AHS)	
	4400-214-A52	6-Pin Conventional	
	4400-214-A52-7	7-Pin Conventional	
	4410-214-A52	Security	
	4420-214-A52	Pyramid High Security	
	4427-214-A52	Pyramid Security	
	4500-214-A52	Access 3® Patented (AP)	
4600-214-A52	Access 3® Security (AS)		
4700-214-A52	Access 3 High Security (AHS)		
11,12,13,17	8000	6-Pin IC	See the Housing Assembly for Interchangeable Core Cylinder chart below.
	8000-7	7-Pin IC	
	8010	Security IC	
	8020	Pyramid High Security IC	
	8027	Pyramid Security IC	
	8500	Access 3® Patented IC	
	8600	Access 3® Security IC	
	8500	Access 3® High Security IC	

Cylinder and Keying

Description	Specify
Conventional 6-pin	(standard)
Less cylinder(s)	LC
Conventional 7-pin	7P
Interchangeable core (IC) 6-pin	C6
IC 6-pin less core	CL6
SFIC 6-pin with Less Core	CLS6
IC 6-pin with temporary construction core	CT6
IC 7-pin	C7
IC 7-pin less core	CL7
SFIC 7-pin with Less Core	CLS7
IC 7-pin C7	C7
IC 7-pin with temporary construction core	
Red	CT7R
Blue	CT7B
Green	CT7G
IC 7-pin less core	CL7
Security	HS
Security IC	CHS
Pyramid High Security Fixed Core	PHS
Pyramid High Security IC	PCHS
Pyramid Security Fixed Core	PS
Pyramid Security IC	PCS
Access 3® Patented Fixed Core	AP
Access 3® Security Fixed Core	AS
Access 3® High Security Fixed Core	AHS
Access 3® Patented IC	ACP
Access 3® Security IC	ACS
Access 3® High Security IC	ACHS
0-bitted with 2 blank keys	(standard)
Keyed random	KR
Construction Master Keyed (not available for Pyramid & Security cylinders)	CMK
Visual key control (VKC)	
- Keys only	VKC1
- Cylinders and keys (not available with HS or CHS)	VKC2
- Cylinders only (not available with HS or CHS)	VKC3
Concealed key control (CKC)	
- CKC cylinders and VKC keys	CKC2
- CKC cylinders only	CKC3
2 keys per lock	(standard)
More than 2 keys (e.g., KY6)	KY#

Housing Assembly - Interchangeable Core Cylinder

Function	Part Number	Accepts Core	Door Thickness
11,13,17	4440-134-A51	6 & 7 Pin SFIC	1-3/8" (35mm) 1-3/4" (44mm) 2" (51mm) 2-1/4" (57mm)
	4470-134-A51	6-Pin LFIC	
	4470-134-A51-7	7-Pin LFIC	
12	4440-138-A52-XX (*)	6 & 7 Pin SFIC	1-3/8" (35mm)
	4470-138-A52-XX	6-Pin LFIC	
	4470-138-A52-7-XX	7-Pin LFIC	
	4440-134-A52-XX	6 & 7 Pin SFIC	1-3/4" (44mm)
	4470-134-A52-XX	6-Pin LFIC	
	4470-134-A52-7-XX	7-Pin LFIC	
	4440-200-A52-XX	6 & 7 Pin SFIC	2" (51mm)
	4470-200-A52-XX	6-Pin LFIC	
	4470-200-A52-7-XX	7-Pin LFIC	
	4440-214-A52-XX	6 & 7 Pin SFIC	2-1/4" (57mm)
	4470-214-A52-XX	6-Pin LFIC	
	4470-214-A52-7-XX	7-Pin LFIC	

(*) Specify "OS" for outside of door or "IS" for inside of door.

Deadlocks DL2200/DL3200 Series

Padlocks & Deadlocks

Quick Codes

Finish

	Description	Specify
US3	Bright Brass	605
US4	Satin Brass	606
US10	Satin Bronze	612
US10B	Dark Oxidized Satin Bronze, oil rubbed	613
US10BE	Dark Oxidized Satin Bronze - equivalent	613E
US26	Bright Chromium Plated	625
US26D	Satin Chromium Plated	626

Door Thickness

Description	Specify
1-3/8" (35mm)	D138
1-3/4" (44mm)	(standard)
2" (51mm)	D200
2-1/4" (57mm)	D214

Strike

Lip to Center	ANSI Straight Lip Specify
7/8" (22mm)	SS078
1-1/8" (29mm)	SS118
1-1/4" (32mm)	SS114
1-3/8" (35mm)	SS138
1-1/2" (38mm)	SS112
1-3/4" (44mm)	SS134
2" (51mm)	SS200
2-1/4" (57mm)	SS214
2-1/2" (64mm)	SS212
2-3/4" (70mm)	SS234
3" (76mm)	SS300

Miscellaneous Options

Description	Specify
ANSI wrought strike box	M17
Plastic box for standard strike	(standard)

Bolt Assembly

Description	Part No.	Specify
2-3/8" (60mm) Backset	781F528	B238
2-3/4" (70mm) Backset	781F538	(standard)

Front Trim Plates

1" (25mm) Wide	781F50M x Finish	M14
1-1/8" (29mm) Wide	781F51M x Finish	(standard)