

NEW!

Introducing **150 SERIES** **CompXeLock** for **Refrigerators**

Revolutionizing Electronic Access Control



Vertical version shown. Horizontal left and right hand versions also available.

Network units also available.
Visit compxelock.com for all eLock solutions.

150 series eLock®

Keyless, non-network, electronic access control solution for refrigerators, freezers and other appliances.

all versions feature:

- ♦ Audit trail of last **1,500 access attempts** with date, time and user name
- ♦ 250 user/supervisor codes
- ♦ Three modes of access: **Keypad, Proximity card* HID or iCLASS HID** *Use existing identification cards
- ♦ Motor driven **latching mechanism**
- ♦ 6-AA battery pack; premium brand Alkaline batteries recommended (not included)
- ♦ Low battery indicator
- ♦ Jump start **battery override** available through mini USB communications port allows the user, with a valid credential, to access the CompXeLock® when the batteries are exhausted
- ♦ Mini USB communications port for audit trail download with **optional** LockView 5 software



Horizontal right hand version

CompX
SECURITY PRODUCTS

Reorder #: F2644-036

Copyright 2017 © CompX Security Products / 847.752.2500 / compx.com / 715 Center St., Grayslake, IL 60030
Any companies and/or products referred to herein are marks or registered trademarks of their respective companies, owners and/or mark holders.

For more information, call **847.752.2500**

LockView SOFTWARE

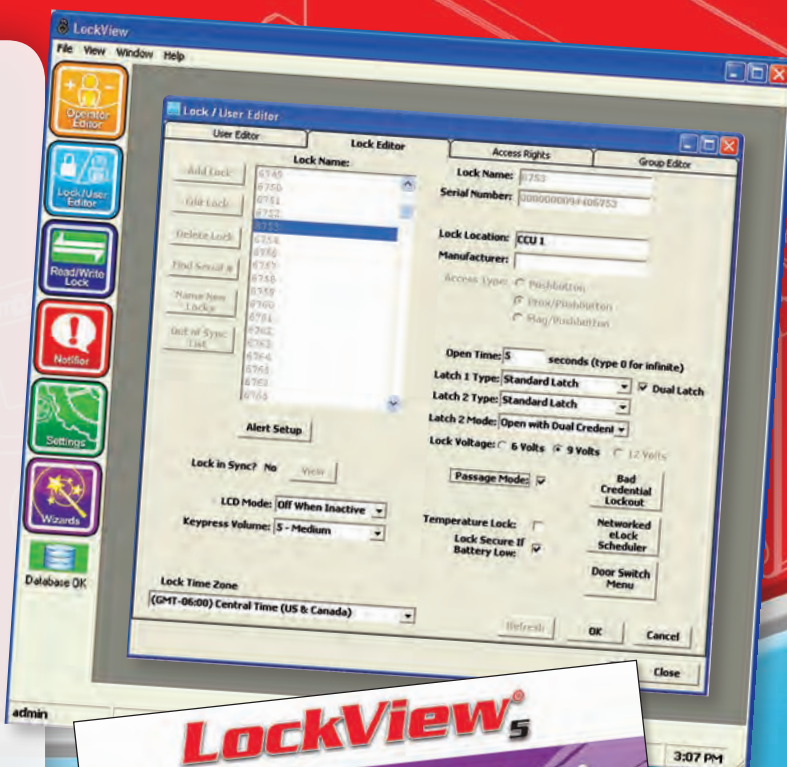
LockView® 5 software

LockView® makes it easy to monitor audit trails for the last 1,500 access attempts, manage users and eLocks, and assign time-based restrictions and dual credential access. Downloading and uploading information is simple. Attach mini USB to communications port on eLock and standard USB to laptop.

- ◆ Provides a comprehensive audit trail of the last 1,500 access attempts; including date, time and user name
- ◆ Complies with Joint Commission standards and is 21 CFR Part 11 compliant
- ◆ When connected, LockView sends updates to the eLock. Updates can include:
 - User changes (Add / Delete / Modify Credentials)
 - eLock Changes (Add / Delete / Modify eLocks)
 - Access Rights changes
- ◆ LockView 5 works with all 150 and 200 series eLock models (software sold separately)

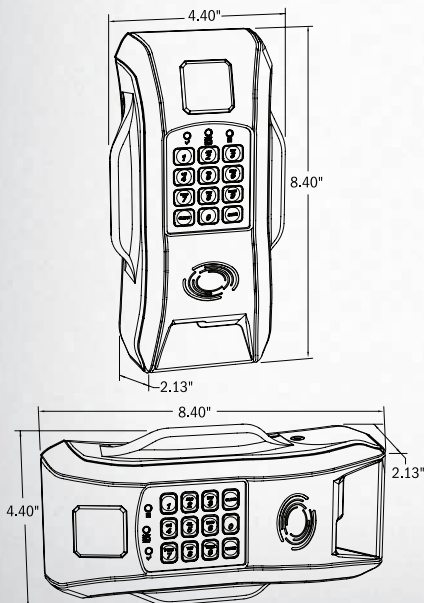
Minimum System Requirements

2GB RAM, 2GB free space on hard drive, 64bit Compatible, OS: Windows XP, Vista, 7. Pentium III 1.0 GHz or higher. Other configurations are acceptable; please consult factory for detailed information.



Controller

Part numbers



150-KP-FRG-V	Keypad only, refrigerator vertical version
150-PRKP-FRG-V	Proximity reader (HID 125 kHz) with Keypad, vertical refrigerator version
150-ICKP-FRG-V	iCLASS Proximity reader (HID 13.56 MHz) with Keypad, vertical refrigerator version
150-KP-FRG-R*	Keypad only, refrigerator right hand version
150-PRKP-FRG-R*	Proximity reader (HID 125 kHz) with Keypad, right hand refrigerator version
150-ICKP-FRG-R*	iCLASS Proximity reader (HID 13.56 MHz) with Keypad, right hand refrigerator version
150-KP-FRG-L*	Keypad only, refrigerator left hand version
150-PRKP-FRG-L*	Proximity reader (HID 125 kHz) with Keypad, left hand refrigerator version
150-ICKP-FRG-L*	iCLASS Proximity reader (HID 13.56 MHz) with Keypad, left hand refrigerator version

* Location of door hinges determines hand of door when facing door; i.e. if hinges are on the right, order right hand mount. eLock unit will be installed on opposite side of hinges.

NOTE: on vertical units (shown, to the left), the strike plate is mounted on the top of the refrigerator. On handed (horizontal) units, the strike plate is mounted on the side.

CompX
SECURITY PRODUCTS



For more information, call **847.752.2500**

Reorder #: F2644-036

Copyright 2017 © CompX Security Products / 847.752.2500 / compx.com / 715 Center St., Grayslake, IL 60030
Any companies and/or products referred to herein are marks or registered trademarks of their respective companies, owners and/or mark holders.