

**PATENT INDEMNITY**

We agree to defend any suit or proceeding brought against our customers so far as based on a claim that any of our products, or any part thereof, made solely to our specifications and furnished to our customer constitute an infringement of any U.S. Patent, if notified in writing and given authority, information and assistance at our expense for the defense of same, and we shall pay all damages and costs awarded therein against our customer. In case our products, or any part thereof, are in such suit to constitute infringement and their use as enjoined, we will at our expense and discretion, either procure for our customer the right to continue using the products or replace the same with non-infringing products, or modify them so they become non-infringing, or remove such products and refund the purchase price (less depreciation, prorated from the purchase date). The foregoing states our entire liability for patent infringement by our products or any part thereof.

**LIMITED WARRANTY**

We warrant our products against defects in workmanship, material or operation subject, of course, to ordinary wear and tear as it pertains to particular installations. However, we do not warrant against defects due to improper installation or failure to exercise normal maintenance, nor against the consequences of uses for which our products were not designed. Our only liability whether in tort, or in contract under this warranty or any express or implied warranty, is to repair or replace products which are returned to us, shipping charges prepaid, at the address below within one year after or delivery thereof to the original purchaser from us, and are determined by us to be defective. We expect that our customer will inspect these products upon receipt. If damage has resulted from shipment, or customer's only remedy is by claim against the carrier. Products will not be accepted for repair or replacement under this warranty unless we have given prior authorization for their return. Upon receipt of products returned for repair or replacement we will determine whether products qualify for repair or replacement under this warranty; if they do not, we will notify our customer of estimated costs of repair or replacement involved and will obtain authorization prior to proceeding. We have no liability to pay any costs of repairs performed by anyone other than us, unless in each instance we have given prior written approval of such repair in which case we will pay what we consider to be the reasonable cost thereof. CCL will warrant that at the time of delivery, its products will be free from defects in material and workmanship, and shall be liable only to the extent of replacement of locks. This warranty will NOT include labor or installation.

**THIS WARRANTY IS EXPRESSLY IN LIEU OF ALL OTHER WARRANTIES. IMPLIED WARRANTIES SHALL BE LIMITED TO THE DURATION OF THE WARRANTY PERIOD OF THIS EXPRESS WARRANTY. WE SHALL UNDER NO CIRCUMSTANCES BE LIABLE FOR INCIDENTAL OR CONSEQUENTIAL DAMAGES. SOME STATES DO NOT ALLOW LIMITATIONS ON HOW LONG AN IMPLIED WARRANTY LASTS OR THE EXCLUSION OR LIMITATIONS OF INCIDENTAL OR CONSEQUENTIAL DAMAGES SO THE ABOVE LIMITATIONS OF EXCLUSIONS MAY NOT APPLY TO YOU.**

**THIS WARRANTY GIVES YOU SPECIFIC LEGAL RIGHTS AND YOU MAY ALSO HAVE OTHER RIGHTS, WHICH VARY FROM STATE TO STATE.**

**FREIGHT POLICY**

All goods are invoiced F.O.B. shipping point. When delivered to the transportation company, shipments become the property of the purchaser who assumes the risk of loss or damage in transit.

**COMPANY POLICY**

No CCL product or part can be returned for credit unless written or verbal authorization has been given in advance. Merchandise returned must be identified as to original date of purchase, purchase order number, and shipper's name and address. Service and handling charge is 25% of net billing price, except in case of defective parts. Merchandise returned in unsalable condition will not be acceptable. The return of obsolete, discontinued, modified, or special parts is not permissible. CCL reserves the right to charge for all work completed or materials purchased when an order is cancelled or reduced prior to shipment, where special or modified parts are involved. CCL reserves the right to assess an additional cancellation charge, other than the normal 25% handling charge, in the event the quantity cancelled is in excess of our normal stock requirements. Prices are subject to change in the event the purchaser receives original order quantity.

**CLAIMS:**

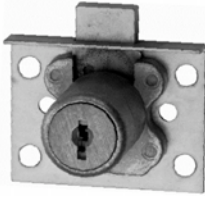
CCL will not be responsible for goods lost in transit. Purchaser is solely responsible for filing claims with the carrier for losses. Claims for shortages in shipment not chargeable to the carrier must be reported within ten (10) days from receipt of merchandise.

**FINISHING SYMBOLS**

US3	Bright Brass		US26D	Satin Chrome Plated
US4	Satin Brass		US2G	Zinc Plated
US10	Satin Bronze		PS	Plain Steel
US14	Bright Nickel		PSS	Plain Stainless Steel
US26	Bright Chrome Plated			



# DRAWER LOCKS • Disc Tumbler



**No. 02065  
Dead Bolt**

## 02065 & 02065 1/2 DRAWER LOCKS

Disc Tumbler  
7/8" Can be Masterkeyed,  
1 1/8" Cannot be Masterkeyed\*

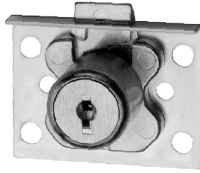
**Material:** Brass Plated Steel  
Backplate, Cylinder and Bolt,  
Pressure Cast  
**Strike:** No. **26S**, brass, US4 only.  
Regularly furnished with locks  
**02068 1/2** and **02065 1/2**.

**Strike:** No. **7S**, brass, US4 only.  
Furnished only when ordered with locks  
**02068** and **02065**.

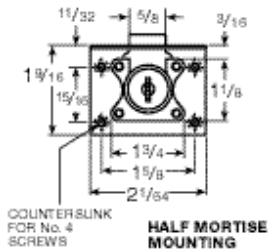
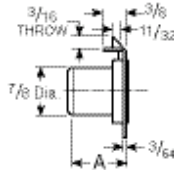
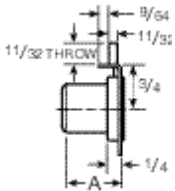
**Rekeying:**



Plug removal hole added to allow for removal of plug assembly for rekeying purposes. To remove plug, insert key and rotate 90 degrees. Insert end of small tool (e.g., paper clip) into access hole and depress retainer while pulling key and plug out.



**No. 02065 1/2  
Latch Bolt**



For Thickness of Material (A)		Regular Key Changes	Key Blank No.
Regular	Also Available		
7/8"	1 1/8"	200	5865JVR (5 Disc)
	1 1/8"	700	8658JVR (6 Disc)

Part No/Cyl Length	Stock ID No	MKYD	US4	US26D	Stock Qty.	Approx. Boxed Wt. (lbs./ oz.)
02065 7/8" KD	00152		•		25	5/14
02065 7/8" KA - CAT30	02673		•		25	5/14
02065 7/8" AUE 1	00153		•		25	5/14
02065 7/8" KA - CAT30	02674			•	25	5/14
02065 1 1/8" KD	02675		•		25	6/8
K02065 7/8" Drawer Lock, KD, Carded 7/8" Length	00151		•		8	6/8
02065 7/8"		•	•	•		
02065 1 1/8"		*	•			
02065 1/2" - 7/8" KD	00155		•		25	6/0
02065 1/2" - 7/8" KA - CAT30	02677		•		25	6/0
02065 1/2" - 7/8" AUE 1	02678		•		25	6/0
02065 1/2" - 7/8" KA - CAT30	02679			•	25	6/0
02065 1/2" - 7/8"		•	•	•		
02065 1/2" - 1 1/8"		*	•			

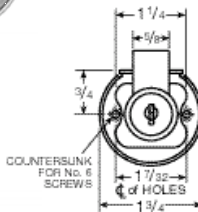


**No. 02068  
Dead Bolt**

## 02068 & 02068 1/2 DRAWER LOCKS

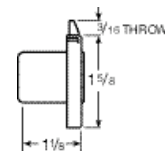
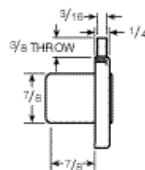
Disc Tumbler  
Cannot be Masterkeyed\*

Refer to Top of Page for Strikes and Rekeying Information



**No. 02068 1/2  
Latch Bolt**

Part No/Cyl Length	Stock ID No	MKYD	US4	US26D	Stock Qty.	Approx. Boxed Wt. (lbs./ oz.)
02068 7/8" KD	00180		•		25	6/13
02068 7/8" KA - CAT30	02686		•		25	6/13
02068 7/8", 1 1/8"		*	•			
02068 1/2 - 7/8" KD	02691		•		25	6/13
02068 1/2 - 7/8" KA - CAT30	02692		•		25	6/13
02068 1/2 - 7/8"		*	•	•		



**SURFACE MOUNTING**

**RECESSED MOUNTING**