

ClearLink® High-Band Donor Panel Antenna

Indoor/Outdoor



Model Number

- CS03-725-999

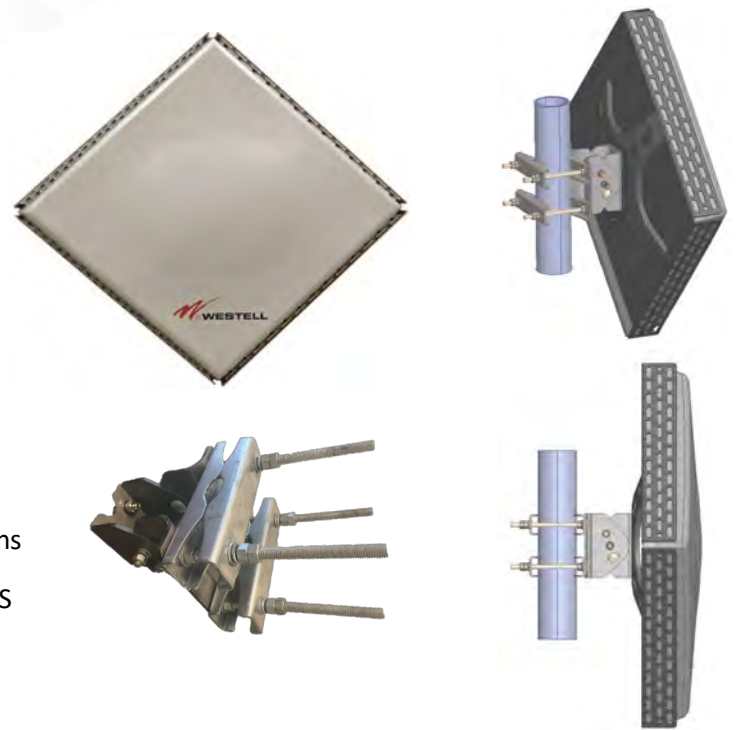
Includes Antenna and Mounting Bracket

Frequency Range

- 1710—2690 MHz

Applications

- Ideal for high-isolation outdoor donor site applications
- Supports 1900 PCS, 2100 AWS, 2300 WCS & 2600 BRS
- WCDMA/HSPA and LTE applications



ELECTRICAL SPECIFICATIONS

Frequency Range [MHz]	1710—1880	1850—1995	1920-2170	2300-2500	2500-2690
Gain, average [dBi]	18.5	20.0	21.0	23.4	23.0
Gain, Over All Tilts [dBi]	18.5±1.0	20.0±1.0	21.0±1.0	23.4±1.0	23.0±1.0
Azimuth Beamwidth [°]	17.0±0.5	15.5±0.5	14.7±0.7	13.2±0.3	11.5±0.5
Elevation Beamwidth [°]	16.0±0.5	14.7±0.7	13.7±0.7	12.0±0.5	10.7±0.5
Electrical Downtilt [°]			0°		
Elevation Downtilt Deviation [°]	1.6	1.5	1.4	1.3	1.2
Front-to-Back Ratio [dB]	40	42	42	38	36
Cross Polar Discrimination Over Sector [dB]	N/A	N/A	N/A	N/A	N/A
Cross Polar Discrimination Over					
3dB Azimuth Beamwidth [dB]	30	30	25	20	20
Upper Side Lobe Suppression [dB]	25	25	25	19	18
Azimuth Side Lobe Suppression [dB]	22	22	22	23	21
Polarization [°]			Vertical		
Impedance [Ω]			50		
VSWR			< 1.5:1		
Return Loss [dB]			< -14.0		
Passive Intermodulation [dBc]			< -153		
Maximum Effective Power [W]			150		



ClearLink® High-Band Donor Panel Antenna

Indoor/Outdoor



MECHANICAL SPECIFICATIONS

Antenna Dimensions: L x W x H [mm]	600 x 600 x 114 (23.6" x 23.6" x 4.5")
Packing Size: L x W x H [mm]	750 x 750 x 200 (29.5" x 29.5" x 8")
Net Weight (antenna) [kg]	5.9 (13.0 lb)
Net Weight (mount) [kg]	5.5 (12.0 lb)
Connector Type	4.3/10 long neck
Connector Quantity	1
Connector Position	Rear-(Bottom Left)
Windload, Calculation [km/h]	150 (93.2 mph)
Windload, Maximum [N]	445 (100 lbf)
Windload, Frontal [N]	398 (89 lbf)
Windload, Lateral [N]	18 (4 lbf)
Survival Wind Speed [km/h]	273 (170 mph)
Radome Material	FiberGlass
Radome Color [RAL]	Light gray
Product Environmental Compliance	RoHS
Mounting Bracket Elevation Tilt Range	+/- 15deg
Mounting Bracket Location	Center

