

ClearLink® Low-Band Donor Panel Antenna

Indoor/Outdoor



Model Number

- CS03-724-999

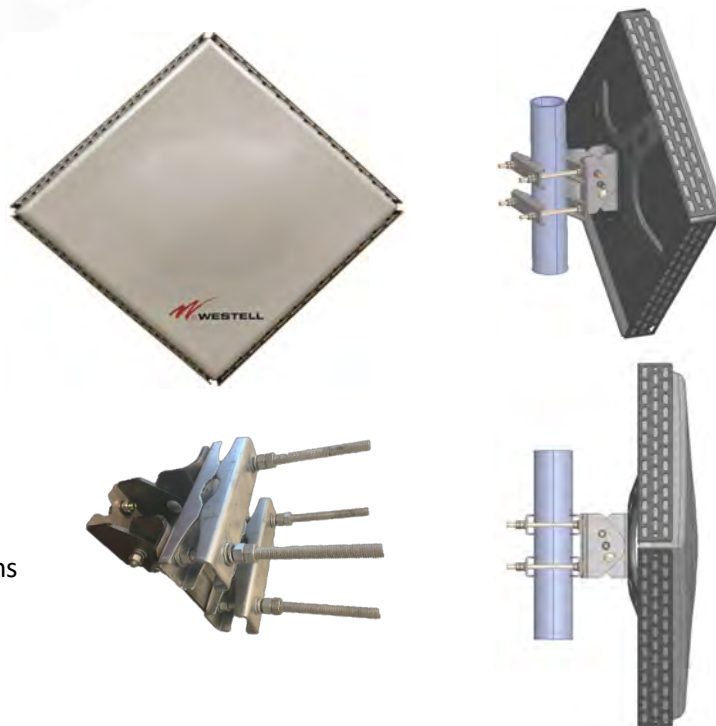
Includes Antenna and Mounting Bracket

Frequency Range

- 698-940 MHz

Applications

- Public Safety, 3G - 4G DAS systems
- Ideal for high-isolation outdoor donor site applications
- Supports 700 LTE, 700PS, 800SMR, 800PS & 850
- WCDMA/HSPA and LTE applications



ELECTRICAL SPECIFICATIONS

	698-793	792-862	806-940
Frequency Range [MHz]			
Gain, average [dBi]	14.8	15.5	16.0
Gain, Over All Tilts [dBi]	14.8±0.5	15.5±0.5	16.0±0.5
Azimuth Beamwidth [°]	30.0±3.0	28.0±3.0	26.0±3.0
Elevation Beamwidth [°]	30.0±3.0	28.0±3.0	26.0±3.0
Electrical Downtilt [°]		0°	
Elevation Downtilt Deviation [°]	1.5	1.5	1.5
Front-to-Back Ratio [dB]	38	37	36
Cross Polar Discrimination Over Sector [dB]	N/A	N/A	N/A
Cross Polar Discrimination Over			
3dB Azimuth Beamwidth [dB]	20	20	20
First Upper Side Lobe Suppression [dB]	25	25	25
Upper Side Lobe Suppression [dB]	25	25	25
Azimuth Side Lobe Suppression [dB]	22	22	22
Polarization [°]		Vertical	
Impedance [Ω]		50	
VSWR		< 1.4:1	
Return Loss [dB]		< -15.5	
Passive Intermodulation [dBc]		< -153	
Maximum Effective Power [W]		150	

ClearLink® High-Band Donor Panel Antenna

Indoor/Outdoor



MECHANICAL SPECIFICATIONS

Antenna Dimensions: L x W x H [mm]	700 x 700 x 150 (27.5" x 27.5" x 6.5")
Packing Size: L x W x H [mm]	800 x 800 x 200 (31.5" x 31.5" x 8")
Net Weight (antenna) [kg]	8.0 (17.5 lb)
Net Weight (mount) [kg]	5.5 (12.0 lb)
Connector Type	4.3/10 long neck
Connector Quantity	1
Connector Position	Rear-(Bottom Left)
Windload, Calculation [km/h]	150 (93.2 mph)
Windload, Maximum [N]	608 (137 lbf)
Windload, Frontal [N]	552 (124 lbf)
Windload, Lateral [N]	66 (15 lbf)
Survival Wind Speed [km/h]	273 (170 mph)
Radome Material	FiberGlass
Radome Color [RAL]	Light gray
Product Environmental Compliance	RoHS
Mounting Bracket Elevation Tilt Range	+/- 15deg
Mounting Bracket Location	Center

