

# ACCESSORIES

## B-Connector (DRY FILLED w/WHITE SLEEVE) (SILICONE FILLED w/BLUE SLEEVE)

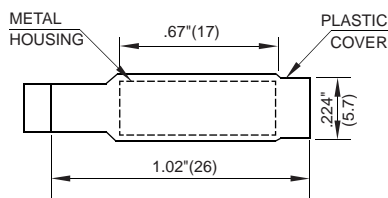


### MATERIALS:

Outer Shell: Plastic Heat Shrink Tubing

Metal Housing: Brass

Inner Sleeve: Beryllium Copper plated with Bright Nickel



Contact Resistance: 10 Milli Ohms Initial

Dielectric: 1000 V

Strength of Joint: 9 lbs

## TANE WS-1 (Water Sensor with Leads)



**Color:** White

**Size:** 2 1/2" L x 1/2" W x 1/2" H

**P/N TANE WS-1 WH Packed 5**

Early water damage warning w/6' foot jacketed leads

Longer Leads available, 12V Operating @10 ma

Output 9V DC minimum

The WS-1 is a low cost reliable water sensor that works on 12VDC alarm panels, on a 24 hr zone, open loop circuit.

The wiring works similar to a two wire smoke detector. You have a red + and black - wire inside the cable jacket. The sensor draws a very small current from the alarm panel's 24 hr open loop circuit. When the terminals get wet the internal transistor flip flops and locks down to close the circuit, causing the alarm panel to send an alarm.

**Note:** If the Panel uses an EOL resistor, then 6VDC is the minimum requirement.

**Note:** Not compatible with wireless transmitters.

**Always test system for compatibility.**

## TANE BOX WSPR66A · 20 Watt Stainless Steel Box with Dual Tampers and Dual Tone Siren



AVAILABLE SPECIAL  
ORDER ONLY

### Specifications:

- |   |  |
|---|--|
| <ul style="list-style-type: none"> <li>• <b>Housing Material:</b><br/>Stainless Steel with Dual Reed Tampers</li> <li>• <b>Speaker Type:</b><br/>Voice coil impedance-8 ohm</li> <li>• <b>Rated Input Voltage:</b> 12 VDC</li> <li>• <b>Range Voltage:</b> 6-15VDC</li> <li>• <b>Sound Level:</b> 115db/m</li> <li>• <b>Current Draw:</b><br/>280mA @ 12VDC 8 ohm load</li> </ul> | <ul style="list-style-type: none"> <li>• <b>Tone Frequency:</b><br/>Steady-1200HZ<br/>Warble-800HZ to 1200HZ<br/>1 second ramp cycle</li> <li>• <b>Operating Temp:</b> -20°C to 60°C</li> <li>• <b>Dimensions:</b><br/>5.67"Hx5.63"Wx4"D<br/>(144mmx143mmx100mm)</li> <li>• <b>Color:</b> Stainless Steel</li> </ul> |
|---|--|

The TANE BOX WSPR66A Stainless-Steel Siren, can be fitted with a TANE LED STROBE (sold separately), to provide visual as well as acoustic warnings and alerts.

